



ELECTRONIC COPY

LABORATORY GROWN DIAMOND REPORT

May 15, 2024	
IGI Report Number	LG634478599
Description	LABORATORY GROWN DIAMOND
Shape and Cutting Style	CUSHION BRILLIANT
Measurements	8.77 X 6.74 X 4.56 MM

GRADING RESULTS

Carat Weight	2.07 CARATS
Color Grade	E
Clarity Grade	VS 2

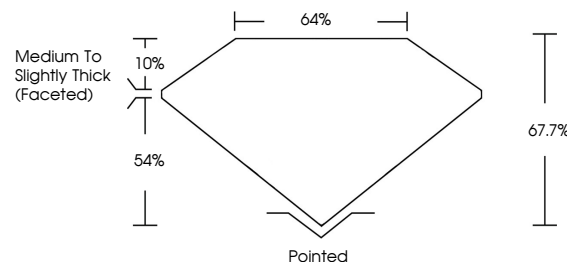
ADDITIONAL GRADING INFORMATION

Polish	EXCELLENT
Symmetry	EXCELLENT
Fluorescence	NONE
Inscription(s)	15 LG634478599

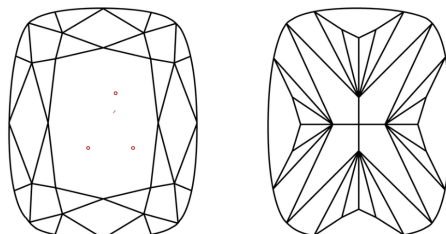
Comments: This Laboratory Grown Diamond was created by Chemical Vapor Deposition (CVD) growth process and may include post-growth treatment.
Type IIa

LG634478599
Report verification at lgi.org

PROPORTIONS

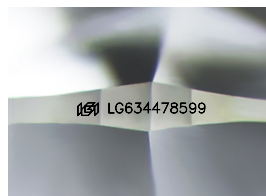


CLARITY CHARACTERISTICS



KEY TO SYMBOLS

Red symbols indicate internal characteristics.
Green symbols indicate external characteristics.



Sample Image Used

COLOR

D E F G H I J Faint Very Light Light

CLARITY

IF	VVS ¹⁻²	VS ¹⁻²	SI ¹⁻²	I ¹⁻³
Internally Flawless	Very Very Slightly Included	Very Slightly Included	Slightly Included	Included



© IGI 2020, International Gemological Institute

FD - 10 20

www.igi.org

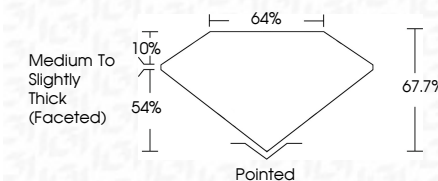
DIAMOND REPORT



May 15, 2024	
IGI Report Number	LG634478599
Description	LABORATORY GROWN DIAMOND
Shape and Cutting Style	CUSHION BRILLIANT
Measurements	8.77 X 6.74 X 4.56 MM

GRADING RESULTS

Carat Weight	2.07 CARATS
Color Grade	E
Clarity Grade	VS 2



ADDITIONAL GRADING INFORMATION

Polish	EXCELLENT
Symmetry	EXCELLENT
Fluorescence	NONE
Inscription(s)	 LG634478599

Comments: This Laboratory Grown Diamond was created by Chemical Vapor Deposition (CVD) growth process and may include post-growth treatment.
Type IIa



May 15, 2024
IGI Report No LG634478599
CUSHION BRILLIANT

8.77 X 6.74 X 4.56 MM Carat Weight Color Grade Clarity Grade	2.07 CARATS		VS 2 67.7% 64% Medium To Slightly Thick (Faceted)	Pointed EXCELLENT EXCELLENT NONE 4mm L G454178520		
	E					
	VS 2					
	67.7%					
	64%					
8.77 X 6.74 X 4.56 MM Carat Weight Color Grade Clarity Grade	2.07 CARATS		VS 2 67.7% 64% Medium To Slightly Thick (Faceted)	Pointed EXCELLENT EXCELLENT NONE 4mm L G454178520		
	E					
	VS 2					
	67.7%					
	64%					

Comments:
This Laboratory Grown Diamond was created by Chemical Vapor Deposition (CVD) growth process and may include post-growth treatment.