

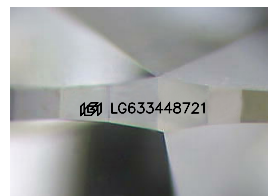
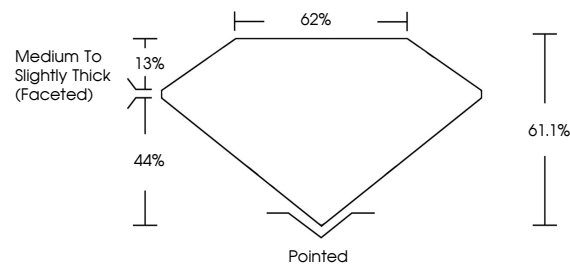


ELECTRONIC COPY

LABORATORY GROWN DIAMOND REPORT

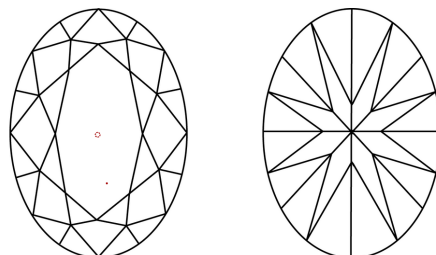
LG633448721
Report verification at [igi.org](https://www.igi.org)

PROPORTIONS



Sample Image Used

CLARITY CHARACTERISTICS



KEY TO SYMBOLS

Red symbols indicate internal characteristics.
Green symbols indicate external characteristics.

COLOR

D E F G H I J Faint Very Light Light

CLARITY

IF	VVS ¹⁻²	VS ¹⁻²	SI ¹⁻²	I ¹⁻³
Internally Flawless	Very Very Slightly Included	Very Slightly Included	Slightly Included	Included



© IGI 2020, International Gemological Institute

FD - 10 20

www.igi.org

DIAMOND REPORT



May 10, 2024

IGI Report Number **LG633448721**

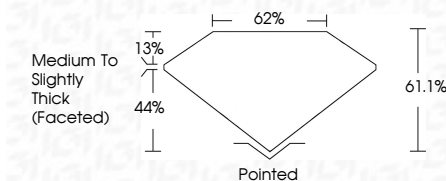
Description	LABORATORY GROWN DIAMOND
-------------	--------------------------

Shape and Cutting Style **OVAL BRILLIANT**

Measurements 10.23 X 6.97 X 4.26 MM

GRADING RESULTS

Carat Weight 1.92 CARAT

Color Grade EClarity Grade WS 2

ADDITIONAL GRADING INFORMATION

Polish **EXCELLENT**Symmetry **EXCELLENT**Fluorescence **NONE**Inscription(s) LG633448721

Comments: This Laboratory Grown Diamond was created by Chemical Vapor Deposition (CVD) growth process and may include post-growth treatment.
Type IIa

[illegible]