

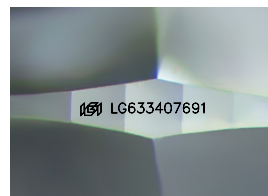
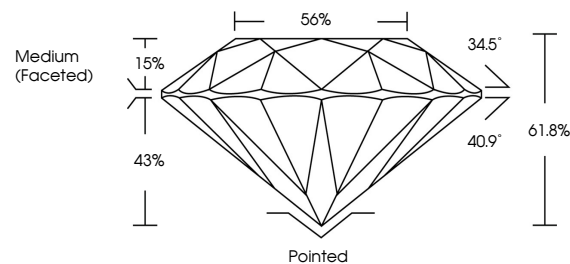


ELECTRONIC COPY

LABORATORY GROWN DIAMOND REPORT

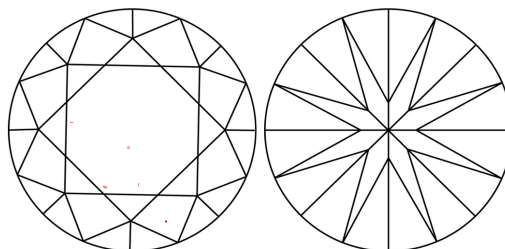
LG633407691
Report verification at igi.org

PROPORTIONS



Sample Image Used

CLARITY CHARACTERISTICS



KEY TO SYMBOLS

Red symbols indicate internal characteristics.
Green symbols indicate external characteristics.

COLOR

D E F G H I J Faint Very Light Light

CLARITY

IF	VVS ¹⁻²	VS ¹⁻²	SI ¹⁻²	I ¹⁻³
Internally Flawless	Very Very Slightly Included	Very Slightly Included	Slightly Included	Included



© IGI 2020, International Gemological Institute

FD - 10 20

DIAMOND REPORT



May 12, 2024

IGI Report Number **LG633407691**

Description	LABORATORY GROWN DIAMOND
-------------	--------------------------

Shape and Cutting Style **ROUND BRILLIANT**

Measurements 8.05 - 8.09 X 4.99 MM

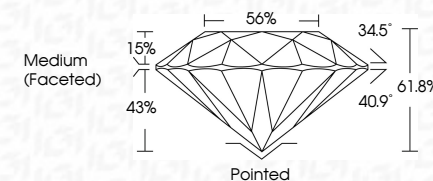
GRADING RESULTS

Carat Weight 1.99 CARAT

Color Grade

Clarity Grade VS 1

Cut Grade **IDEAL**



ADDITIONAL GRADING INFORMATION

Polish **EXCELLENT**Symmetry **EXCELLENT**Fluorescence **NONE**Inscription(s) LG633407691

Comments: This Laboratory Grown Diamond was created by Chemical Vapor Deposition (CVD) growth process and may include post-growth treatment.
Type IIa



May 12, 2024	1.95 CARAT	
GI Report No LG633407691		
ROUND BRILLIANT		
0.05 - 0.09 X 4.97 MM		
Cord Weight		
Cord Grade		
Clarity Grade	Vs 1	
Color Grade	IDEAL	
Depth	61.8%	
Table	56%	
Girdle	Medium (Faceted)	
Culet	Pointed	
Polish	EXCELLENT	
Symmetry	EXCELLENT	
Fluorescence	NONE	
Inscriptions(s)	lg61LG633407691	
Comments:		
<p>The Laboratory Crown Diamond was certified to be a natural diamond with no detectable treatment and no GVD growth process and may include post-growth treatment.</p>		
Type IIA		