

Diamond Information

Light Performance

Date February 17, 2025

Gemprint ID RDN1-2888

Reference No. P308536 / GIA6202124682

Shape Round

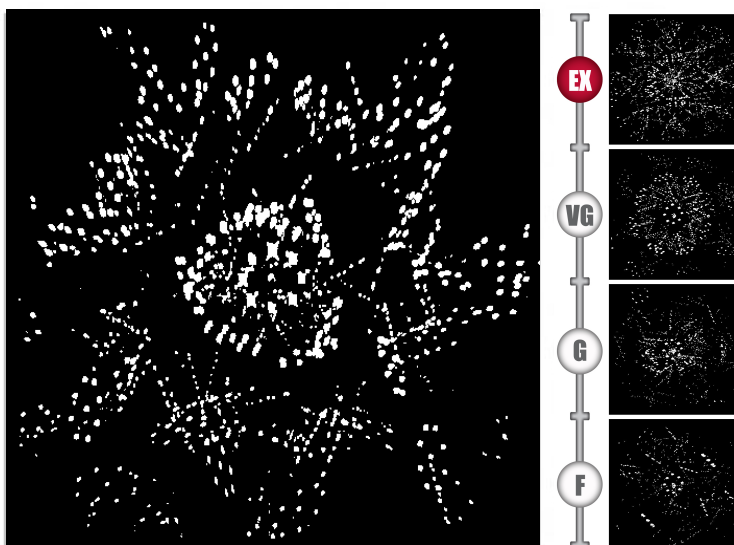
Weight 1.03 carat(s)

Measurements 6.35-6.39x3.98mm

Light Return 

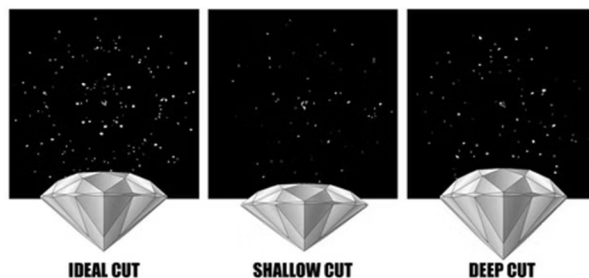
Scintillation 

Light Return



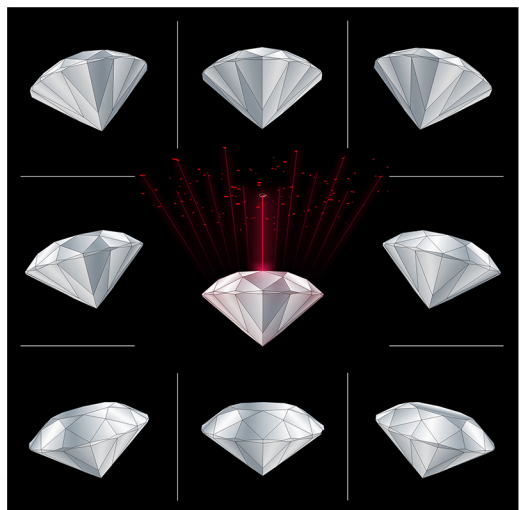
What is Light Return?

Light Return, also known as brilliance or total brightness, is the exceptional way diamonds reflect and refract light, creating a luminous display that has captivated viewers for centuries. Gemprint's Light Performance technology captures and measures the actual light output from a diamond. The Gemprint instrument shines a single red laser beam into a diamond and analyzes the emitted light. First, data is collected by directing the beam perpendicularly into the diamond. Then, the instrument tilts the diamond approximately 12-14 degrees in eight different directions to assess light return from various angles. The collected



What is Scintillation?

Scintillation refers to the sparkling flashes of light observed when a diamond is moved. Since diamonds are rarely viewed from a single angle, scintillation evaluates the overall light return from the diamond as it is viewed from various perspectives. Gemprint Light Performance captures the diamond's light return at nine distinct positions, represented by the nine images displayed in the "Scintillation" section of this report.



Gemprint® is the world's most sophisticated, non-invasive technology for positive diamond identification. It records the unique optical "fingerprint" of each diamond, much like a human fingerprint.

Gemprint® Light Performance technology assesses a diamond's actual light output by measuring its Light Return, Scintillation, and Optical Symmetry. The instrument shines a single beam of light into the diamond. As this light is reflected and refracted by every facet and internal characteristic, Gemprint® analyzes the light returning from the diamond. By collecting data from 9 different positions, Gemprint® provides a true analysis of a diamond's light handling ability, unlike other cut grading systems that rely on hypothetical models. Gemprint® Light Performance is the only system that allows you to easily verify that the reported light performance pertains to your specific diamond.



Scan to learn more about Gemprint® Light performance.

Gemprint®
The fingerprint system for diamonds®

580 5th Ave, 27th Fl, New York, NY 10036
212-997-0007 • info@gemprint.com
www.gemprint.com