

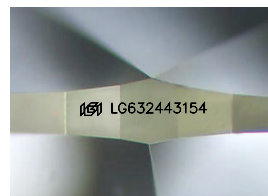
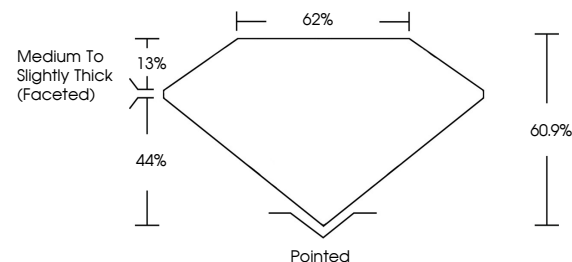


**ELECTRONIC COPY**

## LABORATORY GROWN DIAMOND REPORT

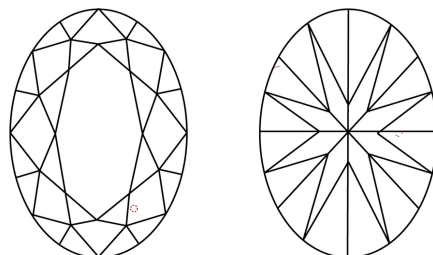
LG632443154  
Report verification at [lgi.org](https://lgi.org)

## PROPORTIONS



Sample Image Used

## CLARITY CHARACTERISTICS



## KEY TO SYMBOLS

Red symbols indicate internal characteristics.  
Green symbols indicate external characteristics.

## COLOR

D E F G H I J Faint Very Light Light

## CLARITY

IF	VVS <sup>1-2</sup>	VS <sup>1-2</sup>	SI <sup>1-2</sup>	I <sup>1-3</sup>
Internally Flawless	Very Very Slightly Included	Very Slightly Included	Slightly Included	Included



© IGI 2020, International Gemological Institute

FD - 10 20

**www.igi.org**

## DIAMOND REPORT



May 6, 2024

IGI Report Number **LG632443154**

Description	LABORATORY GROWN DIAMOND
-------------	--------------------------

Shape and Cutting Style **OVAL BRILLIANT**

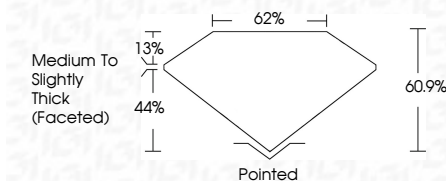
Measurements **8.73 X 5.91 X 3.60 MM**

## GRADING RESULTS

Carat Weight 1.15 CARAT

Color Grade	D
-------------	---

Clarity Grade VS 2



### ADDITIONAL GRADING INFORMATION

Polish **EXCELLENT**Symmetry **EXCELLENT**Fluorescence NONIInscription(s)  LG632443154

Comments: This Laboratory Grown Diamond was created by Chemical Vapor Deposition (CVD) growth process and may include post-growth treatment.  
Type IIa



May 6, 2024	GI Report No LG592443154	1.15 CARAT	VS 2	Polished	EXCELLENT	NONE	Serial LG592443154
Color: CARAT BRILLIANT	Carat Weight	Color Grade	Clarity Grade	Culet	Polish	Symmetry	Fluorescence
5.73 X 5.91 X 3.60 MM			Depth				Measurements (mm)
			Table				
			Girdle				
				Medium to Slightly Thick (Faceted)			

**Comments:**  
This Laboratory Grown Diamond was  
created by Chemical Vapor Deposition  
(CVD) growth process and may include  
post-growth treatment.