



**ELECTRONIC COPY**

## LABORATORY GROWN DIAMOND REPORT

June 5, 2024	
IGI Report Number	LG637458099
Description	LABORATORY GROWN DIAMOND
Shape and Cutting Style	MARQUISE BRILLIANT
Measurements	12.58 X 5.90 X 3.72 MM

## GRADING RESULTS

Carat Weight	1.57 CARAT
Color Grade	F
Clarity Grade	VVS 2

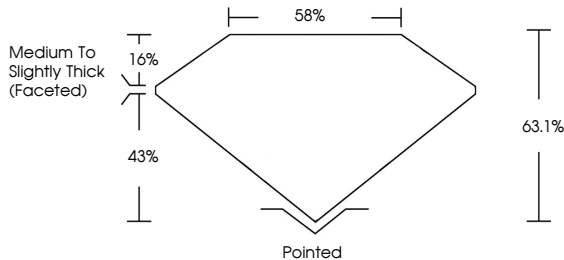
### ADDITIONAL GRADING INFORMATION

Polish	EXCELLENT
Symmetry	EXCELLENT
Fluorescence	NONE
Inscription(s)	 LG637458099

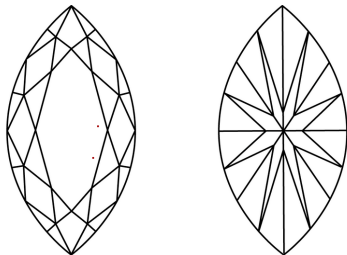
Comments: This Laboratory Grown Diamond was created by Chemical Vapor Deposition (CVD) growth process.  
Type IIa

LG637458099  
Report verification at [igi.org](https://igi.org)

## PROPORTIONS

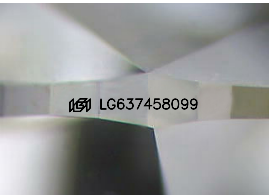


## CLARITY CHARACTERISTICS



## KEY TO SYMBOLS

Red symbols indicate internal characteristics.  
Green symbols indicate external characteristics.



Sample Image Used

## COLOR

D E F G H I J Faint Very Light Light

## CLARITY

IF	VVS <sup>1-2</sup>	VS <sup>1-2</sup>	SI <sup>1-2</sup>	I <sup>1-3</sup>
Internally Flawless	Very Very Slightly Included	Very Slightly Included	Slightly Included	Included



© IGI 2020, International Gemological Institute

FD - 10 20

**www.igi.org**

## DIAMOND REPORT



June 5, 2024	
IGI Report Number	LG637458099
Description	LABORATORY GROWN DIAMOND
Shape and Cutting Style	MARQUISE BRILLIANT
Measurements	12.58 X 5.90 X 3.72 MM

## GRADING RESULTS

Carat Weight	1.57 CARAT
Color Grade	F
Clarity Grade	VVS 2

### ADDITIONAL GRADING INFORMATION

Polish	EXCELLENT
Symmetry	EXCELLENT
Fluorescence	NONE
Inscription(s)	 LG637458099
Comments: This Laboratory Grown Diamond was created by Chemical Vapor Deposition (CVD) growth process.	
Type IIa	



IGI

June 5, 2024

IGI Report No LG637458099

**MARQUISE BRILLIANT**  
**12.58 X 5.90 X 3.72 MM**

Carat Weight	1.57 CARAT
Color Grade	F

Clarity Grade	WS 2
FL	100%
IF	95%
VVS	85%
VS	75%
SI	65%
I	55%
SI2	45%
I2	35%
SI1	25%
I1	15%
SI3	5%
I3	5%

Depth	63.1%
Table	58%

Girdle  
Medium To Slightly  
Thick (Faceted)

Culet	Pointed
Polish	EXCELLENT

	EXCELLENT	NONE
Symmetry		
Fluorescence		

Inscription(s)	151 LG637458099

Comments:

This Laboratory Grown Diamond was created by Chemical Vapor Deposition (CVD) growth process.

Type IIa