

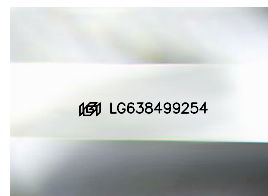
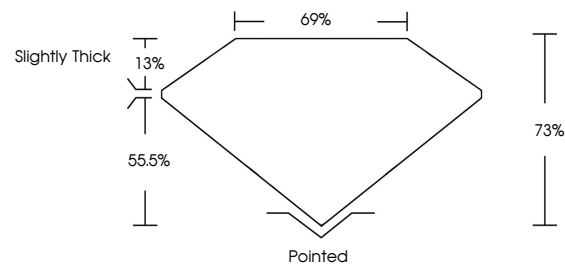


ELECTRONIC COPY

LABORATORY GROWN DIAMOND REPORT

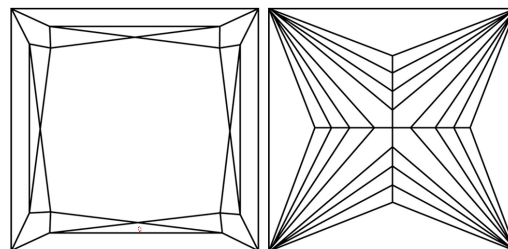
LG638499254
Report verification at igi.org

PROPORTIONS



Sample Image Used

CLARITY CHARACTERISTICS



KEY TO SYMBOLS

Red symbols indicate internal characteristics.
Green symbols indicate external characteristics.

COLOR

D E F G H I J Faint Very Light Light

CLARITY

IF	VVS ¹⁻²	VS ¹⁻²	SI ¹⁻²	I ¹⁻³
Internally Flawless	Very Very Slightly Included	Very Slightly Included	Slightly Included	Included



© IGI 2020, International Gemological Institute

FD - 10 20

www.igi.org

DIAMOND REPORT



June 6, 2024

IGI Report Number **LG638499254**

Description	LABORATORY GROWN DIAMOND
-------------	--------------------------

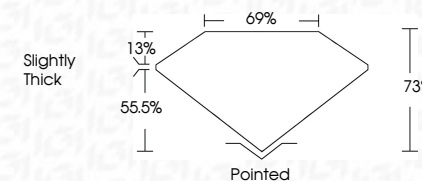
Shape and Cutting Style **PRINCESS CUT**

Measurements **6.89 X 6.73 X 4.91 MM**

GRADING RESULTS

Carat Weight **2.07 CARATS**

Color Grade E

Clarity Grade **VVS 2**

ADDITIONAL GRADING INFORMATION

Polish **EXCELLENT**Symmetry **EXCELLENT**Fluorescence **NONE**Inscription(s) LG638499254

Comments: This Laboratory Grown Diamond was created by Chemical Vapor Deposition (CVD) growth process.
Type IIa



June 6, 2024
GI Report No LG638499254
PRINCESS CUT

6.89 X 6.73 X 4.91 MM	2.07 CARATS
Carat Weight	E
Color Grade	VVS 2
Clarity Grade	73%
Depth	69%
Table	Slightly Thick
Girdle	Poined
Culet	EXCELLENT
Polish	EXCELLENT
Symmetry	NONE
Fluorescence	None / Case Specific

Comments:
This Laboratory Grown Diamond was created by Chemical Vapor Deposition (CVD) growth process.