

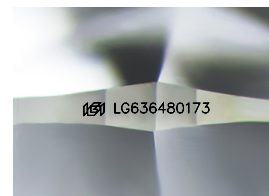
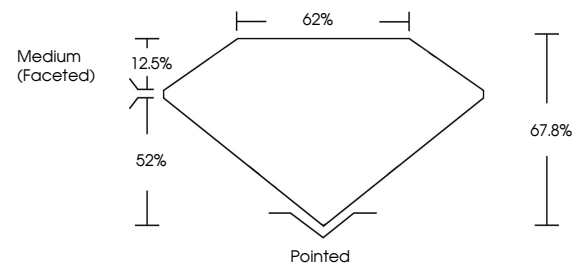


**ELECTRONIC COPY**

## LABORATORY GROWN DIAMOND REPORT

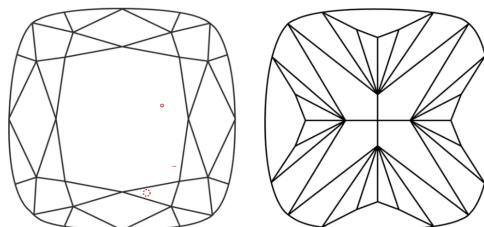
LG636480173  
Report verification at [igi.org](https://igi.org)

## PROPORTIONS



Sample Image Used

## CLARITY CHARACTERISTICS



### KEY TO SYMBOLS

Red symbols indicate internal characteristics.  
Green symbols indicate external characteristics.

**COLOR**

D E F G H I J Faint Very Light Light

## CLARITY

IF	VVS <sup>1-2</sup>	VS <sup>1-2</sup>	SI <sup>1-2</sup>	I <sup>1-3</sup>
Internally Flawless	Very Very Slightly Included	Very Slightly Included	Slightly Included	Included



© IGI 2020, International Gemological Institute

FD - 10 20

**www.igi.org**

## DIAMOND REPORT



May 28, 2024

IGI Report Number **LG636480173**

Description	LABORATORY GROWN DIAMOND
-------------	--------------------------

Shape and Cutting Style **SQUARE CUSHION BRILLIANT**

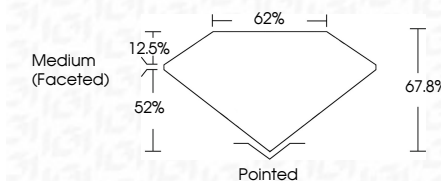
Measurements **7.46 X 7.33 X 4.97 MM**

## GRADING RESULTS

Carat Weight 2.09 CARATS

Color Grade G

Clarity Grade VS 1



### ADDITIONAL GRADING INFORMATION

Polish **EXCELLENT**Symmetry **EXCELLENT**Fluorescence **NONE**Inscription(s)  LG636480173

Comments: This Laboratory Grown Diamond was created by Chemical Vapor Deposition (CVD) growth process.  
Type IIa



May 26, 2024	Q1 Report No LG3648073	2.09 CARATS	G	Vs 1	Painted	Comments: This Laboratory Grown Diamond was created by Chemical Vapor Deposition (CVD) growth process. Type IIa
SI GRADE CUSHION BRILLIANT				67.8%	EXCELLENT	
46 x 7.33 x 4.57 MM				62%	EXCELLENT	
Color Weight					NONE	
Color Grade					Ig1 LG3648073	
Clarity Grade				Medium (Faceted)		
Depth						
Table						
Grain						
Quiet						
Polish						
Symmetry						
Fluorescence						
Inscription(s)						