



ELECTRONIC COPY

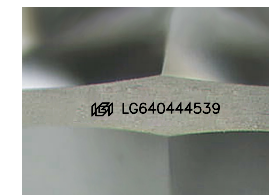
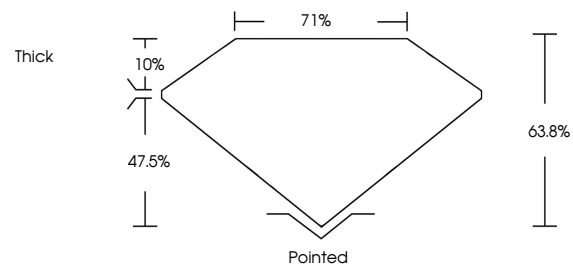
LG640444539
Report verification at igi.org



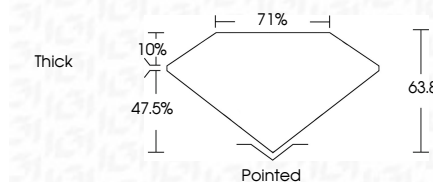
July 3, 2024
IGI Report Number **LG640444539**
Description **LABORATORY GROWN DIAMOND**
Shape and Cutting Style **LOZENGE STEP CUT**
Measurements **9.15 X 6.11 X 3.90 MM**
GRADING RESULTS
Carat Weight **1.02 CARAT**
Color Grade **E**
Clarity Grade **VS 1**

July 3, 2024
IGI Report Number **LG640444539**
Description **LABORATORY GROWN DIAMOND**
Shape and Cutting Style **LOZENGE STEP CUT**
Measurements **9.15 X 6.11 X 3.90 MM**
GRADING RESULTS
Carat Weight **1.02 CARAT**
Color Grade **E**
Clarity Grade **VS 1**

PROPORTIONS



Sample Image Used



ADDITIONAL GRADING INFORMATION

Polish **EXCELLENT**
Symmetry **EXCELLENT**
Fluorescence **NONE**
Inscription(s) **IGI LG640444539**

Comments: This Laboratory Grown Diamond was created by Chemical Vapor Deposition (CVD) growth process.
Type IIa

ADDITIONAL GRADING INFORMATION

Polish **EXCELLENT**
Symmetry **EXCELLENT**
Fluorescence **NONE**
Inscription(s) **IGI LG640444539**
Comments: This Laboratory Grown Diamond was created by Chemical Vapor Deposition (CVD) growth process.
Type IIa

COLOR

D E F G H I J Faint Very Light Light

CLARITY

IF	VS ¹⁻²	VS ¹⁻²	SI ¹⁻²	I ¹⁻³
Internally Flawless	Very Very Slightly Included	Very Slightly Included	Slightly Included	Included



IGI



July 3, 2024
IGI Report No **LG640444539**
LOZENGE STEP CUT
9.15 X 6.11 X 3.90 MM
1.02 CARAT
E
VS 1
63.8%
71%
Thick
Pointed
EXCELLENT
EXCELLENT
NONE
IGI LG640444539
Comments: This Laboratory Grown Diamond was created by Chemical Vapor Deposition (CVD) growth process.
Type IIa