



**ELECTRONIC COPY**

## LABORATORY GROWN DIAMOND REPORT

July 30, 2022	
IGI Report Number	LG541250311
Description	LABORATORY GROWN DIAMOND
Shape and Cutting Style	CUT CORNERED RECTANGULAR MODIFIED BRILLIANT
Measurements	10.76 X 7.45 X 5.01 MM

## GRADING RESULTS

Carat Weight	3.45 CARATS
Color Grade	G
Clarity Grade	SI 1

### ADDITIONAL GRADING INFORMATION

Polish	EXCELLENT
Symmetry	EXCELLENT
Fluorescence	NONE
Inscription(s)	LABGROWN IGI LG541250311

Comments: This Laboratory Grown Diamond was created by Chemical Vapor Deposition (CVD) growth process and may include post-growth treatment.  
Type IIa

LG541250311

**PROPORTIONS**

Medium

65%

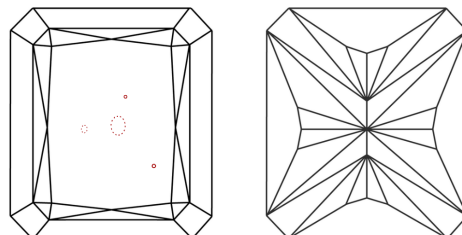
14%

50.5%

67.2%

Pointed

## CLARITY CHARACTERISTICS

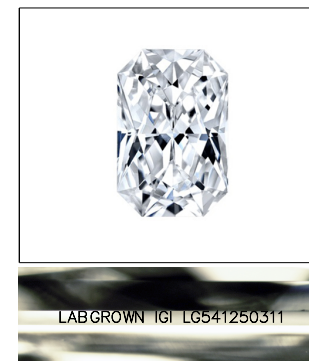


## KEY TO SYMBOLS

Red symbols indicate internal characteristics.  
Green symbols indicate external characteristics.

## GRADING SCALES

COLOR GRADING SCALE	CL		NC		FT		VLT		LT	
	COLORLESS D-F		NEAR COLORLESS G-J		FAINT K-M		VERY LIGHT N-R		LIGHT S-Z	
CLARITY (10x) GRADING SCALE	FL IF		VVS		VS		SI		I	
	FLAWLESS INTERNALLY FLAWLESS		VERY VERY SLIGHTLY INCLUDED		VERY SLIGHTLY INCLUDED		SLIGHTLY INCLUDED		INCLUDED	

LASERSCRIBE<sup>SM</sup>

Sample Image Used



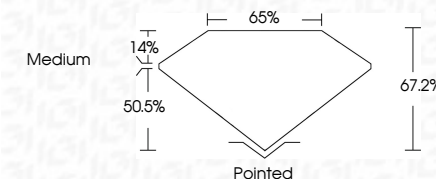
© IGI 2020, International Gemological Institute

FD - 10 20

**www.igi.org**

## LABORATORY GROWN DIAMOND REPORT

July 30, 2022	
IGI Report Number	LG541250311
Description	LABORATORY GROWN DIAMOND
Shape and Cutting Style	CUT CORNERED RECTANGULAR MODIFIED BRILLIANT
Measurements	10.76 X 7.45 X 5.01 MM
<b>GRADING RESULTS</b>	
Carat Weight	3.45 CARATS
Color Grade	G
Clarity Grade	SI 1



### ADDITIONAL GRADING INFORMATION

Polish	EXCELLENT
Symmetry	EXCELLENT
Fluorescence	NONE
Inscription(s)	LABGROWN IGI LG541250311

Inscription(s) LABGROWN IGI LG541250311

Comments: This Laboratory Grown Diamond was created by Chemical Vapor Deposition (CVD) growth process and may include post-growth treatment.  
Type IIa



July 30, 2022	GI Report No. LG547260311	3.45 CARATS	Pointed
SI	UNCONFERED REC. MODIFIED	G	EXCELLENT
10.0 X 7.75 X 6.01 MM		SI 1	EXCELLENT
Color Grade		67.2%	NONE
Clarity Grade		65%	LASER-GROWN (GI)
Depth		Medium	LG547260311
Table			
Girdle			
Culet			
Polish			
Symmetry			
Fluorescence (inclusions?)			
Comments:			
This Laboratory Grown Diamond was created by Chemical Vapor Deposition (CVD) growth process and may include post-growth treatment.			
Type IId			