



**INTERNATIONAL
GEMOLOGICAL
INSTITUTE**

ELECTRONIC COPY

LABORATORY GROWN DIAMOND REPORT

November 9, 2022	
IGI Report Number	LG553234741
Description	LABORATORY GROWN DIAMOND
Shape and Cutting Style	ROUND BRILLIANT
Measurements	8.12 - 8.16 X 5.05 MM

GRADING RESULTS

Carat Weight	2.06 CARATS
Color Grade	G
Clarity Grade	VS 1
Cut Grade	IDEAL

ADDITIONAL GRADING INFORMATION

Polish	EXCELLENT
Symmetry	EXCELLENT
Fluorescence	NONE

Inscription(s) **LABGROWN** **LG553234741**

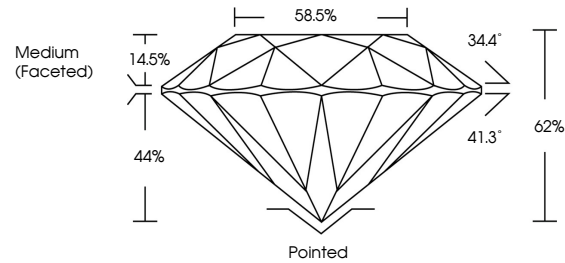
Comments: This Laboratory Grown Diamond was created by Chemical Vapor Deposition (CVD) growth process and may include post-growth treatment.
Type IIa

LABORATORY GROWN DIAMOND REPORT

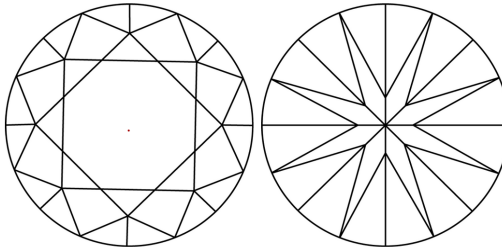
LG553234741

Report verification at igi.org

PROPORTIONS



CLARITY CHARACTERISTICS



KEY TO SYMBOLS

Red symbols indicate internal characteristics.
Green symbols indicate external characteristics.

LABORATORY GROWN
DIAMOND REPORT

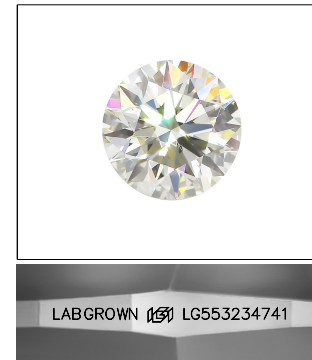
GRADING SCALES

CLARITY

IF	VVS ¹⁻²	VS ¹⁻²	SI ¹⁻²	I ¹⁻³
Internally Flawless	Very Very Slightly Included	Very Slightly Included	Slightly Included	Included

COLOR

D E F G H I J Faint Very Light Light

LASERSCRIBESM

Sample Image Used



© IGI 2020, International Gemological Institute

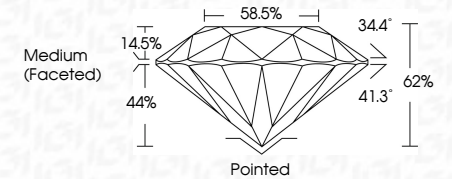
FD - 10 20

LABORATORY GROWN DIAMOND REPORT

November 9, 2022	
IGI Report Number	LG553234741
Description	LABORATORY GROWN DIAMOND
Shape and Cutting Style	ROUND BRILLIANT
Measurements	8.12 - 8.16 X 5.05 MM

GRADING RESULTS

Carat Weight	2.06 CARATS
Color Grade	G
Clarity Grade	VS 1
Cut Grade	IDEAL



ADDITIONAL GRADING INFORMATION

Polish	EXCELLENT
Symmetry	EXCELLENT
Fluorescence	NONE
Inscription(s)	LABGROWN (15) LG553234741

Comments: This Laboratory Grown Diamond was created by Chemical Vapor Deposition (CVD) growth process and may include post-growth treatment.
Type IIa



IGI

November 9, 2022	IGI Report No IGS6324741	2.08 CARATS	G	VSI	IDEAL	62%	58.8%	Medium (Gcoated)	Polished	EXCELLENT	EXCELLENT	NONE	LARGESOURCE / IGI IGS6324741	Comments: The Laboratory Grown Diamond used in this report was produced by CVD technology. CVD growth process may include post-growth treatment. Type IIa
		Color Weight	Color Grade	Clarity Grade	Cut Grade	Depth	Table	Girdle	Fluorescence	Symmetry	Inclusions(s)			

Comments:
This Laboratory Grown Diamond was created by Chemical Vapor Deposition (CVD) growth process and may include post-growth treatment.
type IIa