



ELECTRONIC COPY

LABORATORY GROWN DIAMOND REPORT

October 13, 2022	
IGI Report Number	LG551271385
Description	LABORATORY GROWN DIAMOND
Shape and Cutting Style	CUT CORNERED RECTANGULAR MODIFIED BRILLIANT
Measurements	9.87 X 7.18 X 4.84 MM

GRADING RESULTS

Carat Weight	3.04 CARATS
Color Grade	G
Clarity Grade	VVS 2

ADDITIONAL GRADING INFORMATION

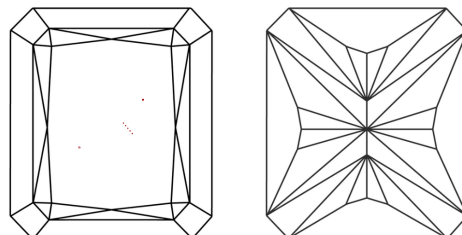
Polish	EXCELLENT
Symmetry	EXCELLENT
Fluorescence	NONE
Inscription(s)	LABGROWN 151 LG551271385

Comments: This Laboratory Grown Diamond was created by Chemical Vapor Deposition (CVD) growth process and may include post-growth treatment.
Type IIa

Diagram illustrating the proportions of a diamond-shaped gemstone, labeled LG551271385. The proportions are defined by the following measurements:

- Top Width:** 59%
- Bottom Width:** 48%
- Left Side Length:** 14.5%
- Right Side Length:** 67.4%
- Shape Description:** Medium To Slightly Thick, Pointed

CLARITY CHARACTERISTICS

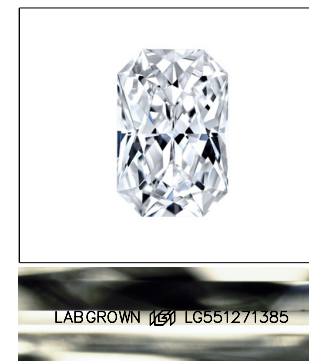


KEY TO SYMBOLS

Red symbols indicate internal characteristics.
Green symbols indicate external characteristics.

GRADING SCALES

COLOR GRADING SCALE	CL		NC		FT		VLT		LT	
	COLORLESS D-F		NEAR COLORLESS G-J		FAINT K-M		VERY LIGHT N-R		LIGHT S-Z	
CLARITY (10x) GRADING SCALE	FL	IF	VVS		VS		SI		I	
	FLAWLESS INTERNALLY FLAWLESS		VERY VERY SLIGHTLY INCLUDED		VERY SLIGHTLY INCLUDED		SLIGHTLY INCLUDED		INCLUDED	

LASERSCRIBESM

Sample Image Used



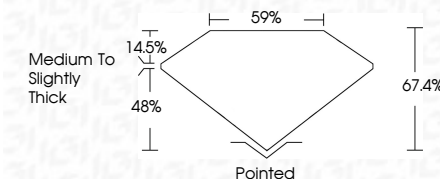
© IGI 2020, International Gemological Institute

FD - 10 20

www.igi.org

LABORATORY GROWN DIAMOND REPORT

October 13, 2022	
IGI Report Number	LG551271385
Description	LABORATORY GROWN DIAMOND
Shape and Cutting Style	CUT CORNERED RECTANGULAR MODIFIED BRILLIANT
Measurements	9.87 X 7.18 X 4.84 MM
GRADING RESULTS	
Carat Weight	3.04 CARATS
Color Grade	G
Clarity Grade	VVS 2



ADDITIONAL GRADING INFORMATION

Polish	EXCELLENT
Symmetry	EXCELLENT
Fluorescence	NONE
Inscription(s)	LABGROWN (15) LG551271385

Comments: This Laboratory Grown Diamond was created by Chemical Vapor Deposition (CVD) growth process and may include post-growth treatment.
Type IIa



October 13, 2022	GL Report No. LG55127/395	3.04 CARATS
GL CONFIRMED BCT. MODIFIED		G
3.07 X 3.71 X 4.84 MM		VHS 2
		67.4%
		55%
	Medium To Slightly Thick	
	Polished	
	EXCELLENT	
	EXCELLENT	
	NONE	
	LASER GROWN (INSPECTIONS)	
	LG55127/395	
	Comments:	
	This Laboratory Grown Diamond was	
	grown using a High Pressure High Temperature (HPHT) growth process and may include	
	post-growth treatment.	
	Type IIA	