



**ELECTRONIC COPY**

LABORATORY GROWN  
DIAMOND REPORT

## LABORATORY GROWN DIAMOND REPORT

## LABORATORY GROWN DIAMOND REPORT

August 15, 2021

IGI Report Number **LG483117056**

Description	LABORATORY GROWN DIAMOND
-------------	-----------------------------

Shape and Cutting Style **PRINCESS CUT**

Measurements	6.29 X 6.17 X 4.39 MM
--------------	-----------------------

## GRADING RESULTS

Carat Weight 1.50 CARAT

Color Grade D

Clarity Grade VVS 2

### ADDITIONAL GRADING INFORMATION

Polish EXCELLENT

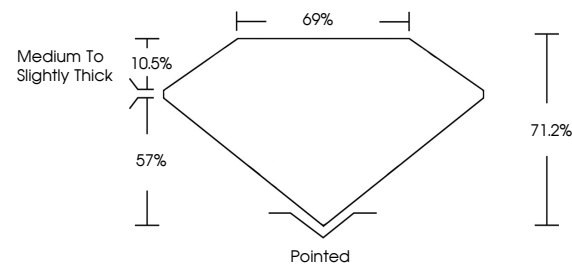
Symmetry **EXCELLENT**Fluorescence **NONE**

Inscription(s) LABGROWN | G | LG483117056

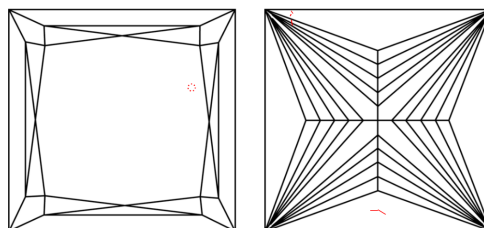
Comments: This Laboratory Grown Diamond was created by Chemical Vapor Deposition (CVD) growth process and may include post-growth treatment Type IIa

LG483117056

## PROPORTIONS



## CLARITY CHARACTERISTICS



## KEY TO SYMBOLS

Red symbols indicate internal characteristics.  
Green symbols indicate external characteristics.

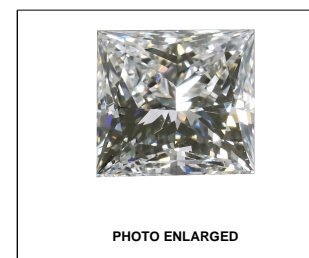
## GRADING SCALES

COLOR GRADING SCALE	CL		NC		FT		VLT		LT	
	COLORLESS D-F		NEAR COLORLESS G-J		FAINT K-M		VERY LIGHT N-R		LIGHT S-Z	
CLARITY (10x) GRADING SCALE	FL IF		VVS		VS		SI		I	
	FLAWLESS INTERNALLY FLAWLESS		VERY VERY SLIGHTLY INCLUDED		VERY SLIGHTLY INCLUDED		SLIGHTLY INCLUDED		INCLUDED	

The laboratory growth diamond described in this Report (Report) has been graded, tested, analyzed, examined and/or inscribed by International Gemological Institute (I.G.I.). A laboratory grown diamond is one that has essentially the same chemical, physical and optical properties as a mined diamond, with the exception of being grown by man-made processes. I.G.I. does not grade, test, analyze, examine and/or inscribe laboratory grown diamonds currently available to I.G.I. including, without limitation, 10X magnification, corrected, double-terminated, binocular microscope, master color comparison stones, non-contact optical spectrometers, ultraviolet fluorescence, ultraviolet-visible spectroscopy, and other instruments and/or processes as deemed appropriate by I.G.I. This Report includes advanced security features. A duly accredited gemologist or jeweler can advise you with respect to the importance of and interrelationship between cut, color, clarity and carat weight.

**THIS REPORT IS NEITHER A GUARANTEE, VALUATION, NOR APPRAISAL OF THE GEMSTONE DESCRIBED HEREIN. PLEASE REVIEW THE LIMITATIONS AND RESTRICTIONS SET FORTH ONLINE. FOR ADDITIONAL INFORMATION, VISIT [WWW.IGI.COM](http://WWW.IGI.COM). LIMITATIONS AND DISCLAIMERS, PLEASE GO TO [WWW.IGI.COM/US/EN/US880019/US880019.PDF](http://WWW.IGI.COM/US/EN/US880019/US880019.PDF).**

© INTERNATIONAL GEMOLOGICAL INSTITUTE, INC.



| ABGROWN | G | G483117056

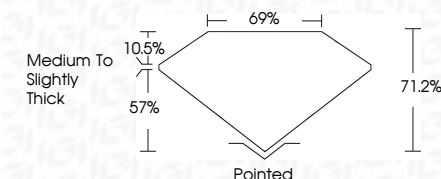
LASERSCRIBE<sup>SM</sup>

© IGI 2020. International Gemological Institute

FD - 10 20

**www.igi.org**

August 15, 2021	
IGI Report Number	LG483117056
Description	LABORATORY GROWN DIAMOND
Shape and Cutting Style	PRINCESS CUT
Measurements	6.29 X 6.17 X 4.39 MM
<b>GRADING RESULTS</b>	
Carat Weight	1.50 CARAT
Color Grade	D
Clarity Grade	VVS 2



### ADDITIONAL GRADING INFORMATION

Polish	EXCELLENT
Symmetry	EXCELLENT
Fluorescence	NONE
Inscription(s)	LABGROWN IGI LG483117056

Comments: This Laboratory Grown Diamond was created by Chemical Vapor Deposition (CVD) growth process and may include post-growth treatment  
Type IIa



August 15, 2021	IGI Report No LG48317056	
PRINCESS CUT		
29.29 X 6.17 X 4.59 MM		
Carat Weight	1.60 CARAT	D
Color Grade	VVS2	71.2%
Clarity Grade	71.2%	69%
Depth	Medium To Slightly Thick	Pointed
Table	EXCELLENT	EXCELLENT
Grade	EXCELLENT	NONE
Symmetry	LARGROWN/GI	LG48317056
Fluorescence		
Inscriptions(s)		
Comments:	This Laboratory Grown Diamond was created by Chemical Vapor Deposition (CVD) growth process and includes post-growth treatment.	