



ELECTRONIC COPY

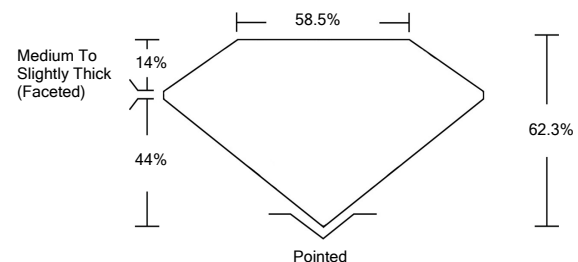
LABORATORY GROWN DIAMOND REPORT

March 21, 2022	
IGI Report Number	LG519268779
Description	LABORATORY GROWN DIAMOND
Shape and Cutting Style	OVAL BRILLIANT
Measurements	12.18 X 8.62 X 5.37 MM
GRADING RESULTS	
Carat Weight	3.53 CARATS
Color Grade	G
Clarity Grade	VS 2
ADDITIONAL GRADING INFORMATION	
Polish	EXCELLENT
Symmetry	EXCELLENT
Fluorescence	NONE
Inscription(s)	LABGROWN IGI LG519268779

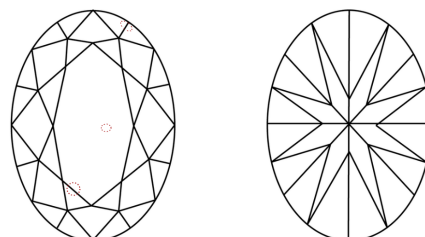
Comments: This Laboratory Grown Diamond was created by Chemical Vapor Deposition (CVD) growth process and may include post-growth treatment.
Type IIa

LG519268779

PROPORTIONS



CLARITY CHARACTERISTICS

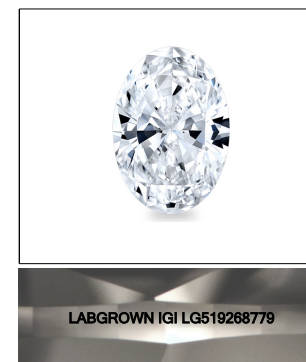


KEY TO SYMBOLS

Red symbols indicate internal characteristics.
Green symbols indicate external characteristics.

GRADING SCALES

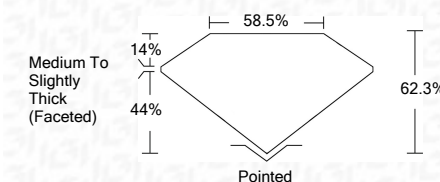
COLOR GRADING SCALE	CL	NC	FT	VLT	LT	
	COLORLESS D-F	NEAR COLORLESS G-J	FAINT K-M	VERY LIGHT N-R	LIGHT S-Z	
CLARITY (10x) GRADING SCALE	FL	IF	VVS	VS	SI	I
	FLAWLESS INTERNALLY FLAWLESS	VERY VERY SLIGHTLY INCLUDED	VERY SLIGHTLY INCLUDED	SLIGHTLY INCLUDED	INCLUDED	



LASERSCRIBESM

Sample Image Used

March 21, 2022	
IGI Report Number	LG519268779
Description	LABORATORY GROWN DIAMOND
Shape and Cutting Style	OVAL BRILLIANT
Measurements	12.18 X 8.62 X 5.37 MM
GRADING RESULTS	
Carat Weight	3.53 CARATS
Color Grade	G
Clarity Grade	VS 2



ADDITIONAL GRADING INFORMATION

Polish	EXCELLENT
Symmetry	EXCELLENT
Fluorescence	NONE
Inscription(s)	LABGROWN IGI LG519268779

Comments: This Laboratory Grown Diamond was created by Chemical Vapor Deposition (CVD) growth process and may include post-growth treatment.
Type IIa



IGI

IGI Report No. LG519268779	OVAL BRILLIANT	3.53 CARATS	G
Measurements	12.18 X 8.62 X 5.37 MM	VS 2	62.3%
Color Grade	Medium To Slightly Thick (Faceted)	58.5%	Pointed
Clarity Grade	EXCELLENT	EXCELLENT	EXCELLENT
Polish	EXCELLENT	EXCELLENT	EXCELLENT
Symmetry	EXCELLENT	EXCELLENT	EXCELLENT
Fluorescence	NONE	NONE	NONE
Inscription(s)	LABGROWN IGI LG519268779		

Comments: This Laboratory Grown Diamond was created by Chemical Vapor Deposition (CVD) growth process and may include post-growth treatment.
Type IIa

