



**ELECTRONIC COPY**

## LABORATORY GROWN DIAMOND REPORT

October 18, 2022

IGI Report Number **LG551213811**

Description **LABORATORY GROWN  
DIAMOND**

Shape and Cutting Style **OLD EUROPEAN CUT**

Measurements 7.95 X 8.00 X 5.02 MM

## GRADING RESULTS

Carat Weight 2.03 CARATS

Color Grade F

Clarity Grade VS 1

### ADDITIONAL GRADING INFORMATION

Polish EXCELLENT

Symmetry **EXCELLENT**

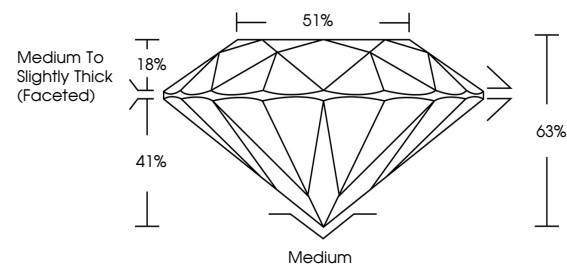
Fluorescence **NONE**

Inscription(s) LABGROWN  LG551213811

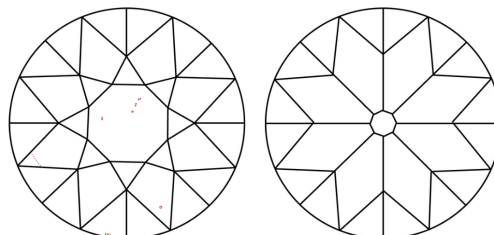
Comments: This Laboratory Grown Diamond was created by Chemical Vapor Deposition (CVD) growth process and may include post-growth treatment.  
Type IIa

LG551213811

## PROPORTIONS



## CLARITY CHARACTERISTICS

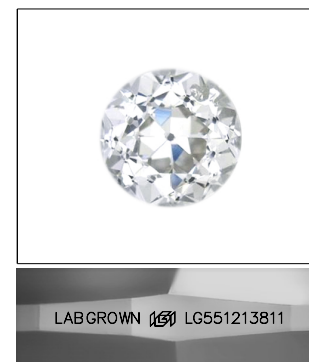


## KEY TO SYMBOLS

Red symbols indicate internal characteristics.  
Green symbols indicate external characteristics.

## GRADING SCALES

COLOR GRADING SCALE	CL		NC		FT		VLT		LT	
	COLORLESS D-F		NEAR COLORLESS G-J		FAINT K-M		VERY LIGHT N-R		LIGHT S-Z	
CLARITY (10x) GRADING SCALE	FL IF		VVS		VS		SI		I	
	FLAWLESS INTERNALLY FLAWLESS		VERY VERY SLIGHTLY INCLUDED		VERY SLIGHTLY INCLUDED		SLIGHTLY INCLUDED		INCLUDED	

LASERSCRIBE<sup>SM</sup>

Sample Image Used



© IGI 2020, International Gemological Institute

FD - 10 20

LABORATORY GROWN DIAMOND REPORT

October 18, 2022	
IGI Report Number	LG551213811
Description	LABORATORY GROWN

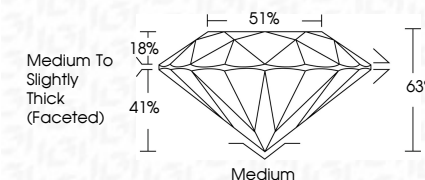
Shape and Cutting Style	OLD EUROPEAN CUT
Measurements	7.95 X 8.00 X 5.02 MM

## GRADING RESULTS

Carat Weight **2.03 CARATS**

Color Grade

Clarity Grade VS 1



### ADDITIONAL GRADING INFORMATION

Polish **EXCELLENT**Symmetry **EXCELLENT**Fluorescence **NONE**

Inscription(s) LABGROWN 15 LG551213811

Comments: This Laboratory Grown Diamond was created by Chemical Vapor Deposition (CVD) growth process and may include post-growth treatment.  
Type IIa

[illegible]