



ELECTRONIC COPY

LABORATORY GROWN DIAMOND REPORT

December 26, 2022	
IGI Report Number	LG561264910
Description	LABORATORY GROWN DIAMOND
Shape and Cutting Style	SQUARE EMERALD CUT
Measurements	10.55 X 10.50 X 6.92 MM

GRADING RESULTS

Carat Weight	7.00 CARATS
Color Grade	F
Clarity Grade	VS 2

ADDITIONAL GRADING INFORMATION

Polish	EXCELLENT
Symmetry	EXCELLENT
Fluorescence	NONE

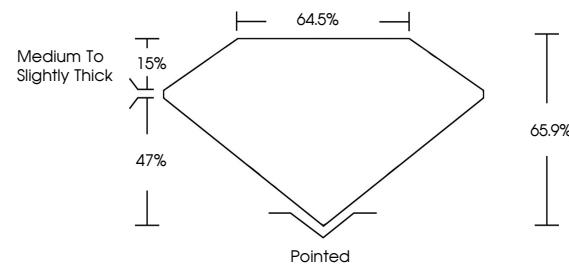
Inscription(s) **LABGROWN  LG561264910**
 Comments: This Laboratory Grown Diamond was created by Chemical Vapor Deposition (CVD) growth process and may include post-growth treatment.
 Type IIa

LABORATORY GROWN DIAMOND REPORT

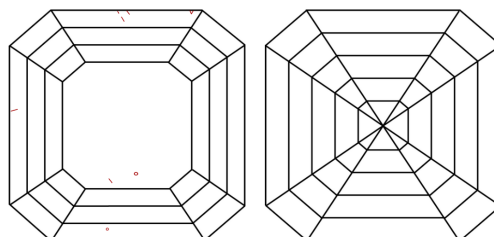
LG561264910

Report verification at igi.org

PROPORTIONS



CLARITY CHARACTERISTICS



KEY TO SYMBOLS

Red symbols indicate internal characteristics.
Green symbols indicate external characteristics.

LABORATORY GROWN
DIAMOND REPORT

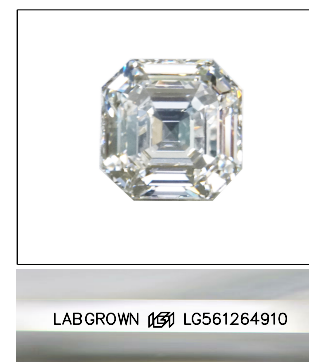
GRADING SCALES

CLARITY

IF	VVS ¹⁻²	VS ¹⁻²	SI ¹⁻²	I ¹⁻³
Internally Flawless	Very Very Slightly Included	Very Slightly Included	Slightly Included	Included

COLOR

D E F G H I J Faint Very Light Light

LASERSCRIBESM

Sample Image Used



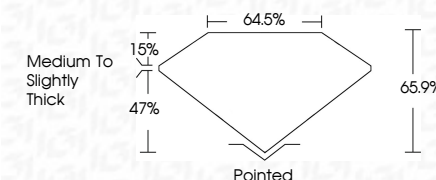
© IGI 2020, International Gemological Institute

FD - 10 20

www.igi.org

LABORATORY GROWN DIAMOND REPORT

December 26, 2022	
IGI Report Number	LG561264910
Description	LABORATORY GROWN DIAMOND
Shape and Cutting Style	SQUARE EMERALD CUT
Measurements	10.55 X 10.50 X 6.92 MM
GRADING RESULTS	
Carat Weight	7.00 CARATS
Color Grade	F
Clarity Grade	VS 2



ADDITIONAL GRADING INFORMATION

Polish	EXCELLENT
Symmetry	EXCELLENT
Fluorescence	NONE
Inscription(s)	LABGROWN (16) LG561264910

Comments: This Laboratory Grown Diamond was created by Chemical Vapor Deposition (CVD) growth process and may include post-growth treatment.
Type IIa



December 26, 2022	7.00 CARATS
IGI Report No. G561246910	
SQUARE EMERALD CUT	
10.55 X 10.50 X 6.92 MM	
Carat Weight	
Color Grade	F
Clarity Grade	VS 2
Depth	66.9%
Table	64.6%
Girdle	Medium to Slightly Thick
Culet	Pointed
Polish	EXCELLENT
Symmetry	EXCELLENT
Fluorescence	NONE
Inclusions	LARGE/NOV.16 G561246910
Comments:	
	Is Laboratory Grown Diamond was created by Chemical Vapor Deposition (CVD) growth process and may include growth treatment.
	type 1a