



ELECTRONIC COPY

LABORATORY GROWN DIAMOND REPORT

November 1, 2022	
IGI Report Number	LG553225453
Description	LABORATORY GROWN DIAMOND
Shape and Cutting Style	ROUND BRILLIANT
Measurements	8.17 - 8.24 X 4.97 MM

GRADING RESULTS

Carat Weight	2.04 CARATS
Color Grade	G
Clarity Grade	VS 1
Cut Grade	IDEAL

ADDITIONAL GRADING INFORMATION

Polish	EXCELLENT
Symmetry	EXCELLENT
Fluorescence	NONE

Inscription(s) **LABGROWN LG553225453**

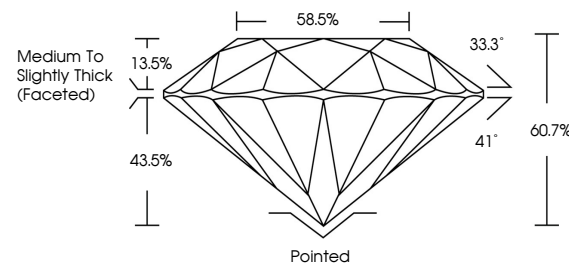
Comments: This Laboratory Grown Diamond was created by Chemical Vapor Deposition (CVD) growth process and may include post-growth treatment.
Type IIa

LABORATORY GROWN DIAMOND REPORT

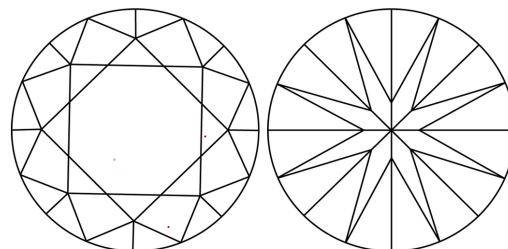
LG553225453

Report verification at igi.org

PROPORTIONS



CLARITY CHARACTERISTICS



KEY TO SYMBOLS

Red symbols indicate internal characteristics.
Green symbols indicate external characteristics.

LABORATORY GROWN
DIAMOND REPORT

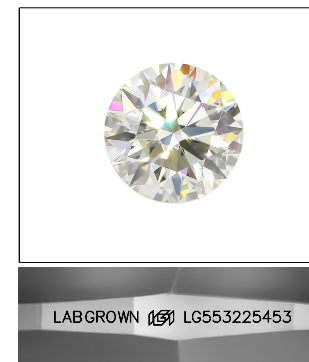
GRADING SCALES

CLARITY

IF	VVS ¹⁻²	VS ¹⁻²	SI ¹⁻²	I ¹⁻³
Internally Flawless	Very Very Slightly Included	Very Slightly Included	Slightly Included	Included

COLOR

D E F G H I J Faint Very Light Light

LASERSCRIBESM

Sample Image Used



© IGI 2020, International Gemological Institute

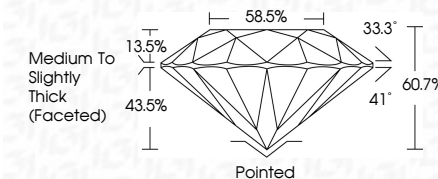
FD - 10 20

www.igi.org

LABORATORY GROWN DIAMOND REPORT

November 1, 2022	
IGI Report Number	LG553225453
Description	LABORATORY GROWN DIAMOND
Shape and Cutting Style	ROUND BRILLIANT
Measurements	8.17 - 8.24 X 4.97 MM

GRADING RESULTS	
Carat Weight	2.04 CARATS
Color Grade	G
Clarity Grade	VS 1
Cut Grade	IDEAL



ADDITIONAL GRADING INFORMATION

Polish	EXCELLENT
Symmetry	EXCELLENT
Fluorescence	NONE
Inscription(s)	LABGROWN (157) LG553225453

Comments: This Laboratory Grown Diamond was created by Chemical Vapor Deposition (CVD) growth process and may include post-growth treatment.
Type IIa



November 1, 2022	Color Grade	VS 1	Polished
GJ Report No. GSG5225453	Clarity Grade	IDEAL	EXCELLENT
ROUND BRILLIANT	Carat Weight	60.7%	EXCELLENT
8.17 - 8.24 X 5.97 MM	Cut Grade	56.5%	NONE
	Depth	Medium to Slightly Thick (Faceted)	LAGROWING (g)
	Table		1.666222468
	Girdle		
	Culet		
	Polish		
	Symmetry		
	Fluorescence		
	Inscriptions(s)		
	Comments:		
			Laboratory Grown Diamond was not used in the production of this report. CVD growth process and may include post-growth treatment.
			type IIa