



ELECTRONIC COPY

LABORATORY GROWN DIAMOND REPORT

September 8, 2022
 IGI Report Number **LG546217732**
 Description **LABORATORY GROWN
DIAMOND**
 Shape and Cutting Style **MARQUISE BRILLIANT**
 Measurements **11.99 X 6.15 X 3.72 MM**

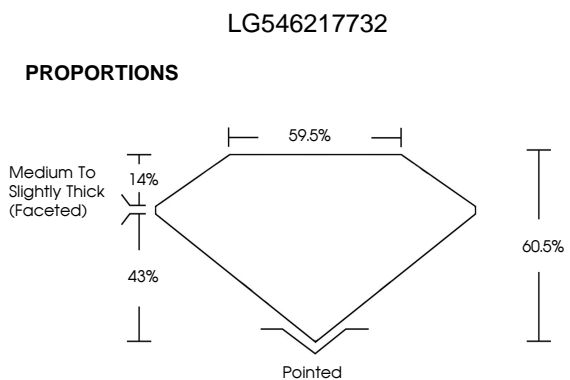
GRADING RESULTS

Carat Weight **1.53 CARAT**
 Color Grade **G**
 Clarity Grade **VS 1**

ADDITIONAL GRADING INFORMATION

Polish **EXCELLENT**
 Symmetry **EXCELLENT**
 Fluorescence **NONE**
 Inscription(s) **LABGROWN IGI LG546217732**
 Comments: This Laboratory Grown Diamond was created by Chemical Vapor Deposition (CVD) growth process and may include post-growth treatment. Type IIa

September 8, 2022
 IGI Report Number **LG546217732**
 Description **LABORATORY GROWN
DIAMOND**
 Shape and Cutting Style **MARQUISE BRILLIANT**
 Measurements **11.99 X 6.15 X 3.72 MM**
GRADING RESULTS
 Carat Weight **1.53 CARAT**
 Color Grade **G**
 Clarity Grade **VS 1**



GRADING SCALES

COLOR GRADING SCALE	CL	NC	FT	VLT	LT	
	COLORLESS D-F	NEAR COLORLESS G-J	FAINT K-M	VERY LIGHT N-R	LIGHT S-Z	
CLARITY (10x) GRADING SCALE	FL	IF	VVS	VS	SI	I
	FLAWLESS INTERNALLY FLAWLESS	VERY VERY SLIGHTLY INCLUDED	VERY SLIGHTLY INCLUDED	SLIGHTLY INCLUDED	INCLUDED	

CLARITY CHARACTERISTICS

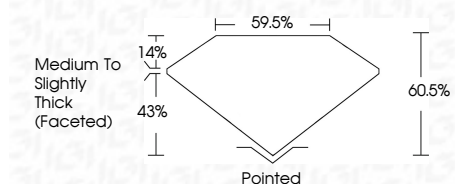


KEY TO SYMBOLS

Red symbols indicate internal characteristics.
 Green symbols indicate external characteristics.



LASERSCRIBESM
Sample Image Used



ADDITIONAL GRADING INFORMATION

Polish **EXCELLENT**
 Symmetry **EXCELLENT**
 Fluorescence **NONE**
 Inscription(s) **LABGROWN IGI LG546217732**
 Comments: This Laboratory Grown Diamond was created by Chemical Vapor Deposition (CVD) growth process and may include post-growth treatment. Type IIa



September 8, 2022
 IGI Report No LG546217732
MARQUISE BRILLIANT
 11.99 X 6.15 X 3.72 MM

Carat Weight **1.53 CARAT**
 Color Grade **G**
 Clarity Grade **VS 1**
 Depth **60.5%**
 Table **14%**
 Girdle **Medium To Slightly Thick (Faceted)**

Culet **Pointed**
 Polish **EXCELLENT**
 Symmetry **EXCELLENT**
 Fluorescence **NONE**
 Inscription(s) **LASERSCRIBE IGI LG546217732**
 Comments: **This Laboratory Grown Diamond was created by Chemical Vapor Deposition (CVD) growth process and may include post-growth treatment. Type IIa**