



**ELECTRONIC COPY**

## LABORATORY GROWN DIAMOND REPORT

April 4, 2022	
IGI Report Number	LG519246437
Description	LABORATORY GROWN DIAMOND
Shape and Cutting Style	SQUARE CUSHION BRILLIANT
Measurements	8.60 X 8.46 X 5.10 MM
GRADING RESULTS	
Carat Weight	2.55 CARATS
Color Grade	H
Clarity Grade	VS 1
ADDITIONAL GRADING INFORMATION	
Polish	EXCELLENT
Symmetry	EXCELLENT
Fluorescence	NONE
Inscription(s)	LABGROWN IGI LG519246437

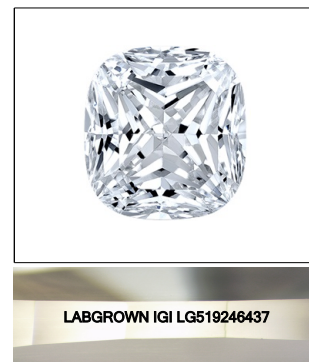
Comments: This Laboratory Grown Diamond was created by Chemical Vapor Deposition (CVD) growth process and may include post-growth treatment.  
Type IIa

**www.igi.org**

LABORATORY GROWN  
DIAMOND REPORT

## GRADING SCALES

COLOR GRADING SCALE	CL		NC	FT	VLT	LT
	COLORLESS D-F		NEAR COLORLESS G-J	FAINT K-M	VERY LIGHT N-R	LIGHT S-Z
CLARITY (10x) GRADING SCALE	FL	IF	VVS	VS	SI	I
	FLAWLESS INTERNALLY FLAWLESS		VERY VERY SLIGHTLY INCLUDED	VERY SLIGHTLY INCLUDED	SLIGHTLY INCLUDED	INCLUDED



**LASERSCRIBE<sup>SM</sup>**  
Sample Image Used

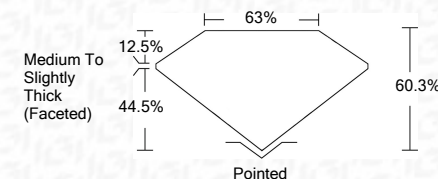


© IGI 2020, International Gemological Institute

FD - 10 20

## LABORATORY GROWN DIAMOND REPORT

April 4, 2022	
IGI Report Number	LG519246437
Description	LABORATORY GROWN DIAMOND
Shape and Cutting Style	SQUARE CUSHION BRILLIANT
Measurements	8.60 X 8.46 X 5.10 MM
GRADING RESULTS	
Carat Weight	2.55 CARATS
Color Grade	H
Clarity Grade	VS 1



### ADDITIONAL GRADING INFORMATION

Polish	EXCELLENT
Symmetry	EXCELLENT
Fluorescence	NONE
Inscription(s)	LABGROWN IGI LG519246437

Comments: This Laboratory Grown Diamond was created by Chemical Vapor Deposition (CVD) growth process and may include post-growth treatment.  
Type IIa



April 4, 2022	IGI Report No LG51924637	SQUARE CUSHION BRILLIANT	2.55 CARATS	H	VS 1	60.3%	83%	Medium to Slightly Thick (Faceted)	Polished	EXCELLENT	EXCELLENT	NONE	LARGROWN IGI LG51924637	Comments:	This Laboratory Growth Diamond was created by Chemical Vapor Deposition (CVD) growth process and may include post-growth treatments.
		Carat Weight	6.60 X 6.45 X 5.10 MM	Color Grade	Clarity Grade	Depth	Table	Grade	Culet	Polish	Symmetry	Fluorescence	Inscriptions(s)		Type Ila