



INTERNATIONAL  
GEMOLOGICAL  
INSTITUTE

ELECTRONIC COPY

LG407963892

LABORATORY GROWN DIAMOND REPORT

EDUCATIONAL AND SCIENTIFIC LABORATORY  
FOR THE IDENTIFICATION AND GRADING  
OF DIAMONDS AND COLORED STONES

GRADING SCALES

| COLOR<br>GRADING<br>SCALE         | CL                                 |    | NC                                |  | FT                           | VLT                  |  | LT           |
|-----------------------------------|------------------------------------|----|-----------------------------------|--|------------------------------|----------------------|--|--------------|
|                                   | COLORLESS<br>D-F                   |    | NEAR<br>COLORLESS<br>G-J          |  | FAINT<br>K-M                 | VERY LIGHT<br>N-R    |  | LIGHT<br>S-Z |
| CLARITY (10x)<br>GRADING<br>SCALE | FL                                 | IF | VVS                               |  | VS                           | SI                   |  | I            |
|                                   | FLAWLESS<br>INTERNALLY<br>FLAWLESS |    | VERY VERY<br>SLIGHTLY<br>INCLUDED |  | VERY<br>SLIGHTLY<br>INCLUDED | SLIGHTLY<br>INCLUDED |  | INCLUDED     |

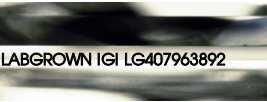
The laboratory grown diamond described in this Report (Report) has been graded, tested, analyzed, examined and/or inscribed by International Gemological Institute (IGI). A laboratory grown diamond is one that has essentially the same chemical, physical and optical properties as a mined diamond, with the exception of being grown by man (a manufactured product). IGI employs and utilizes those techniques and equipment currently available to IGI, including, without limitation, 10X magnification, corrected triplet loupe, binocular microscope, master color comparison stones, non-contact-optical measuring device, Diamond Sure™, Diamond View™, Spectrophotometer and such other instruments and/or processes as deemed appropriate by IGI. This Report includes advanced security features. A duly accredited gemologist or jeweler can advise you with respect to the importance of and interrelationship between cut, color, clarity and carat weight.

**THIS REPORT IS NEITHER A GUARANTEE, VALUATION, NOR APPRAISAL OF THE GEMSTONE DESCRIBED HEREIN. PLEASE REVIEW THE LIMITATIONS AND RESTRICTIONS SET FORTH ONLINE. FOR ADDITIONAL INFORMATION, IMPORTANT LIMITATIONS AND DISCLAIMERS, PLEASE GO TO WWW.IGI.ORG OR CALL 1-888-BUY-IGIS.**

© INTERNATIONAL GEMOLOGICAL INSTITUTE, INC.



PHOTO ENLARGED

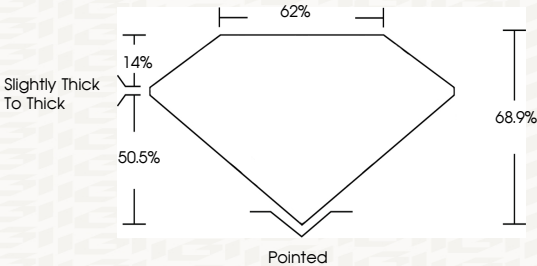


LASERSCRIBE SM

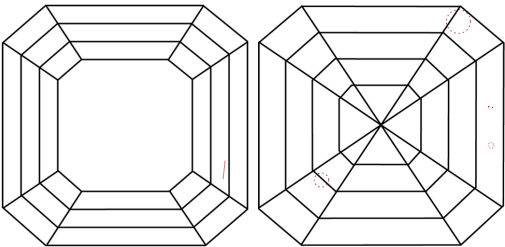


ADDITIONAL INFORMATION

PROPORTIONS



CLARITY CHARACTERISTICS



KEY TO SYMBOLS

Red symbols indicate internal characteristics.  
Green symbols indicate external characteristics.

This Report is subject to the terms and conditions

© IGI 2000, edition 2019 all rights reserved.

IGI LABORATORY GROWN DIAMOND GRADING  
REPORT

01/22/2020

IGI Report Number LG407963892

Shape and Cutting Style SQUARE EMERALD CUT

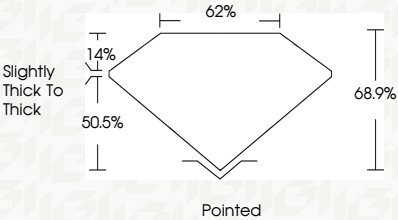
Measurements 7.81 X 7.72 X 5.32 MM

GRADING RESULTS

Carat Weight 3.00 CARATS

Color Grade F

Clarity Grade VS 2



ADDITIONAL GRADING INFORMATION

Polish EXCELLENT

Symmetry EXCELLENT

Fluorescence NONE

Inscription(s) LABGROWN IGI LG407963892

Comments: This Chemical Vapor Deposition (CVD) laboratory grown diamond is classified as Type IIa



IGI

|  |                       |  |             |  |               |  |       |  |       |  |        |  |                         |  |         |  |           |  |              |  |                 |  |                          |  |   |  |
|--|-----------------------|--|-------------|--|---------------|--|-------|--|-------|--|--------|--|-------------------------|--|---------|--|-----------|--|--------------|--|-----------------|--|--------------------------|--|---|--|
| 01/22/2020<br>IGI Report No. LG407963892<br>SQUARE EMERALD CUT | 7.81 X 7.72 X 5.32 MM |  | 3.00 CARATS |  | F             |  | VS 2  |  | 68.9% |  | 62%    |  | Slightly Thick To Thick |  | Pointed |  | EXCELLENT |  | EXCELLENT    |  | NONE            |  | LABGROWN IGI LG407963892 |  | Comments: This Chemical Vapor Deposition (CVD) laboratory grown diamond is classified as Type IIa |  |
|  | Carat Weight          |  | Color Grade |  | Clarity Grade |  | Depth |  | Table |  | Girdle |  | Culet                   |  | Polish  |  | Symmetry  |  | Fluorescence |  | Inscriptions(s) |  |                          |  |   |  |
|  |                       |  |             |  |               |  |       |  |       |  |        |  |                         |  |         |  |           |  |              |  |                 |  |                          |  |   |  |
|  |                       |  |             |  |               |  |       |  |       |  |        |  |                         |  |         |  |           |  |              |  |                 |  |                          |  |   |  |
|  |                       |  |             |  |               |  |       |  |       |  |        |  |                         |  |         |  |           |  |              |  |                 |  |                          |  |   |  |
|  |                       |  |             |  |               |  |       |  |       |  |        |  |                         |  |         |  |           |  |              |  |                 |  |                          |  |   |  |
|  |                       |  |             |  |               |  |       |  |       |  |        |  |                         |  |         |  |           |  |              |  |                 |  |                          |  |   |  |
|  |                       |  |             |  |               |  |       |  |       |  |        |  |                         |  |         |  |           |  |              |  |                 |  |                          |  |   |  |
|  |                       |  |             |  |               |  |       |  |       |  |        |  |                         |  |         |  |           |  |              |  |                 |  |                          |  |   |  |
|  |                       |  |             |  |               |  |       |  |       |  |        |  |                         |  |         |  |           |  |              |  |                 |  |                          |  |   |  |
|  |                       |  |             |  |               |  |       |  |       |  |        |  |                         |  |         |  |           |  |              |  |                 |  |                          |  |   |  |