



ELECTRONIC COPY

LABORATORY GROWN DIAMOND REPORT

November 23, 2022	
IGI Report Number	LG557213022
Description	LABORATORY GROWN DIAMOND
Shape and Cutting Style	CUT CORNERED RECTANGULAR MODIFIED BRILLIANT
Measurements	9.92 X 7.12 X 4.87 MM

GRADING RESULTS

Carat Weight	3.00 CARATS
Color Grade	G
Clarity Grade	VS 1

ADDITIONAL GRADING INFORMATION

Polish	EXCELLENT
Symmetry	EXCELLENT
Fluorescence	NONE

Inscription(s) LABGROWN LG557213022

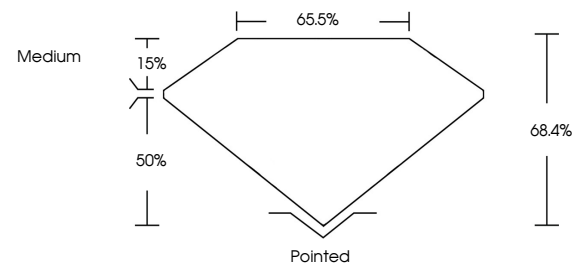
Comments: This Laboratory Grown Diamond was created by Chemical Vapor Deposition (CVD) growth process and may include post-growth treatment.
Type IIa

LABORATORY GROWN DIAMOND REPORT

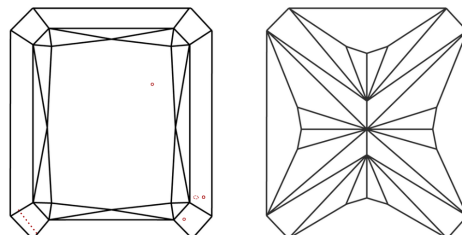
LG557213022

Report verification at igi.org

PROPORTIONS



CLARITY CHARACTERISTICS



KEY TO SYMBOLS

Red symbols indicate internal characteristics.
Green symbols indicate external characteristics.

LABORATORY GROWN
DIAMOND REPORT

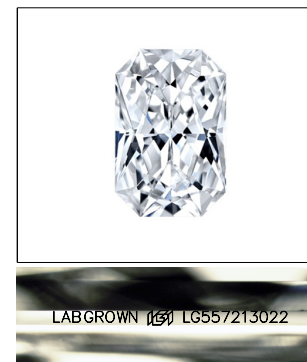
GRADING SCALES

CLARITY

IF	VVS ¹⁻²	VS ¹⁻²	SI ¹⁻²	I ¹⁻³
Internally Flawless	Very Very Slightly Included	Very Slightly Included	Slightly Included	Included

COLOR

D E F G H I J Faint Very Light Light

LASERSCRIBESM

Sample Image Used



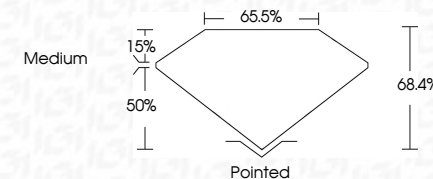
© IGI 2020, International Gemological Institute

FD - 10 20

www.igi.org

LABORATORY GROWN DIAMOND REPORT

November 23, 2022	
IGI Report Number	LG557213022
Description	LABORATORY GROWN DIAMOND
Shape and Cutting Style	CUT CORNERED RECTANGULAR MODIFIED BRILLIANT
Measurements	9.92 X 7.12 X 4.87 MM
GRADING RESULTS	
Carat Weight	3.00 CARATS
Color Grade	G
Clarity Grade	VS 1



ADDITIONAL GRADING INFORMATION

Polish	EXCELLENT
Symmetry	EXCELLENT
Fluorescence	NONE
Inscription(s)	LABGROWN (157) LG557213022

Comments: This Laboratory Grown Diamond was created by Chemical Vapor Deposition (CVD) growth process and may include post-growth treatment.
Type IIa



November 23, 2022	November 23, 2022	November 23, 2022
CU REPORT NO. GS6713022	CU REPORT NO. GS6713022	CU REPORT NO. GS6713022
GIT CORNERED RECT. MODIFIED BRILLIANT	GIT CORNERED RECT. MODIFIED BRILLIANT	GIT CORNERED RECT. MODIFIED BRILLIANT
9.92 X 7.12 X 4.87 MM	9.92 X 7.12 X 4.87 MM	9.92 X 7.12 X 4.87 MM
Carat Weight	Carat Weight	Carat Weight
Color Grade	Color Grade	Color Grade
Clarity Grade	Clarity Grade	Clarity Grade
Depth	Depth	Depth
Table	Table	Table
Girdle	Girdle	Girdle
Culet	Culet	Culet
Polish	Polish	Polish
Symmetry	Symmetry	Symmetry
Fluorescence	Fluorescence	Fluorescence
Inscription(s)	Inscription(s)	Inscription(s)
None	None	None
LaserScan® (g)	LaserScan® (g)	LaserScan® (g)
IGS67213022	IGS67213022	IGS67213022
Comments:	Comments:	Comments:
This Laboratory Grown Diamond was created by Chemical Vapor Deposition (CVD) growth process and may include some treatment.	This Laboratory Grown Diamond was created by Chemical Vapor Deposition (CVD) growth process and may include some treatment.	This Laboratory Grown Diamond was created by Chemical Vapor Deposition (CVD) growth process and may include some treatment.
Type IId	Type IId	Type IId