



ELECTRONIC COPY

LABORATORY GROWN DIAMOND REPORT

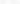
| | |
|-------------------------|--|
| November 30, 2022 | |
| IGI Report Number | LG557249964 |
| Description | LABORATORY GROWN DIAMOND |
| Shape and Cutting Style | CUT CORNERED RECTANGULAR MODIFIED BRILLIANT |
| Measurements | 9.06 X 6.46 X 4.37 MM |

GRADING RESULTS

| | |
|---------------|-------------|
| Carat Weight | 2.23 CARATS |
| Color Grade | F |
| Clarity Grade | VS 1 |

ADDITIONAL GRADING INFORMATION

| | |
|--------------|-----------|
| Polish | EXCELLENT |
| Symmetry | EXCELLENT |
| Fluorescence | NONE |

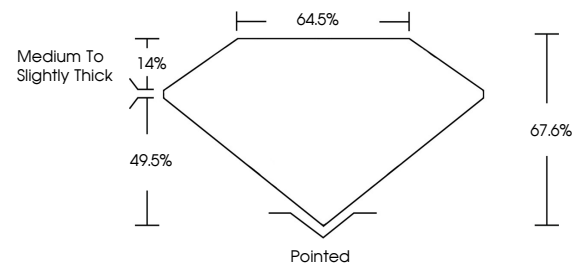
Inscription(s) **LABGROWN  LG557249964**
 Comments: This Laboratory Grown Diamond was created by Chemical Vapor Deposition (CVD) growth process and may include post-growth treatment.
 Type IIa

LABORATORY GROWN DIAMOND REPORT

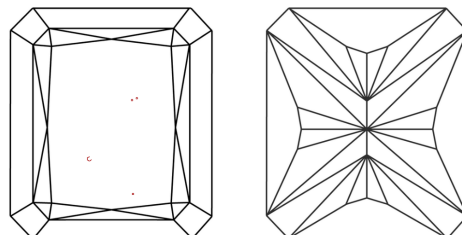
LG557249964

Report verification at igi.org

PROPORTIONS



CLARITY CHARACTERISTICS



KEY TO SYMBOLS

Red symbols indicate internal characteristics.
Green symbols indicate external characteristics.

LABORATORY GROWN
DIAMOND REPORT

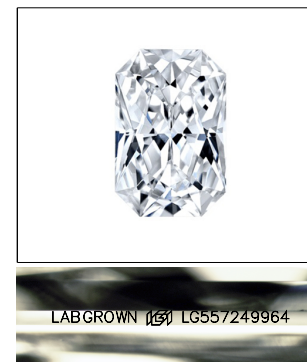
GRADING SCALES

CLARITY

| IF | VVS ¹⁻² | VS ¹⁻² | SI ¹⁻² | I ¹⁻³ |
|------------------------|--------------------------------|---------------------------|----------------------|------------------|
| Internally Flawless | Very Very Slightly Included | Very Slightly Included | Slightly Included | Included |

COLOR

D E F G H I J Faint Very Light Light

LASERSCRIBESM

Sample Image Used



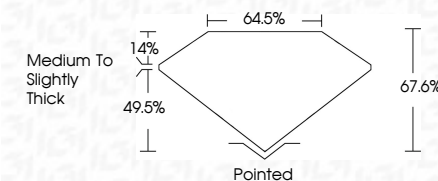
© IGI 2020, International Gemological Institute

FD - 10 20

www.igi.org

LABORATORY GROWN DIAMOND REPORT

| | |
|-------------------------|---|
| November 30, 2022 | |
| IGI Report Number | LG557249964 |
| Description | LABORATORY GROWN DIAMOND |
| Shape and Cutting Style | CUT CORNERED RECTANGULAR MODIFIED BRILLIANT |
| Measurements | 9.06 X 6.46 X 4.37 MM |
| GRADING RESULTS | |
| Carat Weight | 2.23 CARATS |
| Color Grade | F |
| Clarity Grade | VS 1 |



ADDITIONAL GRADING INFORMATION

| | |
|----------------|----------------------------|
| Polish | EXCELLENT |
| Symmetry | EXCELLENT |
| Fluorescence | NONE |
| Inscription(s) | LABGROWN (157) LG557249964 |

Comments: This Laboratory Grown Diamond was created by Chemical Vapor Deposition (CVD) growth process and may include post-growth treatment.
Type IIa



| | | |
|---|---------------------------|--------------------------|
| November 30, 2022 | IGI REPORT NO. G567249954 | 2.23 CARATS |
| CU CUT CORNERED RECT. MODIFIED BRILLIANT | | |
| 9.05 X 6.46 X 4.37 MM | | |
| Color: Weight | Color: Grade | Clarity: Grade |
| | | Vs1 |
| | | 67.6% |
| | | 64.5% |
| | | Medium to Slightly Thick |
| | | Pointed |
| | | EXCELLENT |
| | | EXCELLENT |
| | | NONE |
| | | LAB-GROWN (GSI) |
| | | G567249954 |
| Comments: | | |
| This Laboratory Grown Diamond was grown using a CVD growth process and may include post-growth treatment. | | |
| pa 11g | | |