



**ELECTRONIC COPY**

## LABORATORY GROWN DIAMOND REPORT

October 6, 2022

IGI Report Number **LG549219372**

Description **LABORATORY GROWN  
DIAMOND**

Shape and Cutting Style **OVAL BRILLIANT**

Measurements 9.89 X 6.86 X 4.33 MM

## GRADING RESULTS

Carat Weight 1.80 CARAT

Color Grade GClarity Grade WS 2

### ADDITIONAL GRADING INFORMATION

Polish EXCELLENT

Symmetry **EXCELLENT**

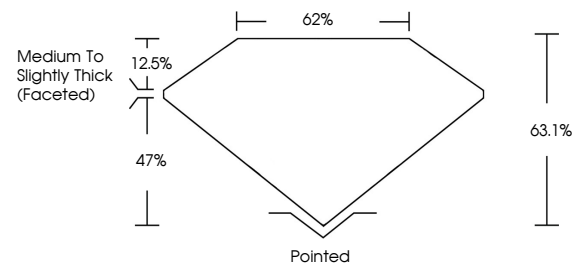
Fluorescence **NONE**

Inscription(s) LABGROWN IGI LG549219372

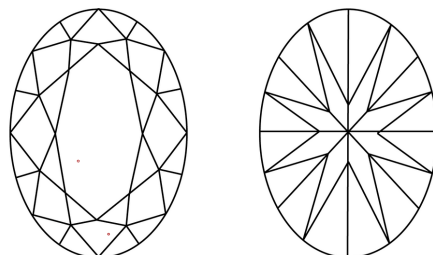
Comments: This Laboratory Grown Diamond was created by Chemical Vapor Deposition (CVD) growth process and may include post-growth treatment.  
Type IIa

LG549219372

## PROPORTIONS



## CLARITY CHARACTERISTICS

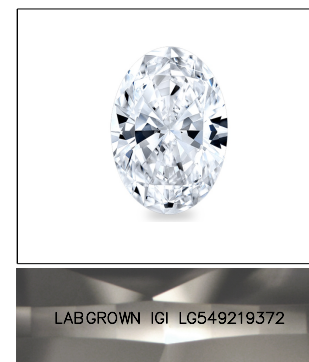


### KEY TO SYMBOLS

Red symbols indicate internal characteristics.  
Green symbols indicate external characteristics.

## GRADING SCALES

COLOR GRADING SCALE	CL		NC	FT	VLT	LT
	COLORLESS D-F		NEAR COLORLESS G-J	FAINT K-M	VERY LIGHT N-R	LIGHT S-Z
CLARITY (10x) GRADING SCALE	FL	IF	VVS	VS	SI	I
	FLAWLESS INTERNALLY FLAWLESS		VERY VERY SLIGHTLY INCLUDED	VERY SLIGHTLY INCLUDED	SLIGHTLY INCLUDED	INCLUDED

LASERSCRIBE<sup>SM</sup>

Sample Image Used



© IGI 2020, International Gemological Institute

FD - 10 20

LABORATORY GROWN DIAMOND REPORT

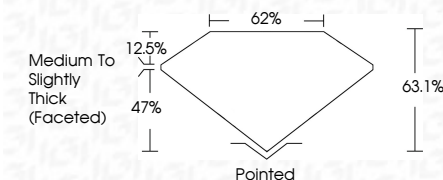
October 6, 2022	
IGI Report Number	LG549219372
Description	LABORATORY GROWN

Shape and Cutting Style **OVAL BRILLIANT**

Measurements 9.89 X 6.86 X 4.33 MM

## GRADING RESULTS

Carat Weight **1.80 CARAT**

Color Grade GClarity Grade VVS 2

### ADDITIONAL GRADING INFORMATION

Polish **EXCELLENT**Symmetry **EXCELLENT**Fluorescence **NONE**

Inscription(s) LABGROWN IGI LG549219372

Comments: This Laboratory Grown Diamond was created by Chemical Vapor Deposition (CVD) growth process and may include post-growth treatment.  
Type IIa



October 6, 2022	GI Report No. LGS46219372	1.80 CARAT	
	GI VAL BRILLIANT	G	
	WT 89.89 X 66.6 X 43.3 MM	WVS 2	
		63.1%	
		66%	
		Medium to Slightly Thick (faceted)	
		Pointed	
		EXCELLENT	
		EXCELLENT	
		NONE	
		LARGESCAN LSI	
		LGS46219372	
		Comments:	
		This Laboratory Grown Diamond was created by Chemical Vapor Deposition (CVD) growth process and may include post-growth treatment.	
		Type IIC	