



ELECTRONIC COPY

LABORATORY GROWN DIAMOND REPORT

| | |
|-------------------------|-----------------------------|
| October 17, 2022 | |
| IGI Report Number | LG551212769 |
| Description | LABORATORY GROWN DIAMOND |
| Shape and Cutting Style | OVAL BRILLIANT |
| Measurements | 10.67 X 7.48 X 4.53 MM |

GRADING RESULTS

| | |
|---------------|-------------|
| Carat Weight | 2.20 CARATS |
| Color Grade | F |
| Clarity Grade | VS 1 |

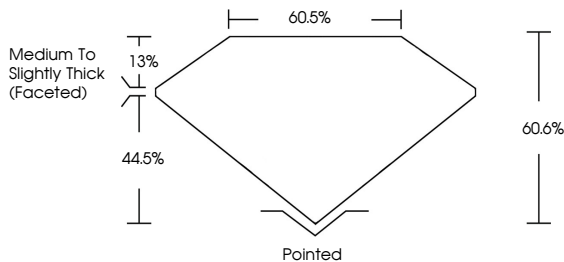
ADDITIONAL GRADING INFORMATION

| | |
|--------------|-----------|
| Polish | EXCELLENT |
| Symmetry | EXCELLENT |
| Fluorescence | NONE |

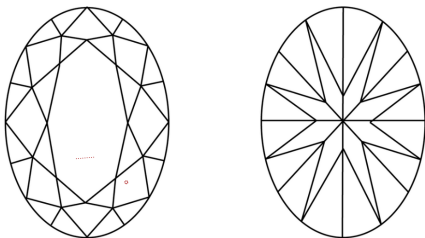
Inscription(s) **LABGROWN  LG551212769**
 Comments: This Laboratory Grown Diamond was created by Chemical Vapor Deposition (CVD) growth process and may include post-growth treatment.
 Type IIa

LG551212769

PROPORTIONS



CLARITY CHARACTERISTICS

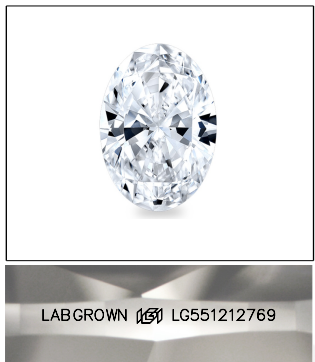


KEY TO SYMBOLS

Red symbols indicate internal characteristics.
Green symbols indicate external characteristics.

GRADING SCALES

| | | | | | | |
|-----------------------------|------------------------------|----|-----------------------------|------------------------|-------------------|-----------|
| COLOR GRADING SCALE | CL | | NC | FT | VLT | LT |
| | COLORLESS D-F | | NEAR COLORLESS G-J | FAINT K-M | VERY LIGHT N-R | LIGHT S-Z |
| CLARITY (10x) GRADING SCALE | FL | IF | VVS | VS | SI | I |
| | FLAWLESS INTERNALLY FLAWLESS | | VERY VERY SLIGHTLY INCLUDED | VERY SLIGHTLY INCLUDED | SLIGHTLY INCLUDED | INCLUDED |

**LASERSCRIBESM**

Sample Image Used



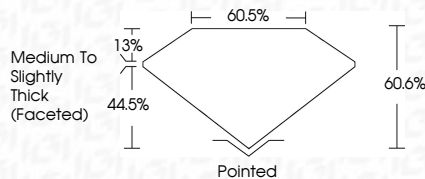
© IGI 2020, International Gemological Institute

FD - 10 20

www.igi.org

LABORATORY GROWN DIAMOND REPORT

| | |
|-------------------------|-----------------------------|
| October 17, 2022 | |
| IGI Report Number | LG551212769 |
| Description | LABORATORY GROWN DIAMOND |
| Shape and Cutting Style | OVAL BRILLIANT |
| Measurements | 10.67 X 7.48 X 4.53 MM |
| GRADING RESULTS | |
| Carat Weight | 2.20 CARATS |
| Color Grade | F |
| Clarity Grade | VS 1 |



ADDITIONAL GRADING INFORMATION

| | |
|----------------|--------------------------|
| Polish | EXCELLENT |
| Symmetry | EXCELLENT |
| Fluorescence | NONE |
| Inscription(s) | LABGROWN (5) LG551212769 |

Comments: This Laboratory Grown Diamond was created by Chemical Vapor Deposition (CVD) growth process and may include post-growth treatment.
Type IIa



IGI

| | | | | | | | | | | | | | | |
|--------------------------|------------------------|---------------|---------------|--------------|------|-------|-------|--------------------------|----------|-----------|-----------|------|---------------------------|-----------|
| G1 Report No. US56121769 | 0.067 X 7.48 X 4.63 MM | | 2.20 CARATS | F | VS 1 | 60.6% | 60.6% | Medium to Slightly Thick | Polished | EXCELLENT | EXCELLENT | NONE | LAGSDIN 169 US56121769 | Comments: |
| | Color Grade | Clarity Grade | Carat Weight | | | | | | | | | | | |
| October 17, 2022 | 0.067 X 7.48 X 4.63 MM | Color Grade | Clarity Grade | Carat Weight | VS 1 | 60.6% | 60.6% | Medium to Slightly Thick | Polished | EXCELLENT | EXCELLENT | NONE | LAGSDIN 169 US56121769 | Comments: |

This Laboratory Grown Diamond was created by Chemical Vapor Deposition (CVD) growth process and may include post-growth treatment.