

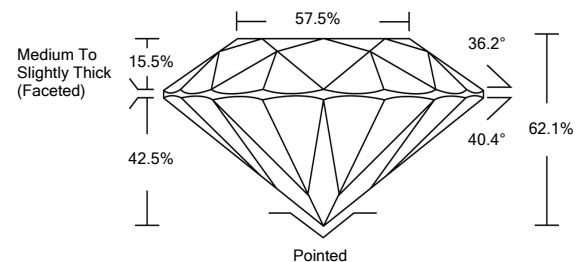


ELECTRONIC COPY

LABORATORY GROWN DIAMOND REPORT

LG529280505

PROPORTIONS



GRADING SCALES

COLOR GRADING SCALE	CL	NC	FT	VL	LT	
	COLORLESS D-F	NEAR COLORLESS G-J	FAINT K-M	VERY LIGHT N-R	LIGHT S-Z	
CLARITY (10x) GRADING SCALE	FL	IF	VVS	VS	SI	I
	FLAWLESS INTERNALLY FLAWLESS	VERY VERY SLIGHTLY INCLUDED	VERY SLIGHTLY INCLUDED	SLIGHTLY INCLUDED	INCLUDED	

May 18, 2022
 IGI Report Number **LG529280505**
 Description **LABORATORY GROWN DIAMOND**
 Shape and Cutting Style **ROUND BRILLIANT**
 Measurements **10.81 - 10.91 X 6.75 MM**

GRADING RESULTS

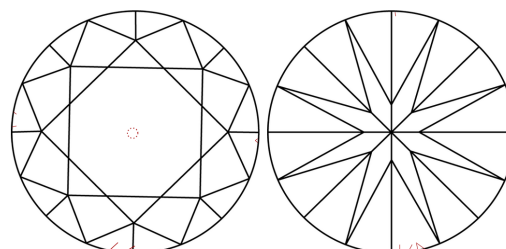
Carat Weight **5.00 CARATS**
 Color Grade **F**
 Clarity Grade **VS 2**
 Cut Grade **IDEAL**

ADDITIONAL GRADING INFORMATION

Polish **EXCELLENT**
 Symmetry **EXCELLENT**
 Fluorescence **NONE**
 Inscription(s) **LABGROWN IGI LG529280505**

Comments: HEARTS & ARROWS
 This Laboratory Grown Diamond was created by Chemical Vapor Deposition (CVD) growth process and may include post-growth treatment.
 Type IIa

CLARITY CHARACTERISTICS

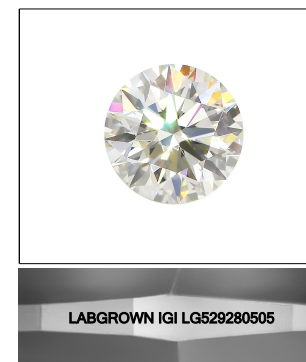


KEY TO SYMBOLS

Red symbols indicate internal characteristics.
 Green symbols indicate external characteristics.



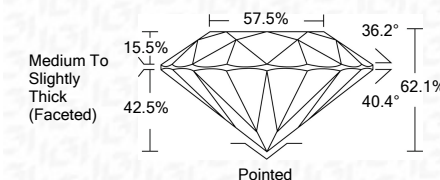
www.igi.org



LASERSCRIBESM

Sample Image Used

May 18, 2022
 IGI Report Number **LG529280505**
 Description **LABORATORY GROWN DIAMOND**
 Shape and Cutting Style **ROUND BRILLIANT**
 Measurements **10.81 - 10.91 X 6.75 MM**
GRADING RESULTS
 Carat Weight **5.00 CARATS**
 Color Grade **F**
 Clarity Grade **VS 2**
 Cut Grade **IDEAL**



ADDITIONAL GRADING INFORMATION

Polish **EXCELLENT**
 Symmetry **EXCELLENT**
 Fluorescence **NONE**
 Inscription(s) **LABGROWN IGI LG529280505**

Comments: HEARTS & ARROWS
 This Laboratory Grown Diamond was created by Chemical Vapor Deposition (CVD) growth process and may include post-growth treatment.
 Type IIa



IGI

May 18, 2022	IGI Report No. LG529280505	5.00 CARATS	F	Pointed
ROUND BRILLIANT	10.81 - 10.91 X 6.75 MM	VS 2	IDEAL	EXCELLENT
Carat Weight	10.81 - 10.91 X 6.75 MM	Depth	62.1%	EXCELLENT
Color Grade	5.00 CARATS	Table	15.5%	NONE
Clarity Grade	VS 2	Girdle	Medium To Slightly Thick (Faceted)	LABGROWN IGI LG529280505
Cut Grade	IDEAL	Culet	Pointed	
Depth	62.1%	Polish	EXCELLENT	
Table	15.5%	Symmetry	EXCELLENT	
Girdle	Medium To Slightly Thick (Faceted)	Fluorescence	NONE	
Culet	Pointed	Inscription(s)	LABGROWN IGI LG529280505	
Polish	EXCELLENT	Comments:	HEARTS & ARROWS This Laboratory Grown Diamond was created by Chemical Vapor Deposition (CVD) growth process and may include post-growth treatment. Type IIa	
Symmetry	EXCELLENT			
Fluorescence	NONE			
Inscription(s)	LABGROWN IGI LG529280505			

