



ELECTRONIC COPY

LABORATORY GROWN DIAMOND REPORT

November 15, 2022	
IGI Report Number	LG555266144
Description	LABORATORY GROWN DIAMOND
Shape and Cutting Style	CUT CORNERED RECTANGULAR MODIFIED BRILLIANT
Measurements	9.86 X 7.07 X 4.97 MM

GRADING RESULTS

Carat Weight	3.00 CARATS
Color Grade	F
Clarity Grade	VS 1

ADDITIONAL GRADING INFORMATION

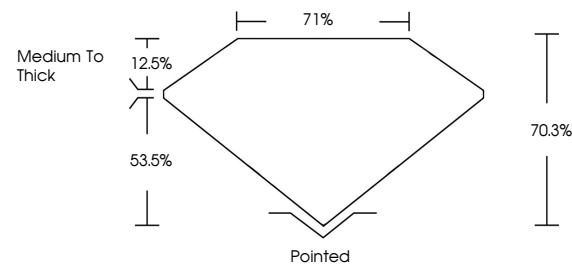
Polish	EXCELLENT
Symmetry	EXCELLENT
Fluorescence	NONE

Inscription(s) LABGROWN LG555266144

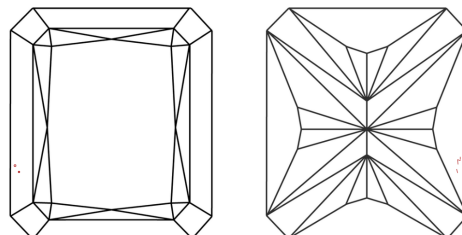
Comments: This Laboratory Grown Diamond was created by Chemical Vapor Deposition (CVD) growth process and may include post-growth treatment.
Type IIa

LG555266144

PROPORTIONS



CLARITY CHARACTERISTICS

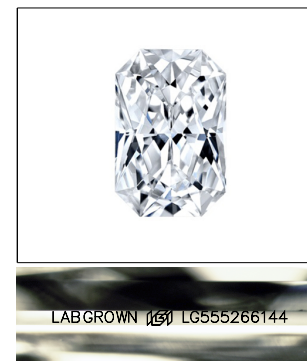


KEY TO SYMBOLS

Red symbols indicate internal characteristics.
Green symbols indicate external characteristics.

GRADING SCALES

COLOR GRADING SCALE	CL		NC		FT		VLT		LT	
	COLORLESS D-F		NEAR COLORLESS G-J		FAINT K-M		VERY LIGHT N-R		LIGHT S-Z	
CLARITY (10x) GRADING SCALE	FL IF		VVS		VS		SI		I	
	FLAWLESS INTERNALLY FLAWLESS		VERY VERY SLIGHTLY INCLUDED		VERY SLIGHTLY INCLUDED		SLIGHTLY INCLUDED		INCLUDED	

LASERSCRIBESM

Sample Image Used



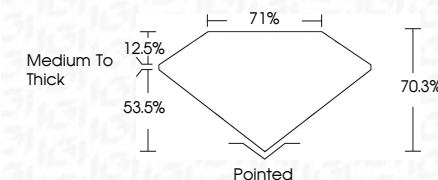
© IGI 2020, International Gemological Institute

FD - 10 20

www.igi.org

LABORATORY GROWN DIAMOND REPORT

November 15, 2022	
IGI Report Number	LG555266144
Description	LABORATORY GROWN DIAMOND
Shape and Cutting Style	CUT CORNERED RECTANGULAR MODIFIED BRILLIANT
Measurements	9.86 X 7.07 X 4.97 MM
GRADING RESULTS	
Carat Weight	3.00 CARATS
Color Grade	F
Clarity Grade	VS 1



ADDITIONAL GRADING INFORMATION

Polish	EXCELLENT
Symmetry	EXCELLENT
Fluorescence	NONE
Inscription(s)	LABGROWN (16) LG555266144

Comments: This Laboratory Grown Diamond was created by Chemical Vapor Deposition (CVD) growth process and may include post-growth treatment.
Type IIa



November 15, 2022	STU Report No. LGS55263144	3.00 CARATS	Vs 1	Polished	Excellent	LARGROWN (LGS55263144)	<p>Comments: This Gem Group Diamond was identified by Chemical Vapor Deposition (CVD) growth process and may include post-growth treatment. Type Iia</p>
STU Contained RECT. MODIFIED	3.06 x 3.07 x 4.97 MM	Color: Weight	70.3%	Excellent	Excellent	NONE	
			71%				
				Medium To Thick			