



**ELECTRONIC COPY**

**LABORATORY GROWN DIAMOND REPORT**

April 23, 2022  
 IGI Report Number **LG523205627**  
 Description **LABORATORY GROWN  
DIAMOND**  
 Shape and Cutting Style **CUSHION BRILLIANT**  
 Measurements **8.72 X 7.07 X 4.56 MM**

**GRADING RESULTS**

Carat Weight **2.05 CARATS**  
 Color Grade **E**  
 Clarity Grade **VS 1**

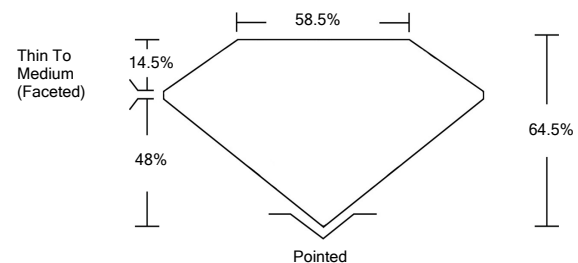
**ADDITIONAL GRADING INFORMATION**

Polish **EXCELLENT**  
 Symmetry **EXCELLENT**  
 Fluorescence **NONE**  
 Inscription(s) **LABGROWN IGI LG523205627**

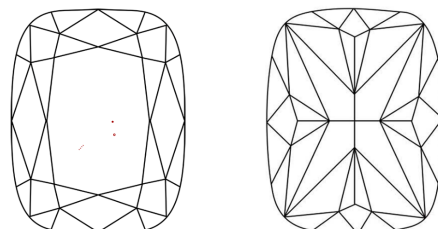
Comments: This Laboratory Grown Diamond was created by Chemical Vapor Deposition (CVD) growth process and may include post-growth treatment.  
 Type IIa

LG523205627

**PROPORTIONS**



**CLARITY CHARACTERISTICS**

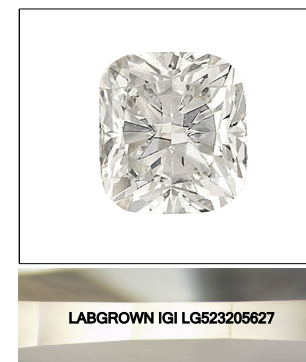


**KEY TO SYMBOLS**

Red symbols indicate internal characteristics.  
 Green symbols indicate external characteristics.

**GRADING SCALES**

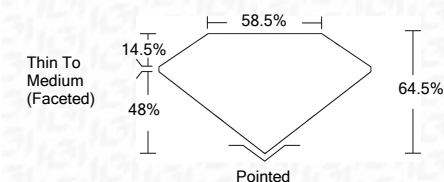
COLOR GRADING SCALE	CL	NC	FT	VL	LT	
	COLORLESS D-F	NEAR COLORLESS G-J	FAINT K-M	VERY LIGHT N-R	LIGHT S-Z	
CLARITY (10x) GRADING SCALE	FL	IF	VVS	VS	SI	I
	FLAWLESS INTERNALLY FLAWLESS	VERY VERY SLIGHTLY INCLUDED	VERY SLIGHTLY INCLUDED	SLIGHTLY INCLUDED	INCLUDED	



LASERSCRIBE<sup>SM</sup>

Sample Image Used

April 23, 2022  
 IGI Report Number **LG523205627**  
 Description **LABORATORY GROWN  
DIAMOND**  
 Shape and Cutting Style **CUSHION BRILLIANT**  
 Measurements **8.72 X 7.07 X 4.56 MM**  
**GRADING RESULTS**  
 Carat Weight **2.05 CARATS**  
 Color Grade **E**  
 Clarity Grade **VS 1**



**ADDITIONAL GRADING INFORMATION**

Polish **EXCELLENT**  
 Symmetry **EXCELLENT**  
 Fluorescence **NONE**  
 Inscription(s) **LABGROWN IGI LG523205627**

Comments: This Laboratory Grown Diamond was created by Chemical Vapor Deposition (CVD) growth process and may include post-growth treatment.  
 Type IIa



**IGI**

April 23, 2022  
 IGI Report No. **LG523205627**  
**CUSHION BRILLIANT**  
**8.72 X 7.07 X 4.56 MM**  
 Carat Weight **2.05 CARATS**  
 Color Grade **E**  
 Clarity Grade **VS 1**  
 Depth **64.5%**  
 Table **58.5%**  
 Girdle **Thin To Medium (Faceted)**  
 Culet **Pointed**  
 Polish **EXCELLENT**  
 Symmetry **EXCELLENT**  
 Fluorescence **NONE**  
 Inscription(s) **LABGROWN IGI LG523205627**  
 Comments:

This Laboratory Grown Diamond was created by Chemical Vapor Deposition (CVD) growth process and may include post-growth treatment.  
 Type IIa

