



ELECTRONIC COPY

LABORATORY GROWN DIAMOND REPORT

September 15, 2022	
IGI Report Number	LG542298605
Description	LABORATORY GROWN DIAMOND
Shape and Cutting Style	ROUND BRILLIANT
Measurements	7.72 - 7.75 X 4.56 MM

GRADING RESULTS

Carat Weight	1.67 CARAT
Color Grade	G
Clarity Grade	VS 2
Cut Grade	EXCELLENT

ADDITIONAL GRADING INFORMATION

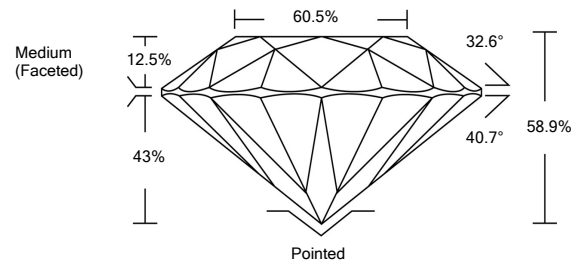
Polish	EXCELLENT
Symmetry	EXCELLENT
Fluorescence	NONE

Inscription(s) **LABGROWN IGI LG542298605**

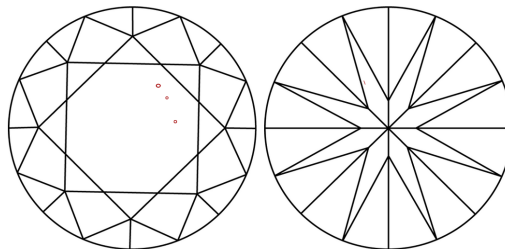
Comments: This Laboratory Grown Diamond was created by Chemical Vapor Deposition (CVD) growth process and may include post-growth treatment.

LG542298605

PROPORTIONS



CLARITY CHARACTERISTICS



KEY TO SYMBOLS

Red symbols indicate internal characteristics.
Green symbols indicate external characteristics.

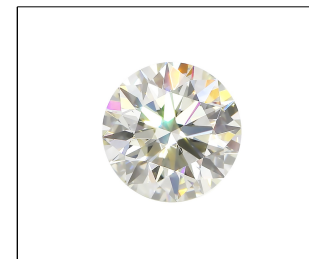
GRADING SCALES

COLOR GRADING SCALE	CL		NC		FT		VLT		LT	
	COLORLESS D-F		NEAR COLORLESS G-J		FAINT K-M		VERY LIGHT N-R		LIGHT S-Z	
CLARITY (10x) GRADING SCALE	FL IF		VVS		VS		SI		I	
	FLAWLESS INTERNALLY FLAWLESS		VERY VERY SLIGHTLY INCLUDED		VERY SLIGHTLY INCLUDED		SLIGHTLY INCLUDED		INCLUDED	

The laboratory growdiamond described in this Report (Report) has been graded, tested, analyzed, examined and/or inscribed by International Gemological Institute (IGI). A laboratory grown diamond is one that has essentially the same chemical, physical and optical properties as a mined diamond with the exception of being grown by man in a manufacturing process. IGI employs and utilizes those techniques and equipment currently available to IGI, including, without limitation, 10X magnification, corrected triplet loupe, binocular microscope, master color comparison stones, non-contact-optical methods, and/or other instruments and/or processes as deemed appropriate by IGI. This Report includes advanced security features. A duly accredited gemologist or jeweler can advise you with respect to the importance of and interrelationship between cut, color, clarity and carat weight.

THIS REPORT IS NEITHER A GUARANTEE, VALUATION, NOR APPRAISAL OF THE GEMSTONE DESCRIBED HEREIN. PLEASE REVIEW THE LIMITATIONS AND RESTRICTIONS SET FORTH ONLINE FOR THIS REPORT. IGI, IGL, IGLS, IGLOR, IGLORL, IGLORLH, IGLORLH2, IGLORLH3, IGLORLH4, IGLORLH5, IGLORLH6, IGLORLH7, IGLORLH8, IGLORLH9, IGLORLH10, IGLORLH11, IGLORLH12, IGLORLH13, IGLORLH14, IGLORLH15, IGLORLH16, IGLORLH17, IGLORLH18, IGLORLH19, IGLORLH20, IGLORLH21, IGLORLH22, IGLORLH23, IGLORLH24, IGLORLH25, IGLORLH26, IGLORLH27, IGLORLH28, IGLORLH29, IGLORLH30, IGLORLH31, IGLORLH32, IGLORLH33, IGLORLH34, IGLORLH35, IGLORLH36, IGLORLH37, IGLORLH38, IGLORLH39, IGLORLH40, IGLORLH41, IGLORLH42, IGLORLH43, IGLORLH44, IGLORLH45, IGLORLH46, IGLORLH47, IGLORLH48, IGLORLH49, IGLORLH50, IGLORLH51, IGLORLH52, IGLORLH53, IGLORLH54, IGLORLH55, IGLORLH56, IGLORLH57, IGLORLH58, IGLORLH59, IGLORLH60, IGLORLH61, IGLORLH62, IGLORLH63, IGLORLH64, IGLORLH65, IGLORLH66, IGLORLH67, IGLORLH68, IGLORLH69, IGLORLH70, IGLORLH71, IGLORLH72, IGLORLH73, IGLORLH74, IGLORLH75, IGLORLH76, IGLORLH77, IGLORLH78, IGLORLH79, IGLORLH80, IGLORLH81, IGLORLH82, IGLORLH83, IGLORLH84, IGLORLH85, IGLORLH86, IGLORLH87, IGLORLH88, IGLORLH89, IGLORLH90, IGLORLH91, IGLORLH92, IGLORLH93, IGLORLH94, IGLORLH95, IGLORLH96, IGLORLH97, IGLORLH98, IGLORLH99, IGLORLH100, IGLORLH101, IGLORLH102, IGLORLH103, IGLORLH104, IGLORLH105, IGLORLH106, IGLORLH107, IGLORLH108, IGLORLH109, IGLORLH110, IGLORLH111, IGLORLH112, IGLORLH113, IGLORLH114, IGLORLH115, IGLORLH116, IGLORLH117, IGLORLH118, IGLORLH119, IGLORLH120, IGLORLH121, IGLORLH122, IGLORLH123, IGLORLH124, IGLORLH125, IGLORLH126, IGLORLH127, IGLORLH128, IGLORLH129, IGLORLH130, IGLORLH131, IGLORLH132, IGLORLH133, IGLORLH134, IGLORLH135, IGLORLH136, IGLORLH137, IGLORLH138, IGLORLH139, IGLORLH140, IGLORLH141, IGLORLH142, IGLORLH143, IGLORLH144, IGLORLH145, IGLORLH146, IGLORLH147, IGLORLH148, IGLORLH149, IGLORLH150, IGLORLH151, IGLORLH152, IGLORLH153, IGLORLH154, IGLORLH155, IGLORLH156, IGLORLH157, IGLORLH158, IGLORLH159, IGLORLH160, IGLORLH161, IGLORLH162, IGLORLH163, IGLORLH164, IGLORLH165, IGLORLH166, IGLORLH167, IGLORLH168, IGLORLH169, IGLORLH170, IGLORLH171, IGLORLH172, IGLORLH173, IGLORLH174, IGLORLH175, IGLORLH176, IGLORLH177, IGLORLH178, IGLORLH179, IGLORLH180, IGLORLH181, IGLORLH182, IGLORLH183, IGLORLH184, IGLORLH185, IGLORLH186, IGLORLH187, IGLORLH188, IGLORLH189, IGLORLH190, IGLORLH191, IGLORLH192, IGLORLH193, IGLORLH194, IGLORLH195, IGLORLH196, IGLORLH197, IGLORLH198, IGLORLH199, IGLORLH200, IGLORLH201, IGLORLH202, IGLORLH203, IGLORLH204, IGLORLH205, IGLORLH206, IGLORLH207, IGLORLH208, IGLORLH209, IGLORLH210, IGLORLH211, IGLORLH212, IGLORLH213, IGLORLH214, IGLORLH215, IGLORLH216, IGLORLH217, IGLORLH218, IGLORLH219, IGLORLH220, IGLORLH221, IGLORLH222, IGLORLH223, IGLORLH224, IGLORLH225, IGLORLH226, IGLORLH227, IGLORLH228, IGLORLH229, IGLORLH230, IGLORLH231, IGLORLH232, IGLORLH233, IGLORLH234, IGLORLH235, IGLORLH236, IGLORLH237, IGLORLH238, IGLORLH239, IGLORLH240, IGLORLH241, IGLORLH242, IGLORLH243, IGLORLH244, IGLORLH245, IGLORLH246, IGLORLH247, IGLORLH248, IGLORLH249, IGLORLH250, IGLORLH251, IGLORLH252, IGLORLH253, IGLORLH254, IGLORLH255, IGLORLH256, IGLORLH257, IGLORLH258, IGLORLH259, IGLORLH260, IGLORLH261, IGLORLH262, IGLORLH263, IGLORLH264, IGLORLH265, IGLORLH266, IGLORLH267, IGLORLH268, IGLORLH269, IGLORLH270, IGLORLH271, IGLORLH272, IGLORLH273, IGLORLH274, IGLORLH275, IGLORLH276, IGLORLH277, IGLORLH278, IGLORLH279, IGLORLH280, IGLORLH281, IGLORLH282, IGLORLH283, IGLORLH284, IGLORLH285, IGLORLH286, IGLORLH287, IGLORLH288, IGLORLH289, IGLORLH290, IGLORLH291, IGLORLH292, IGLORLH293, IGLORLH294, IGLORLH295, IGLORLH296, IGLORLH297, IGLORLH298, IGLORLH299, IGLORLH300, IGLORLH301, IGLORLH302, IGLORLH303, IGLORLH304, IGLORLH305, IGLORLH306, IGLORLH307, IGLORLH308, IGLORLH309, IGLORLH310, IGLORLH311, IGLORLH312, IGLORLH313, IGLORLH314, IGLORLH315, IGLORLH316, IGLORLH317, IGLORLH318, IGLORLH319, IGLORLH320, IGLORLH321, IGLORLH322, IGLORLH323, IGLORLH324, IGLORLH325, IGLORLH326, IGLORLH327, IGLORLH328, IGLORLH329, IGLORLH330, IGLORLH331, IGLORLH332, IGLORLH333, IGLORLH334, IGLORLH335, IGLORLH336, IGLORLH337, IGLORLH338, IGLORLH339, IGLORLH340, IGLORLH341, IGLORLH342, IGLORLH343, IGLORLH344, IGLORLH345, IGLORLH346, IGLORLH347, IGLORLH348, IGLORLH349, IGLORLH350, IGLORLH351, IGLORLH352, IGLORLH353, IGLORLH354, IGLORLH355, IGLORLH356, IGLORLH357, IGLORLH358, IGLORLH359, IGLORLH360, IGLORLH361, IGLORLH362, IGLORLH363, IGLORLH364, IGLORLH365, IGLORLH366, IGLORLH367, IGLORLH368, IGLORLH369, IGLORLH370, IGLORLH371, IGLORLH372, IGLORLH373, IGLORLH374, IGLORLH375, IGLORLH376, IGLORLH377, IGLORLH378, IGLORLH379, IGLORLH380, IGLORLH381, IGLORLH382, IGLORLH383, IGLORLH384, IGLORLH385, IGLORLH386, IGLORLH387, IGLORLH388, IGLORLH389, IGLORLH390, IGLORLH391, IGLORLH392, IGLORLH393, IGLORLH394, IGLORLH395, IGLORLH396, IGLORLH397, IGLORLH398, IGLORLH399, IGLORLH400, IGLORLH401, IGLORLH402, IGLORLH403, IGLORLH404, IGLORLH405, IGLORLH406, IGLORLH407, IGLORLH408, IGLORLH409, IGLORLH410, IGLORLH411, IGLORLH412, IGLORLH413, IGLORLH414, IGLORLH415, IGLORLH416, IGLORLH417, IGLORLH418, IGLORLH419, IGLORLH420, IGLORLH421, IGLORLH422, IGLORLH423, IGLORLH424, IGLORLH425, IGLORLH426, IGLORLH427, IGLORLH428, IGLORLH429, IGLORLH430, IGLORLH431, IGLORLH432, IGLORLH433, IGLORLH434, IGLORLH435, IGLORLH436, IGLORLH437, IGLORLH438, IGLORLH439, IGLORLH440, IGLORLH4

© INTERNATIONAL GEMOLOGICAL INSTITUTE, INC.



LABGROWN IGI LG542298605

LASERSCRIBESM

Sample Image Used

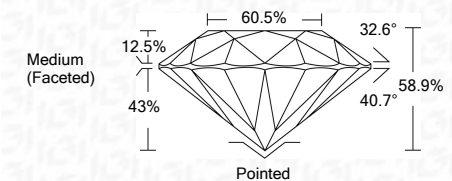


© IGI 2020, International Gemological Institute

FD - 10 20

LABORATORY GROWN DIAMOND REPORT

September 15, 2022	
IGI Report Number	LG542298605
Description	LABORATORY GROWN DIAMOND
Shape and Cutting Style	ROUND BRILLIANT
Measurements	7.72 - 7.75 X 4.56 MM
GRADING RESULTS	
Carat Weight	1.67 CARAT
Color Grade	G
Clarity Grade	VS 2
Cut Grade	EXCELLENT



ADDITIONAL GRADING INFORMATION

Polish	EXCELLENT
Symmetry	EXCELLENT
Fluorescence	NONE
Inscription(s)	LABGROWN IGI LG542298605

Inscription(s) **LABGROWN IGI LG542298605**

Comments: This Laboratory Grown Diamond was created by

Comments: This Laboratory Grown Diamond was created by Chemical Vapor Deposition (CVD) growth process and may include post-growth treatment.



September 15, 2022	Color Grade	1.87 CARAT	<p>Comments:</p> <p>This laboratory's Gemma Diamond was assessed by Chemical Vapor Deposition (CVD) growth process and may include post-growth treatment.</p>
IGI Report No. LG54228805	Clarity Grade	VS 2	
ROUND BRILLIANT	Cut Grade	EXCELLENT	
7.72 - 7.75 x 4.58 MM	Depth	58.5%	
	Table	60.5%	
	Girdle	Medium (Faceted)	
	Culet	Pointed	
	Polish	EXCELLENT	
	Symmetry	EXCELLENT	
	Fluorescence	NONE	
	Inscription(s)	LARGROWN IGI LG54228805	

This Laboratory Grown Diamond was created by Chemical Vapor Deposition (CVD) growth process and may include post-growth