



LABORATORY GROWN DIAMOND REPORT

| | |
|-------------------------|-----------------------------|
| January 5, 2023 | |
| IGI Report Number | LG563228906 |
| Description | LABORATORY GROWN DIAMOND |
| Shape and Cutting Style | ROUND BRILLIANT |
| Measurements | 6.59 - 6.61 X 4.01 MM |

| | |
|---------------|------------|
| Carat Weight | 1.07 CARAT |
| Color Grade | E |
| Clarity Grade | VS 1 |
| Cut Grade | EXCELLENT |

| | |
|--------------|-----------|
| Polish | EXCELLENT |
| Symmetry | EXCELLENT |
| Fluorescence | NONE |

Inscription(s) **LABGROWN (G) LG563228906**
 Comments: This Laboratory Grown Diamond was created by Chemical Vapor Deposition (CVD) growth process and may include post-growth treatment.
 Type IIa

LG563228906

Report verification at igi.org

Diagram illustrating the proportions of a faceted diamond. The diagram shows a diamond shape with various facets. Key proportions are labeled:

- Width: 60%
- Height: 13%
- Angle: 33.4°
- Depth: 44%
- Angle: 41.3°
- Height: 60.7%
- Width: 60%

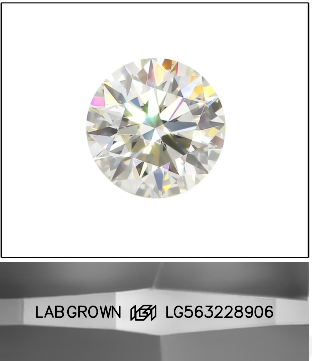
The diagram is labeled "Medium (Faceted)" on the left and "Pointed" at the bottom.

Red symbols indicate internal characteristics.
Green symbols indicate external characteristics.

GRADING SCALES

| IF | VVS ¹⁻² | VS ¹⁻² | SI ¹⁻² | I ¹⁻³ |
|---------------------|-----------------------------|------------------------|-------------------|------------------|
| Internally Flawless | Very Very Slightly Included | Very Slightly Included | Slightly Included | Included |

| | | | | | | | | | |
|---|---|---|---|---|---|---|-------|------------|-------|
| D | E | F | G | H | I | J | Faint | Very Light | Light |
|---|---|---|---|---|---|---|-------|------------|-------|

LASERSCRIBESM

Sample Image Used

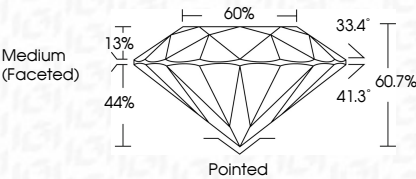


© IGI 2020, International Gemological Institute

FD - 10 20

| | |
|-------------------------|-----------------------------|
| January 5, 2023 | |
| IGI Report Number | LG563228906 |
| Description | LABORATORY GROWN DIAMOND |
| Shape and Cutting Style | ROUND BRILLIANT |
| Measurements | 6.59 - 6.61 X 4.01 MM |

| | |
|---------------|------------|
| Carat Weight | 1.07 CARAT |
| Color Grade | E |
| Clarity Grade | VS 1 |
| Cut Grade | EXCELLENT |



| | |
|----------------|---------------------------|
| Polish | EXCELLENT |
| Symmetry | EXCELLENT |
| Fluorescence | NONE |
| Inscription(s) | LABGROWN (16) LG563228906 |

Comments: This Laboratory Grown Diamond was created by Chemical Vapor Deposition (CVD) growth process and may include post-growth treatment.
Type IIa

[illegible]

Comments:
This Laboratory created by (CVD) growth post-growth Type IIa