



**INTERNATIONAL
GEMOLOGICAL
INSTITUTE**

ELECTRONIC COPY

LABORATORY GROWN DIAMOND REPORT

| | |
|-------------------------|-----------------------------|
| January 9, 2023 | |
| IGI Report Number | LG563230762 |
| Description | LABORATORY GROWN DIAMOND |
| Shape and Cutting Style | ROUND BRILLIANT |
| Measurements | 7.27 - 7.30 X 4.47 MM |

GRADING RESULTS

| | |
|---------------|------------|
| Carat Weight | 1.46 CARAT |
| Color Grade | F |
| Clarity Grade | VS 1 |
| Cut Grade | IDEAL |

ADDITIONAL GRADING INFORMATION

| | |
|--------------|-----------|
| Polish | EXCELLENT |
| Symmetry | EXCELLENT |
| Fluorescence | NONE |

Inscription(s) **LABGROWN  LG563230762**

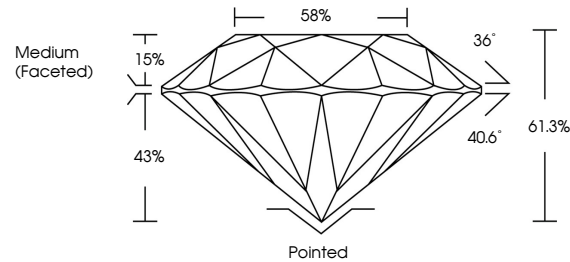
Comments: This Laboratory Grown Diamond was created by Chemical Vapor Deposition (CVD) growth process and may include post-growth treatment.

Type IIa

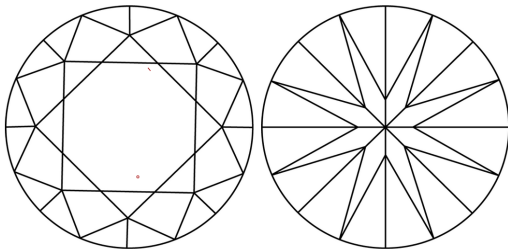
LABORATORY GROWN DIAMOND REPORT

LG563230762
Report verification at iglu.org

PROPORTIONS



CLARITY CHARACTERISTICS



KEY TO SYMBOLS

Red symbols indicate internal characteristics.
Green symbols indicate external characteristics.

LABORATORY GROWN
DIAMOND REPORT

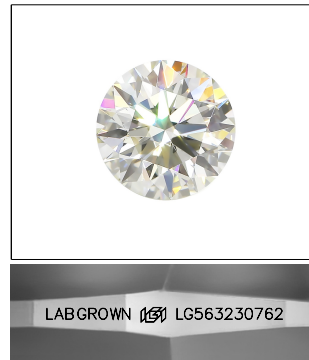
GRADING SCALES

CLARITY

| IF | VVS ¹⁻² | VS ¹⁻² | SI ¹⁻² | I ¹⁻³ |
|---------------------|-----------------------------|------------------------|-------------------|------------------|
| Internally Flawless | Very Very Slightly Included | Very Slightly Included | Slightly Included | Included |

COLOR

D E F G H I J Faint Very Light Light

LASERSCRIBESM

Sample Image Used



© IGI 2020, International Gemological Institute

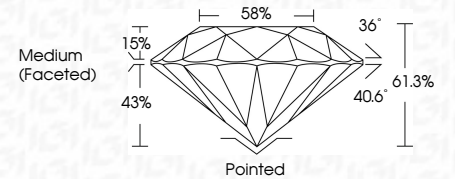
FD - 10 20

LABORATORY GROWN DIAMOND REPORT

| | |
|-------------------------|-----------------------------|
| January 9, 2023 | |
| IGI Report Number | LG563230762 |
| Description | LABORATORY GROWN DIAMOND |
| Shape and Cutting Style | ROUND BRILLIANT |
| Measurements | 7.27 - 7.30 X 4.47 MM |

GRADING RESULTS

| | |
|---------------|------------|
| Carat Weight | 1.46 CARAT |
| Color Grade | F |
| Clarity Grade | VS 1 |
| Cut Grade | IDEAL |



ADDITIONAL GRADING INFORMATION

| | |
|----------------|---------------------------------|
| Polish | EXCELLENT |
| Symmetry | EXCELLENT |
| Fluorescence | NONE |
| Inscription(s) | LABGROWN (G) LG563230762 |

Comments: This Laboratory Grown Diamond was created by Chemical Vapor Deposition (CVD) growth process and may include post-growth treatment.
Type IIa



IGI

| |
|---|
| January 9, 2028 |
| Tel Report No G656330742 |
| ROUND BRILLIANT |
| 1.46 CARAT F |
| VSI IDEAL 61.3% |
| 58% |
| Medium (Faceted) |
| Culet Polish Symmetry Fluorescence Inscriptions() |
| Poired EXCELLENT EXCELLENT NONE |
| LARGONIA JEWELLERS LTD US56529706 |
| Color Weight Carat Grade 1.27 - 7.90 X 4.47 MM |
| Clarity Grade Cut Grade Depth Table Girdle |

Comments:
This Laboratory Grown Diamond was created by Chemical Vapor Deposition CVD growth process and may include post-growth treatment.
type IIa

www.igi.org