



ELECTRONIC COPY

LABORATORY GROWN DIAMOND REPORT

November 7, 2022	
IGI Report Number	LG551299140
Description	LABORATORY GROWN DIAMOND
Shape and Cutting Style	ROUND BRILLIANT
Measurements	7.63 - 7.68 X 4.74 MM

GRADING RESULTS

Carat Weight	1.72 CARAT
Color Grade	E
Clarity Grade	SI 1
Cut Grade	IDEAL

ADDITIONAL GRADING INFORMATION

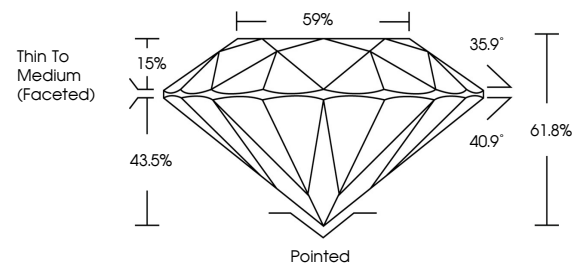
Polish	EXCELLENT
Symmetry	EXCELLENT
Fluorescence	NONE

Inscription(s) LABGROWN 163 LG551299140

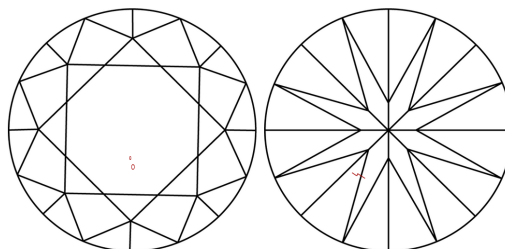
Comments: This Laboratory Grown Diamond was created by Chemical Vapor Deposition (CVD) growth process and may include post-growth treatment.
Type IIa

LG551299140

PROPORTIONS



CLARITY CHARACTERISTICS

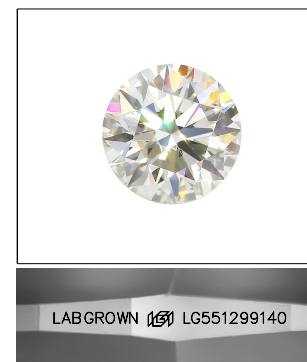


KEY TO SYMBOLS

Red symbols indicate internal characteristics.
Green symbols indicate external characteristics.

GRADING SCALES

COLOR GRADING SCALE	CL		NC		FT		VLT		LT	
	COLORLESS D-F		NEAR COLORLESS G-J		FAINT K-M		VERY LIGHT N-R		LIGHT S-Z	
CLARITY (10x) GRADING SCALE	FL	IF	VVS		VS		SI		I	
	FLAWLESS INTERNALLY		VERY VERY SLIGHTLY INCLUDED		VERY SLIGHTLY INCLUDED		SLIGHTLY INCLUDED		INCLUDED	

LASERSCRIBESM

Sample Image Used



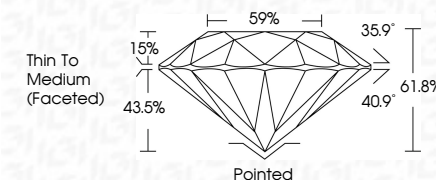
© IGI 2020, International Gemological Institute

FD - 10 20

www.igi.org

LABORATORY GROWN DIAMOND REPORT

November 7, 2022	
IGI Report Number	LG551299140
Description	LABORATORY GROWN DIAMOND
Shape and Cutting Style	ROUND BRILLIANT
Measurements	7.63 - 7.68 X 4.74 MM
GRADING RESULTS	
Carat Weight	1.72 CARAT
Color Grade	E
Clarity Grade	SI 1
Cut Grade	IDEAL



ADDITIONAL GRADING INFORMATION

Polish	EXCELLENT
Symmetry	EXCELLENT
Fluorescence	NONE
Inscription(s)	LABGROWN (15) LG551299140

Inscription(s) LABGROWN 15 LG551299140

Comments: This Laboratory Grown Diamond was created by Chemical Vapor Deposition (CVD) growth process and may include post-growth treatment.
Type IIa



November 7, 2023	1.72 CARAT E	S I 1	Pointed	Comments:
ROUND REPORT		IDEAL	EXCELLENT	This Laboratory Grown Diamond was
GIA REPORT # 15651299140		61.6%	EXCELLENT	created by Chemical Vapor Deposition
Color: F-G	1.72 CARAT	59%	EXCELLENT	(CVD) growth process and may include
Clarity: VVS1	1.72 CARAT	Thin To Medium	NONE	any treatment.
Weight: 1.72 CARAT		(Faceted)	LAB-GROWN 99%	Yours for
			(GIA# 15651299140)	