



ELECTRONIC COPY

LABORATORY GROWN DIAMOND REPORT

August 8, 2022	
IGI Report Number	LG541254638
Description	LABORATORY GROWN DIAMOND
Shape and Cutting Style	CUT CORNERED RECTANGULAR MODIFIED BRILLIANT
Measurements	9.82 X 6.83 X 4.33 MM

GRADING RESULTS

Carat Weight	2.53 CARATS
Color Grade	E
Clarity Grade	VS 2

ADDITIONAL GRADING INFORMATION

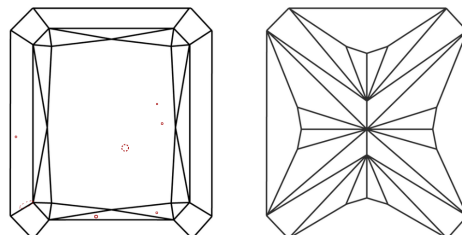
Polish	EXCELLENT
Symmetry	EXCELLENT
Fluorescence	NONE

Inscription(s) **LABGROWN IGI LG541254638**
 Comments: This Laboratory Grown Diamond was created by Chemical Vapor Deposition (CVD) growth process and may include post-growth treatment. Type IIa

Diagram illustrating the proportions of a diamond-shaped tile (LG541254638). The tile is shown with its dimensions and proportions:

- Top width: 61%
- Left side: 44.5%
- Right side: 63.4%
- Bottom: Pointed
- Left side detail: Slightly Thick To Thick (14%)

CLARITY CHARACTERISTICS

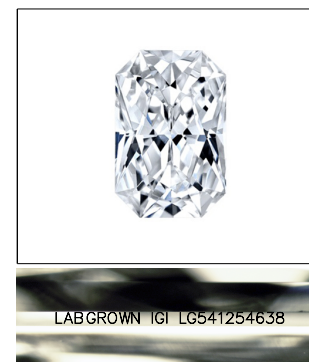


KEY TO SYMBOLS

Red symbols indicate internal characteristics.
Green symbols indicate external characteristics.

GRADING SCALES

COLOR GRADING SCALE	CL		NC		FT		VLT		LT	
	COLORLESS D-F		NEAR COLORLESS G-J		FAINT K-M		VERY LIGHT N-R		LIGHT S-Z	
CLARITY (10x) GRADING SCALE	FL IF		VVS		VS		SI		I	
	FLAWLESS INTERNALLY FLAWLESS		VERY VERY SLIGHTLY INCLUDED		VERY SLIGHTLY INCLUDED		SLIGHTLY INCLUDED		INCLUDED	

LASERSCRIBESM

Sample Image Used



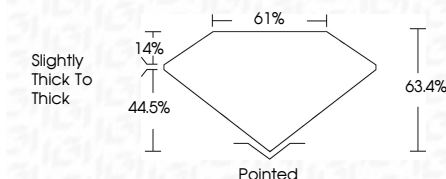
© IGI 2020, International Gemological Institute

FD - 10 20

LABORATORY GROWN DIAMOND REPORT

August 8, 2022	
IGI Report Number	LG541254638
Description	LABORATORY GROWN DIAMOND
Shape and Cutting Style	CUT CORNERED RECTANGULAR MODIFIED BRILLIANT
Measurements	9.82 X 6.83 X 4.33 MM

GRADING RESULTS	
Carat Weight	2.53 CARATS
Color Grade	E
Clarity Grade	VS 2



ADDITIONAL GRADING INFORMATION

Polish	EXCELLENT
Symmetry	EXCELLENT
Fluorescence	NONE
Inscription(s)	LABGROWN IGI LG541254638

Comments: This Laboratory Grown Diamond was created by Chemical Vapor Deposition (CVD) growth process and may include post-growth treatment.
Type IIa



August 8, 2022	Report No. LG54125438	2.53 CARATS	Pointed
GI COVERED BEC. MODIFIED		N5 2	EXCELLENT
2.01 X 3.63 X 4.33 MM		63.4%	EXCELLENT
		61%	NONE
		Slightly Thick to Thick	LABGROWN (GI)
			LG54125438
			Comments:
			This Laboratory Grown Diamond was
			grown by the Chemical Vapor Deposition
			(CVD) growth process and may include
			post-growth treatment.
			Type IIA

This Laboratory Grown Diamond was created by Chemical Vapor Deposition (CVD) growth process and may include post-growth treatment.