



04/21/2021	
IGI Report Number	LG474114433
Shape and Cutting Style	CUT CORNERED RECTANGULAR MODIFIED BRILLIANT
Measurements	9.42 x 6.76 x 4.64 mm
GRADING RESULTS	
Carat Weight	2.50 CARATS
Color Grade	H
Clarity Grade	VS 1
ADDITIONAL GRADING INFORMATION	
Polish	EXCELLENT
Symmetry	EXCELLENT
Fluorescence	NONE
Inscription(s)	LABGROWN IGI LG474114433

LG474114433

A diagram of a diamond-shaped cross-section. The top horizontal edge is labeled '65%' with dimension lines. The right vertical edge is labeled '68.6%' with dimension lines. The left vertical edge has two segments: the top segment is labeled '11%' and the bottom segment is labeled '53.5%', both with dimension lines. The top-left corner is labeled 'Slightly Thick' with a break symbol. The bottom vertex is labeled 'Pointed' with a break symbol.

COLOR GRADING SCALE	CL		NC	FT	VLT	LT
	COLORLESS D-F		NEAR COLORLESS G-J	FAINT K-M	VERY LIGHT N-R	LIGHT S-Z
CLARITY (10x) GRADING SCALE	FL	IF	VVS	VS	SI	I
	FLAWLESS INTERNALLY FLAWLESS		VERY VERY SLIGHTLY INCLUDED	VERY SLIGHTLY INCLUDED	SLIGHTLY INCLUDED	INCLUDED

© INTERNATIONAL GEMOLOGICAL INSTITUTE, INC.

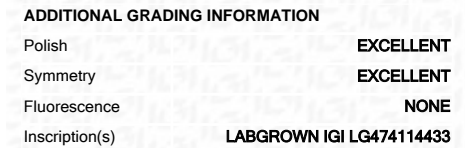


© IGI 2020, International Gemological Institute

LABORATORY GROWN DIAMOND REPORT

IGI Report Number	LG474114433
Shape and Cutting Style	CUT CORNERED RECTANGULAR MODIFIED BRILLIANT

GRADING RESULTS	
Carat Weight	2.50 CARATS
Color Grade	H
Clarity Grade	VS 1



This Laboratory Grown Diamond was created by Chemical Vapor Deposition (CVD) growth process and may include post-growth treatment.