



**ELECTRONIC COPY**

**LABORATORY GROWN DIAMOND REPORT**

March 2, 2021  
 IGI Report Number **LG12305911**  
 Description **LABORATORY GROWN  
DIAMOND**  
 Shape and Cutting Style **ROUND BRILLIANT**  
 Measurements **6.44 - 6.46 X 3.99 MM**

**GRADING RESULTS**

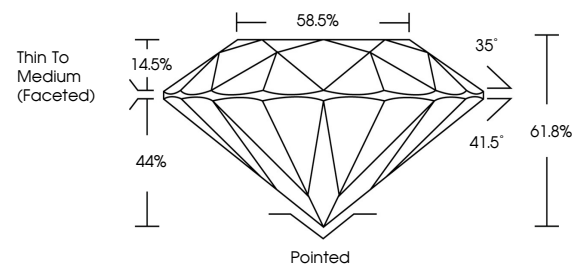
Carat Weight **1.01 CARAT**  
 Color Grade **G**  
 Clarity Grade **SI 1**  
 Cut Grade **EXCELLENT**

**ADDITIONAL GRADING INFORMATION**

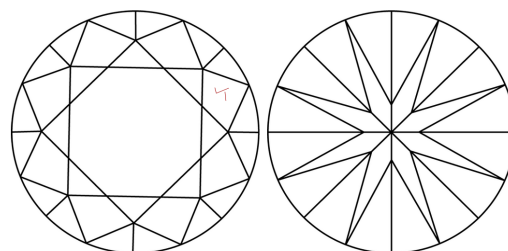
Polish **EXCELLENT**  
 Symmetry **EXCELLENT**  
 Fluorescence **NONE**  
 Inscription(s) **LABGROWN (IGI) 12305911**  
 Comments: This Chemical Vapor Deposition (CVD) laboratory grown diamond is classified as Type IIa

**LG12305911**

**PROPORTIONS**



**CLARITY CHARACTERISTICS**



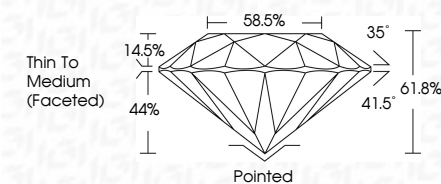
**KEY TO SYMBOLS**

Red symbols indicate internal characteristics.  
 Green symbols indicate external characteristics.

**GRADING SCALES**

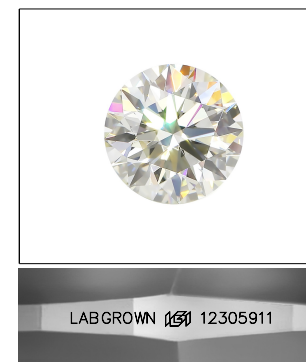
COLOR GRADING SCALE	CL	NC	FT	VLT	LT	
	COLORLESS D-F	NEAR COLORLESS G-J	FAINT K-M	VERY LIGHT N-R	LIGHT S-Z	
CLARITY (10x) GRADING SCALE	FL	IF	VVS	VS	SI	I
	FLAWLESS INTERNALLY FLAWLESS	VERY VERY SLIGHTLY INCLUDED	VERY SLIGHTLY INCLUDED	SLIGHTLY INCLUDED	INCLUDED	

March 2, 2021  
 IGI Report Number **LG12305911**  
 Description **LABORATORY GROWN  
DIAMOND**  
 Shape and Cutting Style **ROUND BRILLIANT**  
 Measurements **6.44 - 6.46 X 3.99 MM**  
**GRADING RESULTS**  
 Carat Weight **1.01 CARAT**  
 Color Grade **G**  
 Clarity Grade **SI 1**  
 Cut Grade **EXCELLENT**



**ADDITIONAL GRADING INFORMATION**

Polish **EXCELLENT**  
 Symmetry **EXCELLENT**  
 Fluorescence **NONE**  
 Inscription(s) **LABGROWN (IGI) 12305911**  
 Comments: This Chemical Vapor Deposition (CVD) laboratory grown diamond is classified as Type IIa



**LASERSCRIBE<sup>SM</sup>**  
Sample Image Used



**IGI**

March 2, 2021  
 IGI Report No **IGI12305911**  
**ROUND BRILLIANT**  
**6.44 - 6.46 X 3.99 MM**  
 Carat Weight **1.01 CARAT**  
 Color Grade **G**  
 Clarity Grade **SI 1**  
 Cut Grade **EXCELLENT**  
 Depth **61.8%**  
 Table **58.5%**  
 Girdle **Thin To Medium (Faceted)**  
 Culet **Pointed**  
 Polish **EXCELLENT**  
 Symmetry **EXCELLENT**  
 Fluorescence **EXCELLENT**  
 Inscription(s) **NONE**  
 Inscription(s) **LABGROWN (IGI) 12305911**  
 Comments: This Chemical Vapor Deposition (CVD) laboratory grown diamond is classified as Type IIa