



**ELECTRONIC COPY**

## LABORATORY GROWN DIAMOND REPORT

Description	LABORATORY GROWN DIAMOND
Shape and Cutting Style	EMERALD CUT
Measurements	8.60 X 5.96 X 4.07 MM

## GRADING RESULTS

Carat Weight	2.04 CARATS
Color Grade	F
Clarity Grade	VS 1

### ADDITIONAL GRADING INFORMATION

Polish	EXCELLENT
Symmetry	EXCELLENT
Fluorescence	NONE

Inscription(s) **LABGROWN IGI LG550266621**  
 Comments: This Laboratory Grown Diamond was created by Chemical Vapor Deposition (CVD) growth process and may include post-growth treatment. Type IIa

PROPORTIONS

61.5%

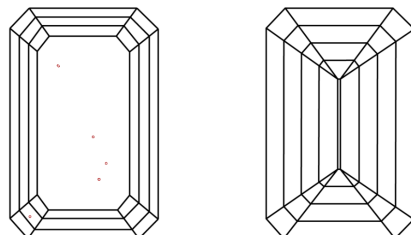
68.3%

50%

15%

Long

## CLARITY CHARACTERISTICS

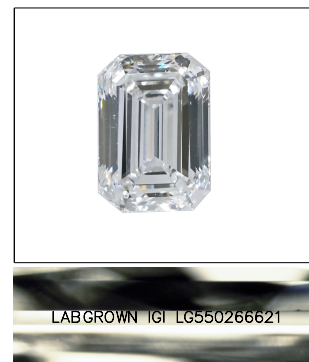


### KEY TO SYMBOLS

Red symbols indicate internal characteristics.  
Green symbols indicate external characteristics.

## GRADING SCALES

COLOR GRADING SCALE	CL		NC		FT		VLT		LT	
	COLORLESS D-F		NEAR COLORLESS G-J		FAINT K-M		VERY LIGHT N-R		LIGHT S-Z	
CLARITY (10x) GRADING SCALE	FL IF		VVS		VS		SI		I	
	FLAWLESS INTERNALLY FLAWLESS		VERY VERY SLIGHTLY INCLUDED		VERY SLIGHTLY INCLUDED		SLIGHTLY INCLUDED		INCLUDED	

LASERSCRIBE<sup>SM</sup>

Sample Image Used



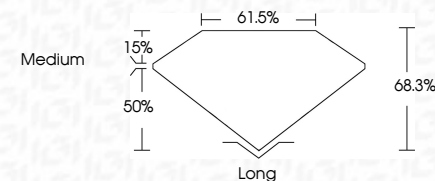
© IGI 2020, International Gemological Institute

FD - 10 20

**www.igi.org**

## LABORATORY GROWN DIAMOND REPORT

October 11, 2022	
IGI Report Number	LG550266621
Description	LABORATORY GROWN DIAMOND
Shape and Cutting Style	EMERALD CUT
Measurements	8.60 X 5.96 X 4.07 MM
<b>GRADING RESULTS</b>	
Carat Weight	2.04 CARATS
Color Grade	F
Clarity Grade	VS 1



### ADDITIONAL GRADING INFORMATION

Polish	EXCELLENT
Symmetry	EXCELLENT
Fluorescence	NONE
Inscription(s)	LABGROWN IGI LG550266621

Comments: This Laboratory Grown Diamond was created by Chemical Vapor Deposition (CVD) growth process and may include post-growth treatment.  
Type IIa



October 11, 2022	GL Report No. LG58266621
EMERALD CUT	
4.60 X 5.96 X 4.07 MM	
Carat Weight	2.04 CARATS
Color Grade	F
Clarity Grade	VS 1
Depth	68.3%
Table	61.5%
Girdle	Medium
Culet	Long
Polish	EXCELLENT
Symmetry	EXCELLENT
Fluorescence	NONE
Inscriptions	LABGROWN IGI LG58266621
Comments:	
<p>This Laboratory Grown Diamond was          created using the Verneer Chemical Vapor Deposition          (CVD) growth process and may include          post-growth treatment.          Type IIA</p>	