



ELECTRONIC COPY

LABORATORY GROWN DIAMOND REPORT

September 1, 2022

IGI Report Number **LG537238239**

Description	LABORATORY GROWN DIAMOND
Shape and Cutting Style	ROUND BRILLIANT

Measurements **6.21 - 6.25 X 3.65 MM**

GRADING RESULTS

Carat Weight	0.87 CARAT
Color Grade	F
Clarity Grade	VVS 2
Cut Grade	EXCELLENT

ADDITIONAL GRADING INFORMATION

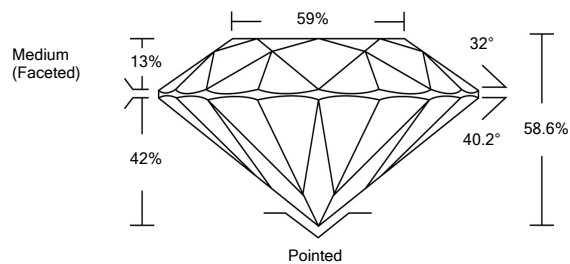
Polish	EXCELLENT
Symmetry	VERY GOOD
Fluorescence	NONE

Inscription(s) **LABGROWN IGI LG537238239**

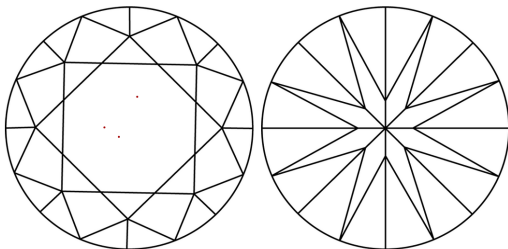
Comments: This Laboratory Grown Diamond was created by Chemical Vapor Deposition (CVD) growth process and may include post-growth treatment.

LG537238239

PROPORTIONS



CLARITY CHARACTERISTICS



KEY TO SYMBOLS

Red symbols indicate internal characteristics.
Green symbols indicate external characteristics.

LABORATORY GROWN
DIAMOND REPORT

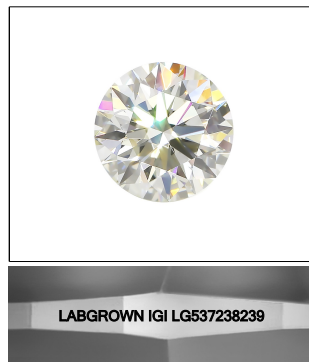
GRADING SCALES

COLOR GRADING SCALE	CL		NC	FT	VLT	LT
	COLORLESS D-F		NEAR COLORLESS G-J	FAINT K-M	VERY LIGHT N-R	LIGHT S-Z
CLARITY (10x) GRADING SCALE	FL	IF	VVS	VS	SI	I
	FLAWLESS INTERNALLY FLAWLESS		VERY VERY SLIGHTLY INCLUDED	VERY SLIGHTLY INCLUDED	SLIGHTLY INCLUDED	INCLUDED

The laboratory growth diamond described in this Report (Report) has been graded, tested, analyzed, examined and/or inscribed by International Gemological Institute (I.G.I.). A laboratory grown diamond is one that has essentially the same chemical, physical and optical properties as a natural diamond. I.G.I. uses the same chemical, physical and optical testing procedures as those used by the Gemological Institute of America (G.I.A.) to grade diamonds. I.G.I. employs and utilizes those techniques and equipment currently available to I.G.I., including, without limitation, 10x magnification, corrected triplet loupe, binocular microscope, master color comparison stones, non-contact optical refractometer, leveler, spectrophotometer, ultraviolet light, and other testing instruments and/or processes as deemed appropriate by I.G.I. This Report includes advanced security features. A duly accredited gemologist or jeweler can advise you with respect to the importance of and interrelationship between cut, color, clarity and carat weight.

THIS REPORT IS NEITHER A GUARANTEE, VALUATION, NOR APPRAISAL OF THE GEMSTONE DESCRIBED HEREIN. PLEASE REVIEW THE LIMITATIONS AND RESTRICTIONS SET FORTH ONLINE. FOR A COMPLETE LIST OF LIMITATIONS AND DISCLAIMERS, PLEASE GO TO WWW.IGI.ORG OR CALL 1-888-BUY-IGI.

© INTERNATIONAL GEMOLOGICAL INSTITUTE, INC.

LASERSCRIBESM

Sample Image Used



© IGI 2020, International Gemological Institute

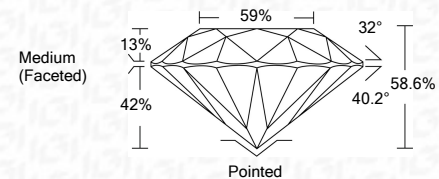
FD - 10 20

LABORATORY GROWN DIAMOND REPORT

September 1, 2022	
IGI Report Number	LG537238239
Description	LABORATORY GROWN DIAMOND
Shape and Cutting Style	ROUND BRILLIANT
Measurements	6.21 - 6.25 X 3.65 MM

GRADING RESULTS

Carat Weight	0.87 CARAT
Color Grade	F
Clarity Grade	VVS 2
Cut Grade	EXCELLENT



ADDITIONAL GRADING INFORMATION

Polish	EXCELLENT
Symmetry	VERY GOOD
Fluorescence	NONE
Inscription(s)	LABGROWN IGI LG537238239

Inscription(s) **LABGROWN IGI LG537238239**

Comments: This Laboratory Grown Diamond was created by Chemical Vapor Deposition (CVD) growth process and may include post-growth treatment.



September 1, 2022	GI Report No LG537238239	
ROUND BRILLIANT	2.21 - 2.25 x 3.65 MM	
Carat Weight		0.87 CARAT
Color Grade		F
Clarity Grade		VVS 2
Cut Grade		EXCELLENT
Depth		58.6%
Table		59%
Girdle		Medium (Feared)
Culet		Pointed
Polish		EXCELLENT
Symmetry		VERY GOOD
Fluorescence		NONE
Inscriptions (I)		LABGROWN IGI
		LG537238239
Comments:	This Laboratory Grown Diamond was created by Chemical Vapor Deposition (CVD) growth process and may include post-growth treatment.	

This Laboratory Grown Diamond was created by Chemical Vapor Deposition (CVD) growth process and may include post-growth treatment.