



ELECTRONIC COPY

LABORATORY GROWN DIAMOND REPORT

December 15, 2022	
IGI Report Number	LG560207636
Description	LABORATORY GROWN DIAMOND
Shape and Cutting Style	OLD EUROPEAN CUT
Measurements	8.96 X 9.01 X 5.66 MM

GRADING RESULTS

Carat Weight	3.01 CARATS
Color Grade	F
Clarity Grade	VS 1

ADDITIONAL GRADING INFORMATION

Polish	EXCELLENT
Symmetry	EXCELLENT
Fluorescence	NONE

Inscription(s) LABGROWN LG560207636

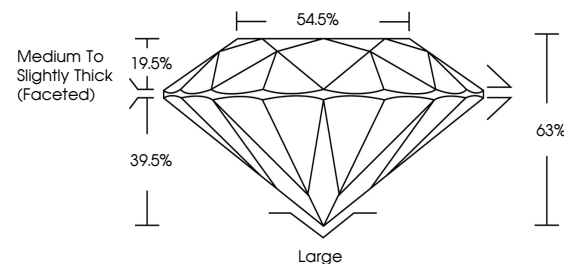
Comments: This Laboratory Grown Diamond was created by Chemical Vapor Deposition (CVD) growth process and may include post-growth treatment.
Type IIa

LABORATORY GROWN DIAMOND REPORT

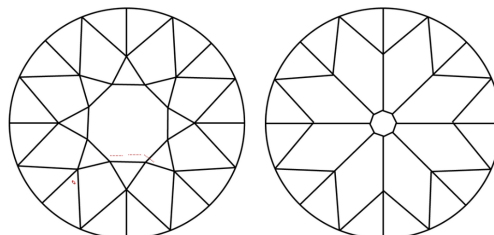
LG560207636

Report verification at igi.org

PROPORTIONS



CLARITY CHARACTERISTICS



KEY TO SYMBOLS

Red symbols indicate internal characteristics.
Green symbols indicate external characteristics.

LABORATORY GROWN
DIAMOND REPORT

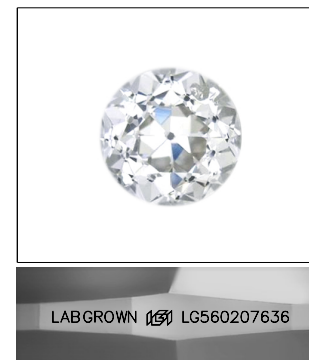
GRADING SCALES

CLARITY

IF	VVS ¹⁻²	VS ¹⁻²	SI ¹⁻²	I ¹⁻³
Internally Flawless	Very Very Slightly Included	Very Slightly Included	Slightly Included	Included

COLOR

D E F G H I J Faint Very Light Light

LASERSCRIBESM

Sample Image Used



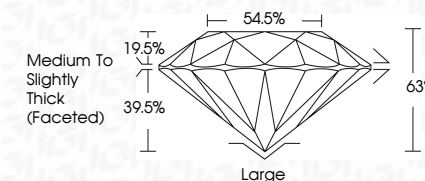
© IGI 2020, International Gemological Institute

FD - 10 20

www.igi.org

LABORATORY GROWN DIAMOND REPORT

December 15, 2022	
IGI Report Number	LG560207636
Description	LABORATORY GROWN DIAMOND
Shape and Cutting Style	OLD EUROPEAN CUT
Measurements	8.96 X 9.01 X 5.66 MM
GRADING RESULTS	
Carat Weight	3.01 CARATS
Color Grade	F
Clarity Grade	VS 1



ADDITIONAL GRADING INFORMATION

Polish	EXCELLENT
Symmetry	EXCELLENT
Fluorescence	NONE
Inscription(s)	LABGROWN (157) LG560207636

Comments: This Laboratory Grown Diamond was created by Chemical Vapor Deposition (CVD) growth process and may include post-growth treatment.
Type IIa



December 15, 2022
 IGI Report No LG560207636
 AND EUROPEAN CIT

3.01 CARATS	VS 1	68%	64.0%	Medium To Slightly Thick (Preferred)	Large	EXCELLENT	EXCELLENT	NONE	LABGROWN 1997
Color Grade	Clarity Grade	Depth	Table	Girdle	Culet	Polish	Symmetry	Fluorescence (incription(s))	
9.98 X 9.01 X 5.65 MM									

Comments: This Laboratory Grown Diamond was created by Chemical Vapor Deposition (CVD) growth process and may include post-growth treatment.