



ELECTRONIC COPY

LABORATORY GROWN DIAMOND REPORT

July 11, 2019	
IGI Report Number	LG375924275
Description	LABORATORY GROWN DIAMOND
Shape and Cutting Style	ROUND BRILLIANT
Measurements	6.63 - 6.67 X 4.13 MM

GRADING RESULTS

Carat Weight	1.12 CARAT
Color Grade	I
Clarity Grade	SI 1
Cut Grade	IDEAL

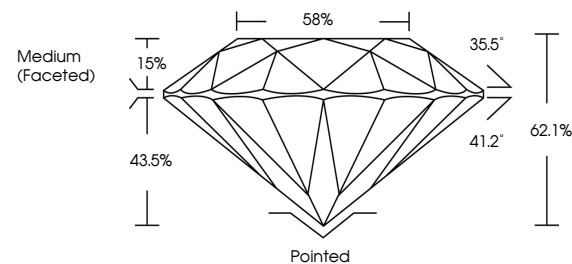
ADDITIONAL GRADING INFORMATION

Polish	VERY GOOD
Symmetry	EXCELLENT
Fluorescence	NONE
Inscription(s)	LABGROWN G LG375924275

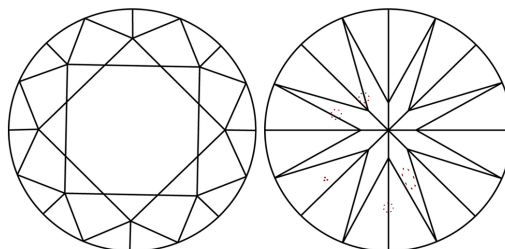
Inscription(s)	LABGROWN IGI LG375924275
Comments:	This Chemical Vapor Deposition (CVD) laboratory grown diamond is classified as Type IIa

LG375924275

PROPORTIONS



CLARITY CHARACTERISTICS



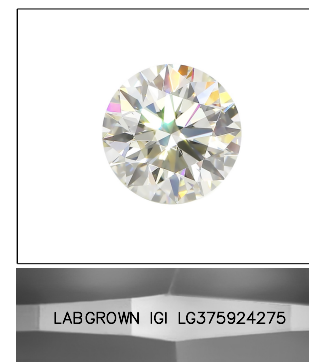
KEY TO SYMBOLS

Red symbols indicate internal characteristics.
Green symbols indicate external characteristics.

LABORATORY GROWN
DIAMOND REPORT

GRADING SCALES

COLOR GRADING SCALE	CL		NC		FT		VLT		LT	
	COLORLESS D-F		NEAR COLORLESS G-J		FAINT K-M		VERY LIGHT N-R		LIGHT S-Z	
CLARITY (10x) GRADING SCALE	FL IF		VVS		VS		SI		I	
	FLAWLESS INTERNALLY FLAWLESS		VERY VERY SLIGHTLY INCLUDED		VERY SLIGHTLY INCLUDED		SLIGHTLY INCLUDED		INCLUDED	

LASERSCRIBESM

Sample Image Used



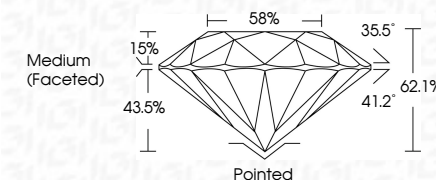
© IGI 2020, International Gemological Institute

FD - 10 20

www.igi.org

LABORATORY GROWN DIAMOND REPORT

July 11, 2019	
IGI Report Number	LG375924275
Description	LABORATORY GROWN DIAMOND
Shape and Cutting Style	ROUND BRILLIANT
Measurements	6.63 - 6.67 X 4.13 MM
GRADING RESULTS	
Carat Weight	1.12 CARAT
Color Grade	I
Clarity Grade	SI 1
Cut Grade	IDEAL



ADDITIONAL GRADING INFORMATION

Polish	VERY GOOD
Symmetry	EXCELLENT
Fluorescence	NONE
Inscription(s)	LABGROWN IGI LG375924275
Comments: This Chemical Vapor Deposition (CVD) laboratory grown diamond is classified as Type IIa	

[illegible]

This Chemical Vapor Deposition (CVD) laboratory grown diamond is classified as