



ELECTRONIC COPY

LABORATORY GROWN DIAMOND REPORT

November 25, 2022	
IGI Report Number	LG557233584
Description	LABORATORY GROWN DIAMOND
Shape and Cutting Style	ROUND BRILLIANT
Measurements	7.89 - 7.93 X 4.82 MM

GRADING RESULTS

Carat Weight	1.85 CARAT
Color Grade	F
Clarity Grade	VS 2
Cut Grade	IDEAL

ADDITIONAL GRADING INFORMATION

Polish	EXCELLENT
Symmetry	EXCELLENT
Fluorescence	NONE

Inscription(s) LABGROWN  LG557233584

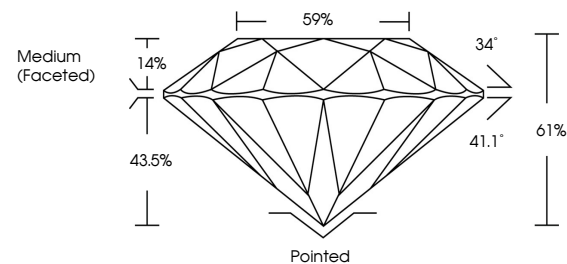
Comments: This Laboratory Grown Diamond was created by Chemical Vapor Deposition (CVD) growth process and may include post-growth treatment.
Type IIa

LABORATORY GROWN DIAMOND REPORT

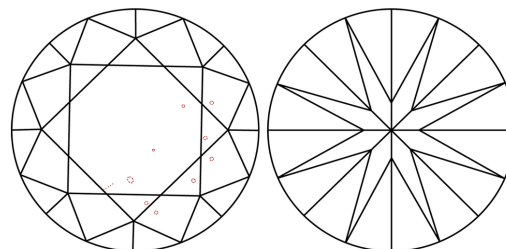
LG557233584

Report verification at igi.org

PROPORTIONS



CLARITY CHARACTERISTICS



KEY TO SYMBOLS

Red symbols indicate internal characteristics.
Green symbols indicate external characteristics.

LABORATORY GROWN
DIAMOND REPORT

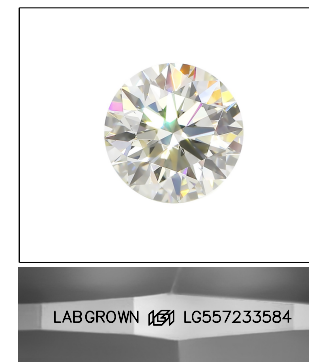
GRADING SCALES

CLARITY

IF	VVS ¹⁻²	VS ¹⁻²	SI ¹⁻²	I ¹⁻³
Internally Flawless	Very Very Slightly Included	Very Slightly Included	Slightly Included	Included

COLOR

D E F G H I J Faint Very Light Light

LASERSCRIBESM

Sample Image Used



© IGI 2020, International Gemological Institute

FD - 10 20

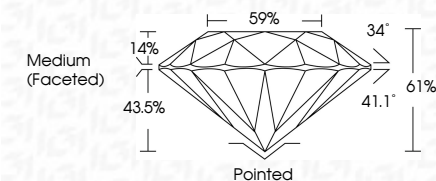
www.igi.org

LABORATORY GROWN DIAMOND REPORT

November 25, 2022	
IGI Report Number	LG557233584
Description	LABORATORY GROWN DIAMOND
Shape and Cutting Style	ROUND BRILLIANT
Measurements	7.89 - 7.93 X 4.82 MM

GRADING RESULTS

Carat Weight	1.85 CARAT
Color Grade	F
Clarity Grade	VS 2
Cut Grade	IDEAL



ADDITIONAL GRADING INFORMATION

Polish	EXCELLENT
Symmetry	EXCELLENT
Fluorescence	NONE
Inscription(s)	LABGROWN (157) LG557233584

Comments: This Laboratory Grown Diamond was created by Chemical Vapor Deposition (CVD) growth process and may include post-growth treatment.
Type IIa



November 25, 2022
IGI Report No LG557233584
ROUND BRILLIANT

ROUND BRILLIANT	17.89 - 7.93 X 4.82 MM	1.85 CARAT
	Carat Weight	F
	Color Grade	
	Clarity Grade	VS 2
	Cut Grade	IDEAL
	Depth	61%
	Table	59%
	Girdle	Medium (Existent)

Culet	Pointed
Polish	EXCELLENT
Symmetry	EXCELLENT
Fluorescence	NONE

Comments: The Laboratory Grown Diamond was created by Chemical Vapor Deposition (CVD) growth process and may include post-growth treatment.

Comments:
This Laboratory Grown Diamond was
treated by Chemical Vapor Deposition
(CVD) growth process and may include
post-growth treatment.