



**ELECTRONIC COPY**

## LABORATORY GROWN DIAMOND REPORT

October 21, 2022	
IGI Report Number	LG553218860
Description	LABORATORY GROWN DIAMOND
Shape and Cutting Style	ROUND BRILLIANT
Measurements	7.43 - 7.49 X 4.57 MM

## GRADING RESULTS

Carat Weight	1.59 CARAT
Color Grade	E
Clarity Grade	VS 2
Cut Grade	IDEAL

### ADDITIONAL GRADING INFORMATION

Polish	EXCELLENT
Symmetry	EXCELLENT
Fluorescence	NONE

Inscription(s) LABGROWN 163 LG553218860

Comments: As Grown - No indication of post-growth treatment.

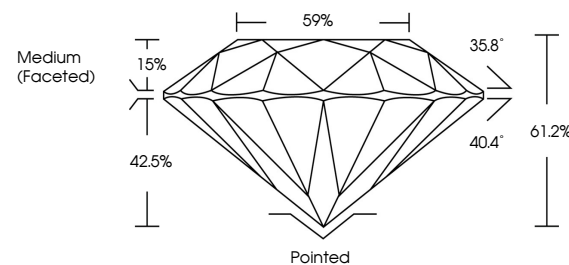
This Laboratory Grown Diamond was created by High Pressure High Temperature (HPHT) growth process.  
Type II

## LABORATORY GROWN DIAMOND REPORT

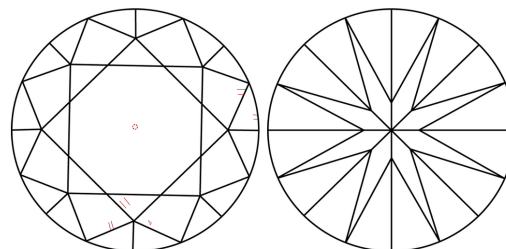
LG553218860

Report verification at [igi.org](http://igi.org)

## PROPORTIONS



## CLARITY CHARACTERISTICS



## KEY TO SYMBOLS

Red symbols indicate internal characteristics.  
Green symbols indicate external characteristics.

LABORATORY GROWN  
DIAMOND REPORT

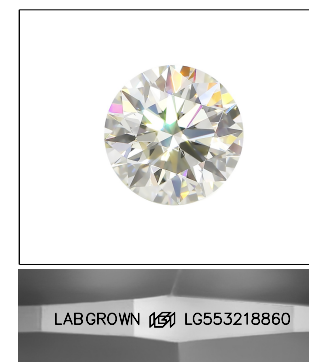
## GRADING SCALES

## CLARITY

IF	VVS <sup>1-2</sup>	VS <sup>1-2</sup>	SI <sup>1-2</sup>	I <sup>1-3</sup>
Internally Flawless	Very Very Slightly Included	Very Slightly Included	Slightly Included	Included

**COLOR**

D E F G H I J Faint Very Light Light

LASERSCRIBE<sup>SM</sup>

Sample Image Used



© IGI 2020, International Gemological Institute

FD - 10 20

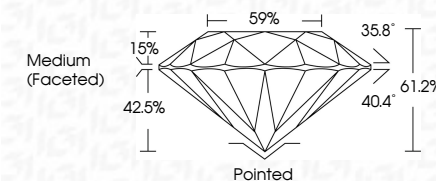
**www.igi.org**

## LABORATORY GROWN DIAMOND REPORT

October 21, 2022	
IGI Report Number	LG553218860
Description	LABORATORY GROWN DIAMOND
Shape and Cutting Style	ROUND BRILLIANT
Measurements	7.43 - 7.49 X 4.57 MM

## GRADING RESULTS

Carat Weight	1.59 CARAT
Color Grade	E
Clarity Grade	VS 2
Cut Grade	IDEAL



### ADDITIONAL GRADING INFORMATION

Polish	EXCELLENT
Symmetry	EXCELLENT
Fluorescence	NONE
Inscription(s)	LABGROWN (157) LG553218860

Comments: As Grown - No indication of post-growth treatment.  
This Laboratory Grown Diamond was created by High Pressure High Temperature (HPHT) growth process.  
Type II



<b>October 21, 2022</b>	<b>IGI Report No LG563218840</b>
<b>ROUND BRILLIANT</b>	
<b>7.68 - 7.49 X 4.57 MM</b>	
<b>Carat Weight</b>	<b>1.59 CARAT</b>
<b>Color Grade</b>	<b>E</b>
<b>Clarity Grade</b>	<b>VS-2</b>
<b>Cut Grade</b>	<b>IDEAL</b>
<b>Depth</b>	<b>61.2%</b>
<b>Table</b>	<b>59%</b>
<b>Girdle</b>	<b>Medium (Faceted)</b>
<b>Culet</b>	<b>Pointed</b>
<b>Polish</b>	<b>EXCELLENT</b>
<b>Symmetry</b>	<b>EXCELLENT</b>
<b>Fluorescence</b>	<b>NONE</b>
<b>Inscriptions(s)</b>	<b>LABGROWN 487 LG563218840</b>
<b>Comments:</b>	
<b>Grown - No indication of post-growth treatment.</b>	
<b>This Laboratory Grown Diamond was appraised by High Pressure High temperature (HPHT) growth process.</b>	