



**ELECTRONIC COPY**

## LABORATORY GROWN DIAMOND REPORT

June 24, 2022	
IGI Report Number	LG530227215
Description	LABORATORY GROWN DIAMOND
Shape and Cutting Style	ROUND BRILLIANT
Measurements	7.29 - 7.33 X 4.56 MM

## GRADING RESULTS

Carat Weight	1.51 CARAT
Color Grade	F
Clarity Grade	VS 1
Cut Grade	IDEAL

### ADDITIONAL GRADING INFORMATION

Polish	VERY GOOD
Symmetry	EXCELLENT
Fluorescence	NONE
Inscription(s)	LABGROWN   LG530227215

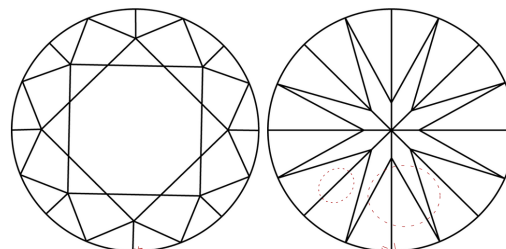
Comments: This Laboratory Grown Diamond was created by Chemical Vapor Deposition (CVD) growth process and may include post-growth treatment.  
Type IIa

Diagram illustrating the proportions of a diamond, labeled LG530227215. The proportions are defined as follows:

- Width: 58%
- Depth: 43.5%
- Table: 15%
- Crown Angle: 35.4°
- Pavilion Angle: 41°
- Overall Height: 62.3%

The diamond is described as "Medium To Slightly Thick (Faceted)" and "Pointed".

## CLARITY CHARACTERISTICS

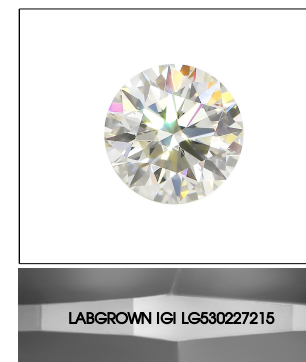


## KEY TO SYMBOLS

Red symbols indicate internal characteristics.  
Green symbols indicate external characteristics.

## GRADING SCALES

COLOR GRADING SCALE	CL		NC		FT		VLT		LT	
	COLORLESS D-F		NEAR COLORLESS G-J		FAINT K-M		VERY LIGHT N-R		LIGHT S-Z	
CLARITY (10x) GRADING SCALE	FL	IF	VVS		VS		SI		I	
	FLAWLESS INTERNALLY FLAWLESS		VERY VERY SLIGHTLY INCLUDED		VERY SLIGHTLY INCLUDED		SLIGHTLY INCLUDED		INCLUDED	

LASERSCRIBE<sup>SM</sup>

Sample Image Used

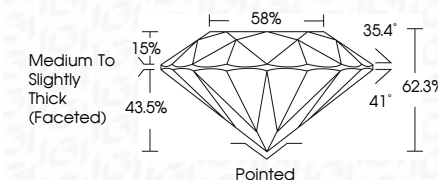


© IGI 2020, International Gemological Institute

FD - 10 20

LABORATORY GROWN DIAMOND REPORT

June 24, 2022	
IGI Report Number	LG530227215
Description	LABORATORY GROWN DIAMOND
Shape and Cutting Style	ROUND BRILLIANT
Measurements	7.29 - 7.33 X 4.56 MM
<b>GRADING RESULTS</b>	
Carat Weight	1.51 CARAT
Color Grade	F
Clarity Grade	VS 1
Cut Grade	IDEAL



### ADDITIONAL GRADING INFORMATION

Polish	VERY GOOD
Symmetry	EXCELLENT
Fluorescence	NONE
Inscription(s)	LABGROWN IGI LG530227215

Comments: This Laboratory Grown Diamond was created by Chemical Vapor Deposition (CVD) growth process and may include post-growth treatment.  
Type IIa



June 24, 2022	IGI Report No. LGS0227215	1.51 CARAT	F	VS 1	Pointed	
	ROUND BRILLIANT			IDEAL	VERY GOOD	
	28 - 7.33 X 4.55 MM			62.5%	EXCELLENT	
	Zar Weight			59%	NONE	
	Color Grade			Medium To Slightly Thick (Faceted)	LARGROWN (GI)	
	Clarity Grade				LSG0227215	
	Depth					
	Table					
	Girdle					
	Culet					
	Polish					
	Symmetry					
	Fluorescence					
	Inscriptions(3)					
	Comments:					
	This Laboratory Grown Diamond was created by Chemical Vapor Deposition (CVD) growth process and may include post-growth treatment.					

**Comments:** This Laboratory Grown Diamond was created by Chemical Vapor Deposition (CVD) growth process and may include post-growth treatment.