



ELECTRONIC COPY

LABORATORY GROWN DIAMOND REPORT

September 14, 2022	
IGI Report Number	LG544246012
Description	LABORATORY GROWN DIAMOND
Shape and Cutting Style	ROUND BRILLIANT
Measurements	7.45 - 7.49 X 4.61 MM

GRADING RESULTS

Carat Weight	1.59 CARAT
Color Grade	F
Clarity Grade	VS 1
Cut Grade	IDEAL

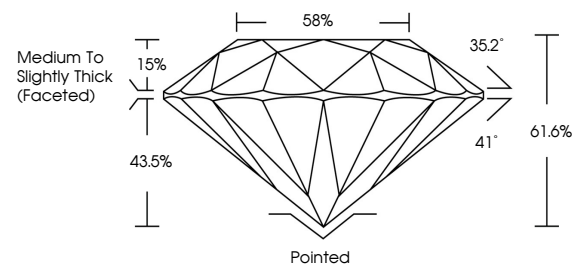
ADDITIONAL GRADING INFORMATION

Polish	EXCELLENT
Symmetry	EXCELLENT
Fluorescence	NONE
Inscription(s)	LABGROWN G LG544246012

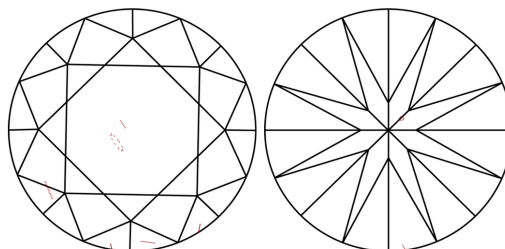
Comments: This Laboratory Grown Diamond was created by Chemical Vapor Deposition (CVD) growth process and may include post-growth treatment.
Type IIa

LG544246012

PROPORTIONS



CLARITY CHARACTERISTICS

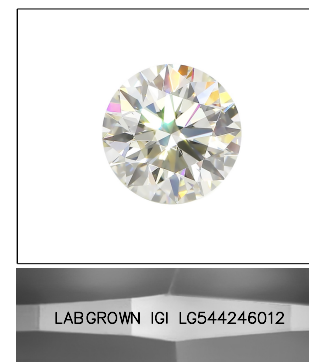


KEY TO SYMBOLS

Red symbols indicate internal characteristics.
Green symbols indicate external characteristics.

GRADING SCALES

COLOR GRADING SCALE	CL		NC	FT	VLT	LT
	COLORLESS D-F		NEAR COLORLESS G-J	FAINT K-M	VERY LIGHT N-R	LIGHT S-Z
CLARITY (10x) GRADING SCALE	FL	IF	VVS	VS	SI	I
	FLAWLESS INTERNALLY FLAWLESS		VERY VERY SLIGHTLY INCLUDED	VERY SLIGHTLY INCLUDED	SLIGHTLY INCLUDED	INCLUDED

LASERSCRIBESM

Sample Image Used

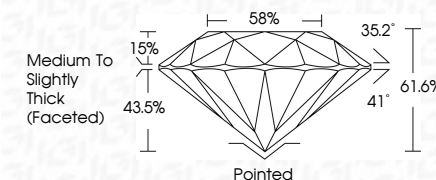


© IGI 2020, International Gemological Institute

FD - 10 20

LABORATORY GROWN DIAMOND REPORT

September 14, 2022	
IGI Report Number	LG544246012
Description	LABORATORY GROWN DIAMOND
Shape and Cutting Style	ROUND BRILLIANT
Measurements	7.45 - 7.49 X 4.61 MM
GRADING RESULTS	
Carat Weight	1.59 CARAT
Color Grade	F
Clarity Grade	VS 1
Cut Grade	IDEAL



ADDITIONAL GRADING INFORMATION

Polish	EXCELLENT
Symmetry	EXCELLENT
Fluorescence	NONE
Inscription(s)	LABGROWN IGI LG544246012

Comments: This Laboratory Grown Diamond was created by Chemical Vapor Deposition (CVD) growth process and may include post-growth treatment.
Type IIa



September 14, 2022	Report No. US64246012	1.59 CARAT F
ROUND BRILLIANT	VS1	IDEAL
61.45 - 7.49 X 4.61 MM	61.6%	59%
Carat Weight	Color Grade	Clarity Grade
Color Grade	Cut Grade	Depth
Table	Girdle	Symmetry
Fluorescence	Fluorescence Description(s)	Comments:
Paired	EXCELLENT	EXCELLENT
None	None	None
Laserdown (s)	US64246012	