



ELECTRONIC COPY

LABORATORY GROWN DIAMOND REPORT

October 18, 2022	
IGI Report Number	LG544248568
Description	LABORATORY GROWN DIAMOND
Shape and Cutting Style	ROUND BRILLIANT
Measurements	7.27 - 7.32 X 4.61 MM

GRADING RESULTS

Carat Weight	1.51 CARAT
Color Grade	G
Clarity Grade	VS 1
Cut Grade	EXCELLENT

ADDITIONAL GRADING INFORMATION

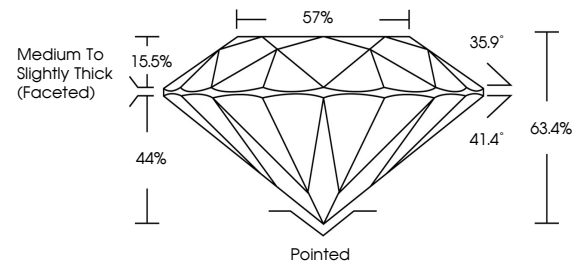
Polish	EXCELLENT
Symmetry	EXCELLENT
Fluorescence	NONE

Inscription(s) LABGROWN  LG544248568

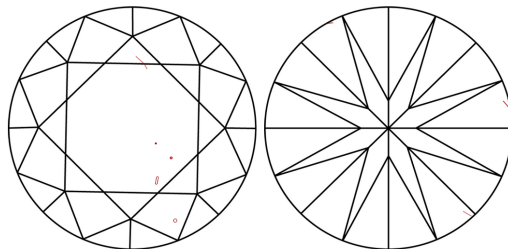
Comments: This Laboratory Grown Diamond was created by Chemical Vapor Deposition (CVD) growth process and may include post-growth treatment.
Type IIa

LG544248568

PROPORTIONS



CLARITY CHARACTERISTICS

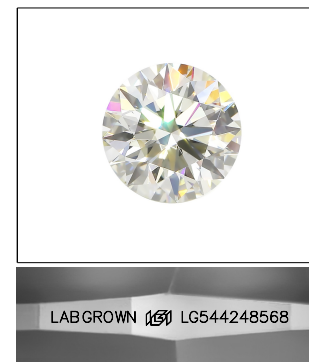


KEY TO SYMBOLS

Red symbols indicate internal characteristics.
Green symbols indicate external characteristics.

GRADING SCALES

COLOR GRADING SCALE	CL		NC		FT		VLT		LT	
	COLORLESS D-F		NEAR COLORLESS G-J		FAINT K-M		VERY LIGHT N-R		LIGHT S-Z	
CLARITY (10x) GRADING SCALE	FL IF		VVS		VS		SI		I	
	FLAWLESS INTERNALLY FLAWLESS		VERY VERY SLIGHTLY INCLUDED		VERY SLIGHTLY INCLUDED		SLIGHTLY INCLUDED		INCLUDED	

LASERSCRIBESM

Sample Image Used

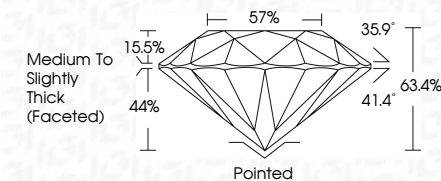


© IGI 2020, International Gemological Institute

FD - 10 20

LABORATORY GROWN DIAMOND REPORT

October 18, 2022	
IGI Report Number	LG544248568
Description	LABORATORY GROWN DIAMOND
Shape and Cutting Style	ROUND BRILLIANT
Measurements	7.27 - 7.32 X 4.61 MM
GRADING RESULTS	
Carat Weight	1.51 CARAT
Color Grade	G
Clarity Grade	VS 1
Cut Grade	EXCELLENT



ADDITIONAL GRADING INFORMATION

Polish	EXCELLENT
Symmetry	EXCELLENT
Fluorescence	NONE
Inscription(s)	LABGROWN (G) LG544248568

Comments: This Laboratory Grown Diamond was created by Chemical Vapor Deposition (CVD) growth process and may include post-growth treatment.
Type IIa



October 18, 2022	GI Report No. LGS5426568	1.61 CARAT	VS 1	Polished	None	LaserScan (laser)	<p>This Laboratory Grown Diamond was created by Chemical Vapor Deposition (CVD) growth process and may include natural inclusions and may require treatment.</p> <p>Type Ia</p>
GI Report No. LGS5426568	1.61 CARAT	VS 1	Excellent	Excellent	Excellent	LGS426568	
GI Report No. LGS5426568	1.61 CARAT	VS 1	63.4%	57%	Medium to Slightly	Fluorescence	
GI Report No. LGS5426568	1.61 CARAT	VS 1	63.4%	57%	Medium to Slightly	Fluorescence	
GI Report No. LGS5426568	1.61 CARAT	VS 1	63.4%	57%	Medium to Slightly	Fluorescence	

Comments: This Laboratory Grown Diamond was created by Chemical Vapor Deposition (CVD) growth process and may include post-growth treatment.