



LG455011436

LABORATORY GROWN DIAMOND REPORT

12/29/2020
IGI Report Number LG455011436
Shape and Cutting Style ROUND BRILLIANT
Measurements 6.64 - 6.66 x 4.01 mm

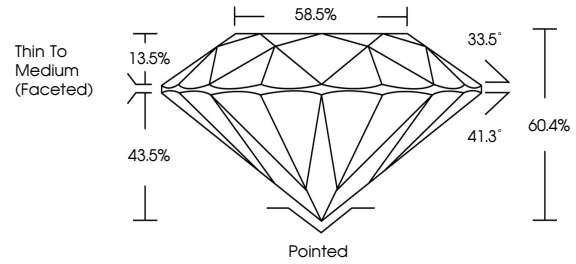
GRADING RESULTS
Carat Weight 1.07 CARAT
Color Grade H
Clarity Grade VS 1
Cut Grade IDEAL

ADDITIONAL GRADING INFORMATION
Polish EXCELLENT
Symmetry VERY GOOD
Fluorescence NONE
Inscription(s) LABGROWN IGI LG455011436

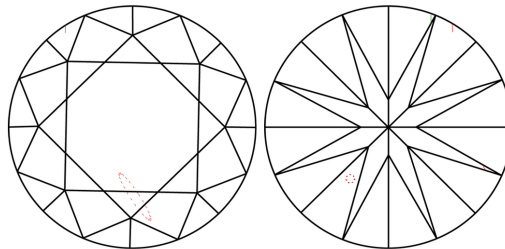
Comments: This Chemical Vapor Deposition (CVD) laboratory grown diamond is classified as Type IIa.



PROPORTIONS



CLARITY CHARACTERISTICS



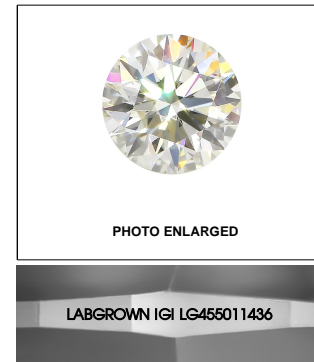
KEY TO SYMBOLS

Red symbols indicate internal characteristics.
Green symbols indicate external characteristics.

GRADING SCALES

Table with 5 columns: COLOR GRADING SCALE (CL, NC, FT, VLT, LT), CLARITY (10x) GRADING SCALE (FL, IF, VVS, VS, SI, I), and corresponding descriptions like 'COLORLESS D-F', 'NEAR COLORLESS G-J', etc.

The laboratory grown diamond described in this Report (Report) has been graded, tested, analyzed, examined and/or inscribed by International Gemological Institute (IGI). A laboratory grown diamond is one that has essentially the same chemical, physical and optical properties as a mined diamond...



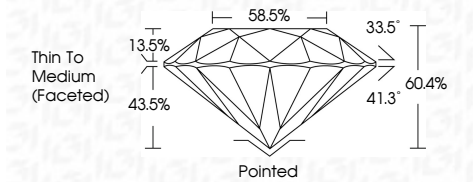
LASERSCRIBE SM



THIS DOCUMENT WAS PRODUCED WITH THE FOLLOWING SECURITY MEASURES: SPECIAL DOCUMENT PAPER, INK SCREENS, WATERMARK BACKGROUND DESIGNS, HOLOGRAM AND OTHER SECURITY FEATURES NOT LISTED AND DO EXCEED DOCUMENT SECURITY INDUSTRY GUIDELINES.

12/29/2020
IGI Report Number LG455011436
Shape and Cutting Style ROUND BRILLIANT
Measurements 6.64 - 6.66 x 4.01 mm

GRADING RESULTS
Carat Weight 1.07 CARAT
Color Grade H
Clarity Grade VS 1
Cut Grade IDEAL



ADDITIONAL GRADING INFORMATION
Polish EXCELLENT
Symmetry VERY GOOD
Fluorescence NONE
Inscription(s) LABGROWN IGI LG455011436

Comments: This Chemical Vapor Deposition (CVD) laboratory grown diamond is classified as Type IIa.



IGI

12/29/2020
IGI Report No LG455011436
ROUND BRILLIANT
Carat Weight 1.07 CARAT
Color Grade H
Clarity Grade VS 1
Cut Grade IDEAL
Depth 60.4%
Table 58.5%
Girdle Thin To Medium (Faceted)
Culet Pointed
Polish EXCELLENT
Symmetry VERY GOOD
Fluorescence NONE
Inscription(s) LABGROWN IGI LG455011436
Comments: This Chemical Vapor Deposition (CVD) laboratory grown diamond is classified as Type IIa.