



ELECTRONIC COPY

LABORATORY GROWN DIAMOND REPORT

August 11, 2022	
IGI Report Number	LG538290191
Description	LABORATORY GROWN DIAMOND
Shape and Cutting Style	PRINCESS CUT
Measurements	5.54 X 5.37 X 3.97 MM

GRADING RESULTS

Carat Weight	1.04 CARAT
Color Grade	F
Clarity Grade	VS 1

ADDITIONAL GRADING INFORMATION

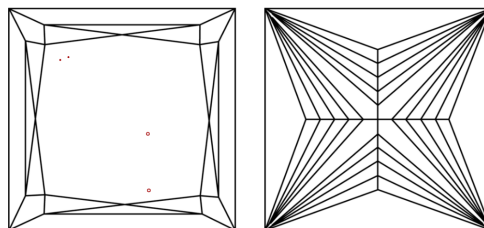
Polish	EXCELLENT
Symmetry	EXCELLENT
Fluorescence	NONE

Inscription(s) **LABGROWN IGI LG538290191**
 Comments: This Laboratory Grown Diamond was created by Chemical Vapor Deposition (CVD) growth process and may include post-growth treatment. Type IIa

Diagram of a hexagon with proportions:

- Top width: 70%
- Left side: 11.5%
- Left side: 59%
- Right side: 73.9%
- Bottom width: Pointed

CLARITY CHARACTERISTICS

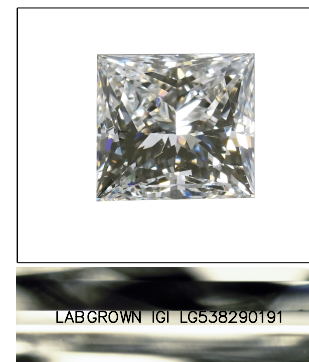


KEY TO SYMBOLS

Red symbols indicate internal characteristics.
Green symbols indicate external characteristics.

GRADING SCALES

COLOR GRADING SCALE	CL		NC	FT	VLT	LT
	COLORLESS D-F		NEAR COLORLESS G-J	FAINT K-M	VERY LIGHT N-R	LIGHT S-Z
CLARITY (10x) GRADING SCALE	FL	IF	VVS	VS	SI	I
	FLAWLESS INTERNALLY FLAWLESS		VERY VERY SLIGHTLY INCLUDED	VERY SLIGHTLY INCLUDED	SLIGHTLY INCLUDED	INCLUDED

LASERSCRIBESM

Sample Image Used



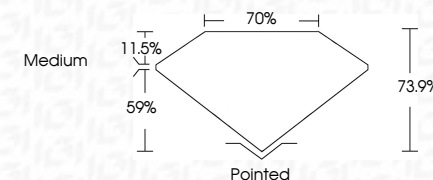
© IGI 2020, International Gemological Institute

FD - 10 20

www.igi.org

LABORATORY GROWN DIAMOND REPORT

August 11, 2022	
IGI Report Number	LG538290191
Description	LABORATORY GROWN DIAMOND
Shape and Cutting Style	PRINCESS CUT
Measurements	5.54 X 5.37 X 3.97 MM
GRADING RESULTS	
Carat Weight	1.04 CARAT
Color Grade	F
Clarity Grade	VS 1



ADDITIONAL GRADING INFORMATION

Polish	EXCELLENT
Symmetry	EXCELLENT
Fluorescence	NONE
Inscription(s)	LABGROWN IGI LG538290191

Comments: This Laboratory Grown Diamond was created by Chemical Vapor Deposition (CVD) growth process and may include post-growth treatment.
Type IIa



August 11, 2022
GJ Report No. 16538290191

Report ID: 123456789	1.04 CARAT
Color: D	VS1
Clarity: VVS2	73.9%
Cut: Excellent	70%
Shape: Round	Medium
Measurements: 8.5 x 8.5 mm	Polished
Weight: 1.04 carats	Excellent
Fluorescence: None	Excellent
Symmetry: Excellent	None
Table: 58%	Laboratory ID: GIA-123456789
Depth: 72%	Inscriptions: None
Girdle: Medium	
Corresponding Grade: VS1	
Color Grade: D	
Carat Weight: 1.04	
Color: D	
Clarity: VVS2	
Cut: Excellent	
Shape: Round	
Measurements: 8.5 x 8.5 mm	
Weight: 1.04 carats	
Fluorescence: None	
Symmetry: Excellent	
Table: 58%	
Depth: 72%	
Girdle: Medium	
Corresponding Grade: VS1	

This Laboratory Grown Diamond was created by Chemical Vapor Deposition (CVD) growth process and may include post-growth treatment.