



**ELECTRONIC COPY**

## LABORATORY GROWN DIAMOND REPORT

September 16, 2022	
IGI Report Number	LG530230387
Description	LABORATORY GROWN DIAMOND
Shape and Cutting Style	ROUND BRILLIANT
Measurements	7.51 - 7.55 X 4.51 MM

## GRADING RESULTS

Carat Weight	1.55 CARAT
Color Grade	G
Clarity Grade	VS 2
Cut Grade	IDEAL

### ADDITIONAL GRADING INFORMATION

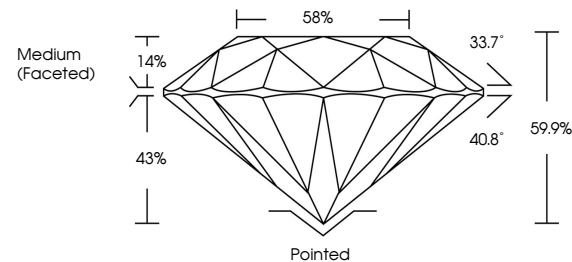
Polish	EXCELLENT
Symmetry	EXCELLENT
Fluorescence	NONE

Inscription(s) LABGROWN IGI LG530230387

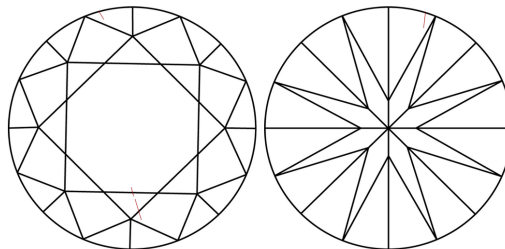
Comments: This Laboratory Grown Diamond was created by Chemical Vapor Deposition (CVD) growth process and may include post-growth treatment.  
Type IIa

LG530230387

## PROPORTIONS



## CLARITY CHARACTERISTICS

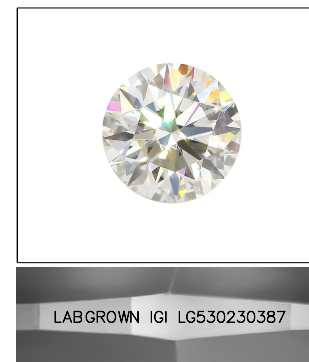


## KEY TO SYMBOLS

Red symbols indicate internal characteristics.  
Green symbols indicate external characteristics.

## GRADING SCALES

COLOR GRADING SCALE	CL		NC		FT		VLT		LT	
	COLORLESS D-F		NEAR COLORLESS G-J		FAINT K-M		VERY LIGHT N-R		LIGHT S-Z	
CLARITY (10x) GRADING SCALE	FL IF		VVS		VS		SI		I	
	FLAWLESS INTERNALLY FLAWLESS		VERY VERY SLIGHTLY INCLUDED		VERY SLIGHTLY INCLUDED		SLIGHTLY INCLUDED		INCLUDED	

LASERSCRIBE<sup>SM</sup>

Sample Image Used



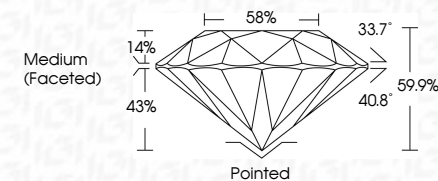
© IGI 2020, International Gemological Institute

FD - 10 20

LABORATORY GROWN DIAMOND REPORT

September 16, 2022	
IGI Report Number	LG530230387
Description	LABORATORY GROWN DIAMOND
Shape and Cutting Style	ROUND BRILLIANT
Measurements	7.51 - 7.55 X 4.51 MM

GRADING RESULTS	
Carat Weight	1.55 CARAT
Color Grade	G
Clarity Grade	VS 2
Cut Grade	IDEAL



### ADDITIONAL GRADING INFORMATION

Polish	EXCELLENT
Symmetry	EXCELLENT
Fluorescence	NONE
Inscription(s)	LABGROWN IGI LG530230387

Comments: This Laboratory Grown Diamond was created by Chemical Vapor Deposition (CVD) growth process and may include post-growth treatment.  
Type IIa



September 14, 2022	
GI Report No. LG53020387	
<b>ROUND BRILLIANT</b>	
<b>1.55 CARAT</b>	
<b>G</b>	
<b>V5 2</b>	
<b>ID54L</b>	
<b>56%</b>	
<b>Medium (Faceted)</b>	
<b>Polished</b>	
<b>EXCELLENT</b>	
<b>EXCELLENT</b>	
<b>NONE</b>	
<b>LAGESQWJN LG1</b>	
<b>LG53020387</b>	
<b>Comments:</b>	
The Laboratory Found Diamond was	
Created by Chemical Vapor Deposition	
(CVD) and may include	
post-growth treatment.	
Type Ila	

This Laboratory Grown Diamond was created by Chemical Vapor Deposition (CVD) growth process and may include post-growth treatment.