



ELECTRONIC COPY

LABORATORY GROWN DIAMOND REPORT

November 7, 2022
IGI Report Number LG547251028
Description LABORATORY GROWN DIAMOND
Shape and Cutting Style PRINCESS CUT
Measurements 6.48 X 6.29 X 4.36 MM

GRADING RESULTS

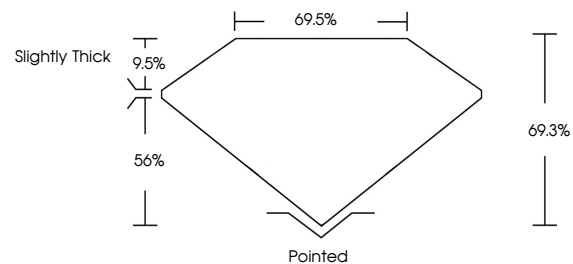
Carat Weight 1.54 CARAT
Color Grade D
Clarity Grade VVS 2

ADDITIONAL GRADING INFORMATION

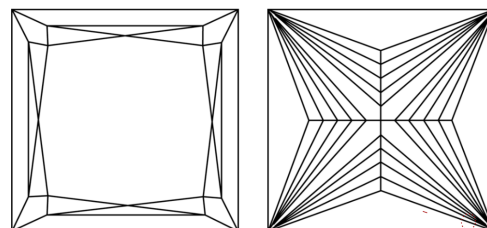
Polish EXCELLENT
Symmetry EXCELLENT
Fluorescence NONE
Inscription(s) LABGROWN IGI LG547251028
Comments: This Laboratory Grown Diamond was created by Chemical Vapor Deposition (CVD) growth process and may include post-growth treatment. Type IIa

LG547251028

PROPORTIONS



CLARITY CHARACTERISTICS

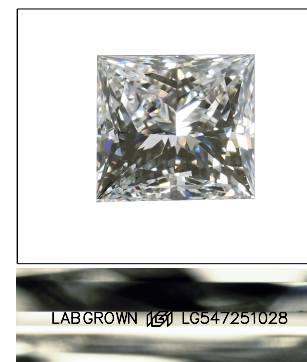


KEY TO SYMBOLS

Red symbols indicate internal characteristics.
Green symbols indicate external characteristics.

GRADING SCALES

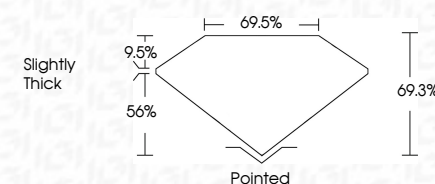
Table with 2 rows: COLOR GRADING SCALE (CL, NC, FT, VLT, LT) and CLARITY (10x) GRADING SCALE (FL, IF, VVS, VS, SI, I).



LASERSCRIBE SM

Sample Image Used

November 7, 2022
IGI Report Number LG547251028
Description LABORATORY GROWN DIAMOND
Shape and Cutting Style PRINCESS CUT
Measurements 6.48 X 6.29 X 4.36 MM
GRADING RESULTS
Carat Weight 1.54 CARAT
Color Grade D
Clarity Grade VVS 2



ADDITIONAL GRADING INFORMATION

Polish EXCELLENT
Symmetry EXCELLENT
Fluorescence NONE
Inscription(s) LABGROWN IGI LG547251028
Comments: This Laboratory Grown Diamond was created by Chemical Vapor Deposition (CVD) growth process and may include post-growth treatment. Type IIa



IGI



Summary table of diamond details: November 7, 2022, IGI Report No. LG547251028, PRINCESS CUT, 6.48 X 6.29 X 4.36 MM, 1.54 CARAT, D, VVS 2, 69.5%, 69.5%, Slightly Thick, Pointed, EXCELLENT, EXCELLENT, NONE, LABGROWN IGI LG547251028.

The Laboratory Grown Diamond was created by Chemical Vapor Deposition (CVD) growth process and may include post-growth treatment. Type IIa