



ELECTRONIC COPY

LABORATORY GROWN DIAMOND REPORT

August 30, 2022	
IGI Report Number	LG544277661
Description	LABORATORY GROWN DIAMOND
Shape and Cutting Style	ROUND BRILLIANT
Measurements	8.78 - 8.83 X 5.49 MM

GRADING RESULTS

Carat Weight	2.63 CARATS
Color Grade	G
Clarity Grade	SI 1
Cut Grade	IDEAL

ADDITIONAL GRADING INFORMATION

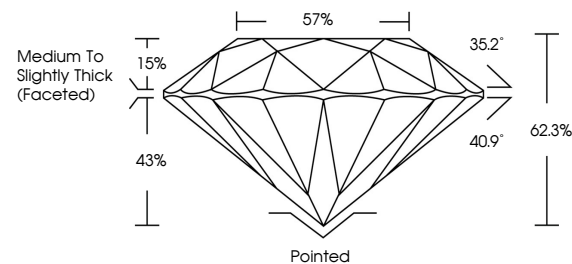
Polish	EXCELLENT
Symmetry	EXCELLENT
Fluorescence	NONE

Inscription(s) LABGROWN | G | LG544277661

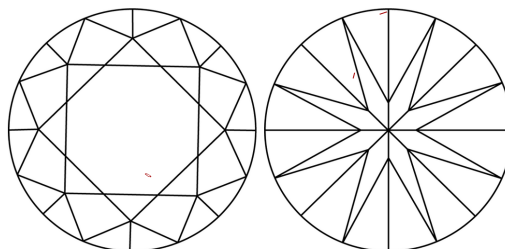
Comments: This Laboratory Grown Diamond was created by Chemical Vapor Deposition (CVD) growth process and may include post-growth treatment.
Type IIa

LG544277661

PROPORTIONS



CLARITY CHARACTERISTICS

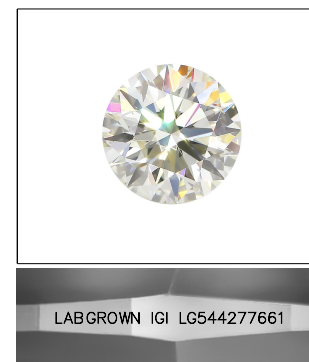


KEY TO SYMBOLS

Red symbols indicate internal characteristics.
Green symbols indicate external characteristics.

GRADING SCALES

COLOR GRADING SCALE	CL		NC		FT		VLT		LT	
	COLORLESS D-F		NEAR COLORLESS G-J		FAINT K-M		VERY LIGHT N-R		LIGHT S-Z	
CLARITY (10x) GRADING SCALE	FL	IF	VVS		VS		SI		I	
	FLAWLESS INTERNALLY FLAWLESS		VERY VERY SLIGHTLY INCLUDED		VERY SLIGHTLY INCLUDED		SLIGHTLY INCLUDED		INCLUDED	

LASERSCRIBESM

Sample Image Used



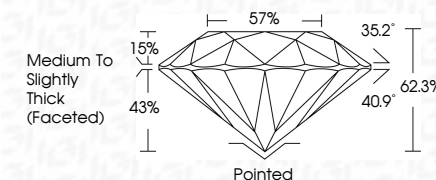
© IGI 2020, International Gemological Institute

FD - 10 20

www.igi.org

LABORATORY GROWN DIAMOND REPORT

August 30, 2022	
IGI Report Number	LG544277661
Description	LABORATORY GROWN DIAMOND
Shape and Cutting Style	ROUND BRILLIANT
Measurements	8.78 - 8.83 X 5.49 MM
GRADING RESULTS	
Carat Weight	2.63 CARATS
Color Grade	G
Clarity Grade	SI 1
Cut Grade	IDEAL



ADDITIONAL GRADING INFORMATION

Polish	EXCELLENT
Symmetry	EXCELLENT
Fluorescence	NONE
Inscription(s)	LABGROWN IGI LG544277661

Inscription(s) LABGROWN IGI LG544277661

Comments: This Laboratory Grown Diamond was created by Chemical Vapor Deposition (CVD) growth process and may include post-growth treatment.
Type IIa



August 30, 2022	GI Report No. LG5427761	2.63 CARATS	G	S I 1	Painted	None	LABGROWN 101	This Laboratory Grown Diamond was created by Chemical Vapor Deposition (CVD) growth process and may include additional treatments. Type Ila.
GI Brilliant	ROUND			IDEAL	EXCELLENT	EXCELLENT	LG5427761	
Wt 0.78 - 0.83 X 6.0 MM				62.3%	57%			
Carat Weight				Medium to Slightly Thick (faceted)				
Color Grade								
				Clarity Grade				
				Car Grade				
				Depth				
				Table				
				Girdle				
				Culet				
				Polish				
				Symmetry				
				Fluorescence				
				Inscriptions				
				Comments:				