



06/24/2021	
IGI Report Number	LG480173074
Shape and Cutting Style	ROUND BRILLIANT
Measurements	7.61 - 7.64 x 4.81 mm
GRADING RESULTS	
Carat Weight	1.76 CARAT
Color Grade	E
Clarity Grade	VS 2
Cut Grade	EXCELLENT
ADDITIONAL GRADING INFORMATION	
Polish	EXCELLENT
Symmetry	EXCELLENT
Fluorescence	NONE
Inscription(s)	LABGROWN IGI LG480173074

Comments: This Laboratory Grown Diamond was created by Chemical Vapor Deposition (CVD) growth process and may include post-growth treatment.
Type IIa

LG480173074

Medium To Slightly Thick (Faceted)

60%

14.5%

36.4°

44%

41.3°

63%

Pointed

Red symbols indicate internal characteristics.
Green symbols indicate external characteristics.

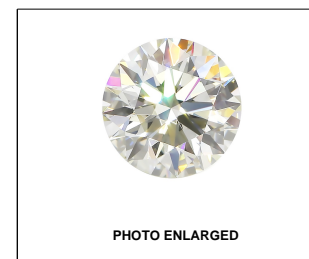
LABORATORY GROWN DIAMOND REPORT

COLOR GRADING SCALE	CL		NC		FT		VLT		LT	
	COLORLESS D-F		NEAR COLORLESS G-J		FAINT K-M		VERY LIGHT N-R		LIGHT S-Z	
CLARITY (10x) GRADING SCALE	FL IF		VVS		VS		SI		I	
	FLAWLESS INTERNALLY		VERY VERY SLIGHTLY INCLUDED		VERY SLIGHTLY INCLUDED		SLIGHTLY INCLUDED		INCLUDED	

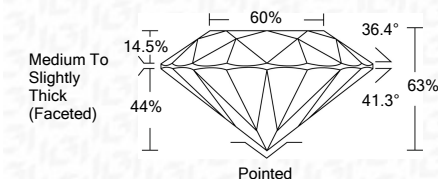
The laboratory growdiamond described in this Report (Report) has been graded, tested, analyzed, examined and/or inscribed by International Gemological Institute (I.G.I.). A laboratory grown diamond is one that has essentially the same chemical, physical and optical properties as a naturally occurring diamond. The production of a grown diamond is a manufacturing process. I.G.I. employs and utilizes those techniques and equipment currently available to I.G.I., including, without limitation, 10X magnification, corrected triplet loupe, binocular microscope, master color comparison stones, non-contact optical spectrometer, and/or other instruments and/or processes as deemed appropriate by I.G.I. This Report includes advanced security features. A duly accredited gemologist or jeweler can advise you with respect to the importance of and interrelationship between cut, color, clarity and carat weight.

THIS REPORT IS NEITHER A GUARANTEE, VALUATION, NOR APPRAISAL OF THE GEMSTONE DESCRIBED HEREIN. PLEASE REVIEW THE LIMITATIONS AND RESTRICTIONS SET FORTH ONLINE. FOR MORE INFORMATION, PLEASE VISIT WWW.IGI.ORG OR CALL 1-888-BUY-IGI.

© INTERNATIONAL GEMOLOGICAL INSTITUTE, INC.



LABGROWN IGI LG480173074

LASERSCRIBESM

ADDITIONAL GRADING INFORMATION

Polish	EXCELLENT
Symmetry	EXCELLENT
Fluorescence	NONE
Inscription(s)	LABGROWN IGI LG480173074

Comments: This Laboratory Grown Diamond was created by Chemical Vapor Deposition (CVD) growth process and may include post-growth treatment.
Type IIa



© IGI 2020, International Gemological Institute

FD - 10 20



THIS DOCUMENT WAS PRODUCED WITH THE FOLLOWING SECURITY MEASURES: SPECIAL DOCUMENT PAPER, INK SCREENS, WATERMARK, BACKGROUND DESIGNS, HOLOGRAM AND OTHER SECURITY FEATURES NOT LISTED AND DO EXCEED DOCUMENT SECURITY INDUSTRY GUIDELINES

www.igi.org

06/24/2021

06/24/2021
IGI Report No LG480173074

ROUND BRILLIANT
7.61 - 7.64 x 4.81 mm

7.61 - 7.64 x 4.81 mm	1.76 CARAT	E
Carat Weight		
Color Grade		

	E	VS 2
Color Grade		
Clarity Grade		

Clarity Grade	VS 2
Cut Grade	EXCELLENT

Cut Grade	EXCELLENT
Depth	63%

Depth	63%
Table	60%
Girdle	Medium To Slightly Thick

Girdle

	Culet	Pointed (Faceted)
1		
2		
3		
4		
5		
6		
7		
8		
9		
10		
11		
12		
13		
14		
15		
16		
17		
18		
19		
20		
21		
22		
23		
24		
25		
26		
27		
28		
29		
30		
31		
32		
33		
34		
35		
36		
37		
38		
39		
40		
41		
42		
43		
44		
45		
46		
47		
48		
49		
50		
51		
52		
53		
54		
55		
56		
57		
58		
59		
60		
61		
62		
63		
64		
65		
66		
67		
68		
69		
70		
71		
72		
73		
74		
75		
76		
77		
78		
79		
80		
81		
82		
83		
84		
85		
86		
87		
88		
89		
90		
91		
92		
93		
94		
95		
96		
97		
98		
99		
100		

Pointed	Pointed
Culet	
Polish	
Symmetry	
EXCELLENT	
EXCELLENT	

	EXCELLENT	NONE
Symmetry		
Fluorescence		

Fluorescence	NONE
Inscription(s)	LABGROWN IGI LG480173074

Comments:
This Laboratory Grown Diamond was

This Laboratory Grown Diamond was created by Chemical Vapor Deposition (CVD) growth process and may include

**Created by American Veterinary Association
(CVD) growth process and may include
post-growth treatment.
Type Ila**

Type IIa