



**ELECTRONIC COPY**

## LABORATORY GROWN DIAMOND REPORT

July 27, 2022

IGI Report Number **LG539216514**

Description

LABORATORY GROWN  
DIAMOND

Shape and Cutting Style **OVAL BRILLIANT**

Measurements 8.26 X 5.64 X 3.58 MM

## GRADING RESULTS

Carat Weight 1.03 CARAT

Color Grade G

Clarity Grade VS 1

### ADDITIONAL GRADING INFORMATION

Polish EXCELLENT

Symmetry **EXCELLENT**

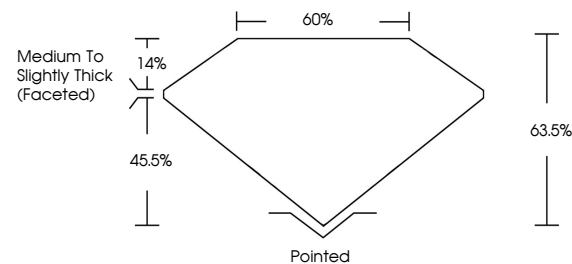
Fluorescence **NONE**

Inscription(s) LABGROWN IGI LG539216514

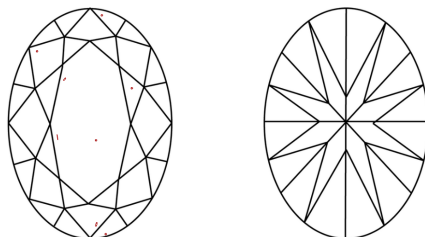
Comments: This Laboratory Grown Diamond was created by Chemical Vapor Deposition (CVD) growth process and may include post-growth treatment.  
Type IIa

LG539216514

## PROPORTIONS



## CLARITY CHARACTERISTICS

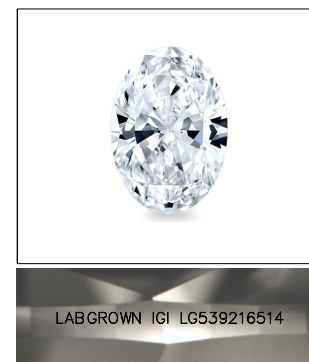


### KEY TO SYMBOLS

Red symbols indicate internal characteristics.  
Green symbols indicate external characteristics.

## GRADING SCALES

COLOR GRADING SCALE	CL		NC	FT	VL	LT
	COLORLESS D-F		NEAR COLORLESS G-J	FAINT K-M	VERY LIGHT N-R	LIGHT S-Z
CLARITY (10x) GRADING SCALE	FL	IF	VVS	VS	SI	I
	FLAWLESS INTERNALLY FLAWLESS		VERY VERY SLIGHTLY INCLUDED	VERY SLIGHTLY INCLUDED	SLIGHTLY INCLUDED	INCLUDED

LASERSCRIBE<sup>SM</sup>

Sample Image Used



© IGI 2020, International Gemological Institute

FD - 10 20

LABORATORY GROWN DIAMOND REPORT

July 27, 2022	
IGI Report Number	LG539216514
Description	LABORATORY GROWN

Shape and Cutting Style **OVAL BRILLIANT**

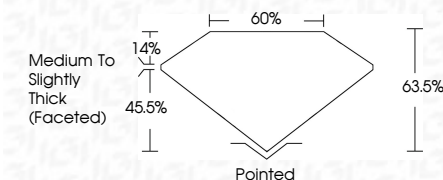
Measurements **8.26 X 5.64 X 3.58 MM**

## GRADING RESULTS

Carat Weight **1.03 CARAT**

Color Grade G

Clarity Grade VS 1



### ADDITIONAL GRADING INFORMATION

Polish **EXCELLENT**Symmetry **EXCELLENT**Fluorescence **NONE**

Inscription(s) LABGROWN IGI LG539216514

Comments: This Laboratory Grown Diamond was created by Chemical Vapor Deposition (CVD) growth process and may include post-growth treatment.  
Type IIa



July 27, 2022	
G Report No. LG59216514	
CVD BRILLIANT	
1.02 x 2.8 x 5.6 x 3.58 MM	
Color Weight	VS 1
Carat Grade	63.5%
	60%
	Medium To Slightly Thick (6-6.5mm)
Clarity	Poished
Symmetry	EXCELLENT
Fluorescence	EXCELLENT
Inscriptions(3)	NONE
Comments:	LABGROWN (SI) LG59216514
This Laboratory Grown Diamond was grown using CVD growth process and may include post-growth treatment.	
Type IIA	